

## NUT RABBIT PAB

货号: N225225

产品全名: NUT 兔多抗

基因符号 Protein NUT (Nuclear protein in Tis)

**UNIPROT ID:** Q86Y26

背景: Plays a role in the regulation of proliferation.

抗原: Synthesized peptide derived from human NUT. at AA range: 1082-1131

经过测试的应用: WB,ELISA

推荐稀释比: WB: 1/500-1/1000 ELISA: 1/10000

种属反应性: Rabbit

克隆性: Rabbit Polyclonal

分子量: Calculated MW: 120 kDa; Observed MW: 63 kDa

亚型: IgG

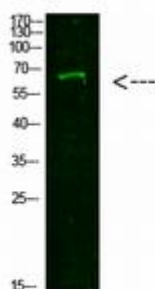
纯化: Affinity Purified

种属反应性: Human

成分: PBS (without Mg<sup>2+</sup> and Ca<sup>2+</sup>), pH 7.3 containing 50% glycerol, 0.5% BSA and 0.02% sodium azide

研究领域: Cancer

储存和运输: Store at -20°C. Avoid repeated freezing and thawing



Western blot analysis of NUT in 293T lysates using NUT antibody.