

NUP62CL RABBIT MAB

货号: N263138

产品全名: NUP62CL 兔单克隆抗体

基因符号 NUP62L; Nucleoporin-62 C-terminal-like 蛋白

UNIPROT ID: Q9H1M0

背景: This gene encodes a protein containing a domain found in nucleoporins which are glycoproteins found in nuclear pore complexes. Alternative splicing results in multiple transcript variants.

抗原: A synthetic peptide of human NUP62CL

经过测试的应用: WB,IP

推荐稀释比: WB: 1/500-1/1000 IP: 1/20

种属反应性: Rabbit

克隆性: Rabbit Monoclonal

克隆编号: R08-1A5

分子量: Calculated MW: 21 kDa; Observed MW: 21 kDa

亚型: IgG

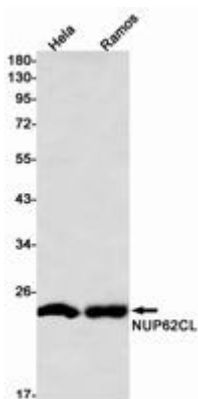
纯化: Affinity Purified

种属反应性: Human

成分: PBS (without Mg²⁺ and Ca²⁺), pH 7.3 containing 50% glycerol, 0.5% BSA and 0.02% sodium azide

研究领域: -

储存和运输: Store at -20°C. Avoid repeated freezing and thawing



Western blot analysis of NUP62CL in HeLa, Ramos lysates using NUP62CL antibody.