

## NUP62 RABBIT PAB

货号: S217657

产品全名: NUP62 兔多抗

基因符号: p62; IBSN; SNDI

**UNIPROT ID:** P37198 (Gene Accession - BC050717)

**背景:** The nuclear pore complex is a massive structure that extends across the nuclear envelope, forming a gateway that regulates the flow of macromolecules between the nucleus and the cytoplasm. Nucleoporins are the main components of the nuclear pore complex in eukaryotic cells. The protein encoded by this gene is a member of the FG-repeat containing nucleoporins and is localized to the nuclear pore central plug. This protein associates with the importin alpha/beta complex which is involved in the import of proteins containing nuclear localization signals. Multiple transcript variants of this gene encode a single protein isoform.

**抗原:** Fusion protein of human NUP62

**经过测试的应用:** ELISA, WB, IHC

**推荐稀释比:** IHC: 50-200; WB: 500-2000; ELISA: 2000-5000

**种属反应性:** Rabbit

**克隆性:** Rabbit Polyclonal

**亚型:** Immunogen-specific rabbit IgG

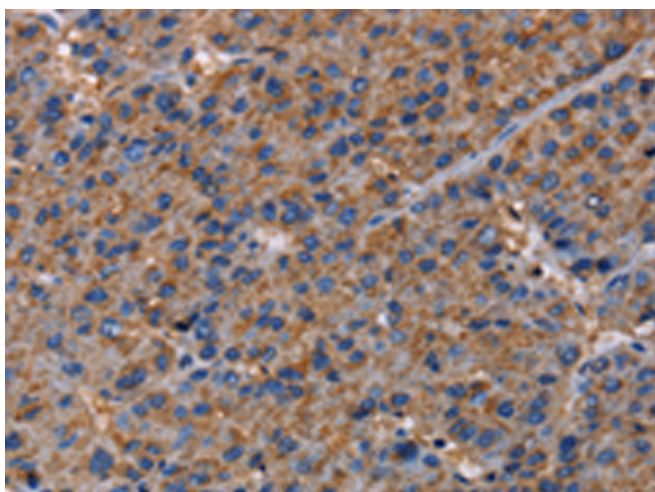
**纯化:** Antigen affinity purification

**种属反应性:** Human, Mouse, Rat

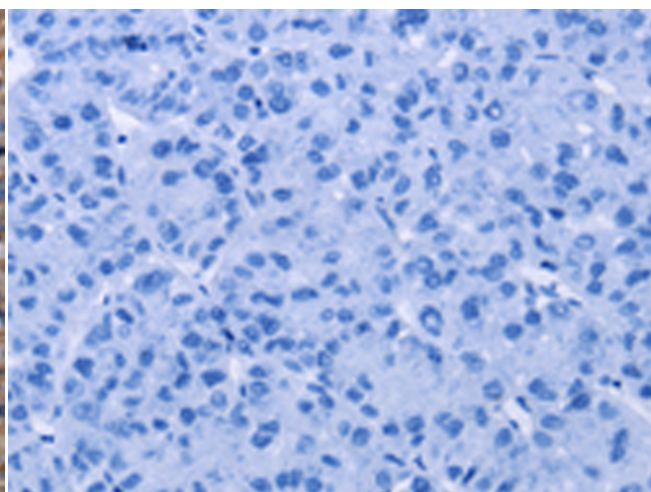
**成分:** PBS (without Mg<sup>2+</sup> and Ca<sup>2+</sup>), pH 7.4, 150 mM NaCl, 0.05% Sodium Azide and 40% glycerol

**研究领域:** Signal Transduction, Epigenetics and Nuclear Signaling, Cancer

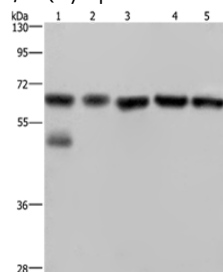
**储存和运输:** Store at -20°C. Avoid repeated freezing and thawing



Immunohistochemistry analysis of paraffin embedded Human liver cancer tissue using 217657 (NUP62 Antibody) at a dilution of 1/40 (Cytoplasm or Nucleus).



In comparison with the IHC on the left, the same paraffin-embedded Human liver cancer tissue is first treated with the fusion protein and then with 217657 (Anti-NUP62 Antibody) at dilution 1/40.



Gel: 8% SDS-PAGE, Lysate: 40 µg;

Lane 1-5: Jurkat cells, human brain malignant glioma tissue, PC3 cells, K562 cells, A549 cells;

Primary antibody: 217657 (NUP62 Antibody) at dilution 1/300;

Secondary antibody: Goat anti rabbit IgG at 1/8000 dilution;

Exposure time: 5 seconds