

NTPCR RABBIT PAB

货号: S215412

产品全名: NTPCR 兔多抗

基因符号 THEP1; Clorf57; HCR-NTPase

UNIPROT ID: Q9BSD7 (Gene Accession - NP_115700)

背景: The protein encoded by this gene is a non-specific nucleoside triphosphatase that is slow-acting in vitro. This gene is overexpressed in many tumor tissues, and while it is not essential for the cell, overexpression is cytotoxic. However, the cytotoxicity is not related to its triphosphatase activity. [provided by RefSeq, Jul 2016]

抗原: Synthetic peptide of human NTPCR

经过测试的应用: ELISA, IHC

推荐稀释比: IHC: 50-100; ELISA: 5000-10000

种属反应性: Rabbit

克隆性: Rabbit Polyclonal

亚型: Immunogen-specific rabbit IgG

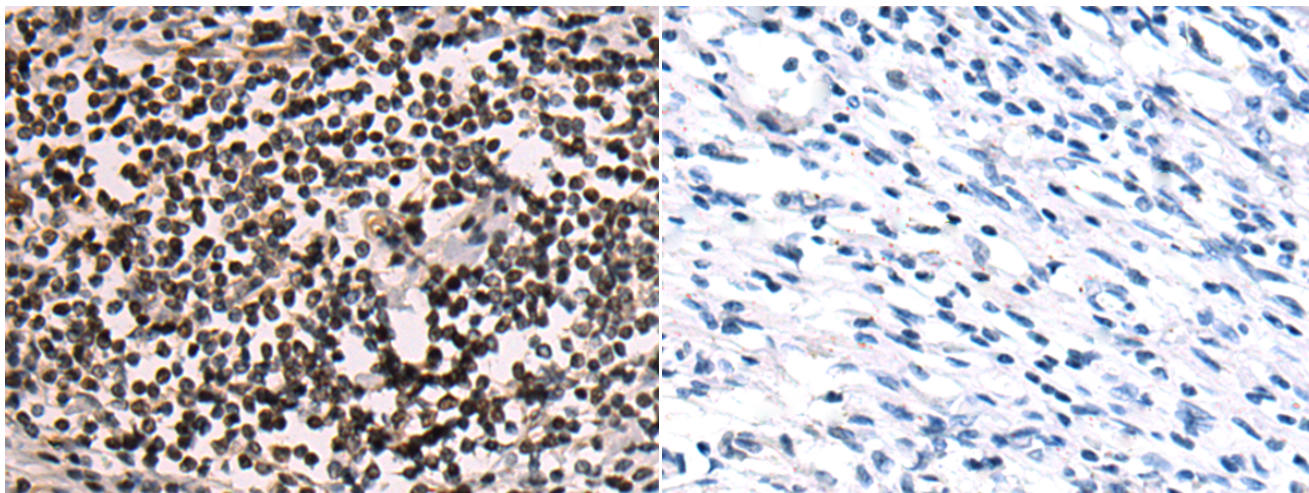
纯化: Antigen affinity purification

种属反应性: Human, Mouse

成分: PBS (without Mg²⁺ and Ca²⁺), pH 7.4, 150 mM NaCl, 0.05% Sodium Azide and 40% glycerol

研究领域: Cell Biology

储存和运输: Store at -20°C. Avoid repeated freezing and thawing



Immunohistochemistry analysis of paraffin embedded Human colorectal cancer tissue using 215412(NTPCR Antibody) at a dilution of 1/45(Nucleus). In comparison with the IHC on the left, the same paraffin-embedded Human colorectal cancer tissue is first treated with the synthetic peptide and then with 215412(Anti-NTPCR Antibody) at dilution 1/45.