

## NSE RABBIT PAB

货号: N226044

产品全名: NSE 兔多抗

基因符号 ENO2; Gamma-enolase; 2-phospho-D-glycerate hydro-lyase; Enolase 2; Neural enolase; Neuron-specific enolase; NSE

**UNIPROT ID:** P09104

**背景:** ENO2 an enzyme with 2-phospho-D-glycerate hydro-lyase activity. One of the three enolase isoenzymes found in mammals. This isoenzyme, a homodimer, is found in mature neurons and cells of neuronal origin. A switch from alpha enolase to gamma enolase occurs in neural tissue during development in rats and primates.

**抗原:** A synthetic peptide of human NSE

**经过测试的应用:** WB,IHC-F,IHC-P,ICC/IF,FC

**推荐稀释比:** WB: 1/500-1/1000 IHC: 1/50-1/100 IF: 1/50-1/200 FC: 1/50-1/100

**种属反应性:** Rabbit

**克隆性:** Rabbit Polyclonal

**分子量:** Calculated MW: 47 kDa; Observed MW: 47 kDa

**亚型:** IgG

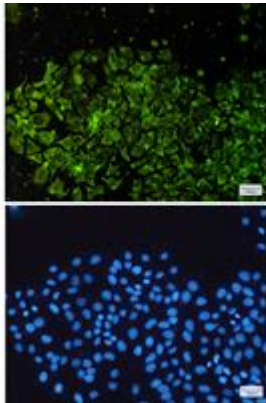
**纯化:** Affinity Purified

**种属反应性:** Human, Mouse and Rat

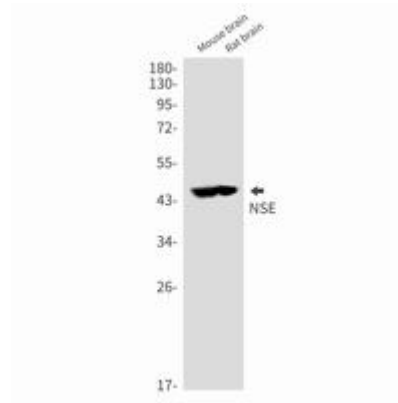
**成分:** PBS (without Mg<sup>2+</sup> and Ca<sup>2+</sup>), pH 7.3 containing 50% glycerol, 0.5% BSA and 0.02% sodium azide

**研究领域:** Signal Transduction

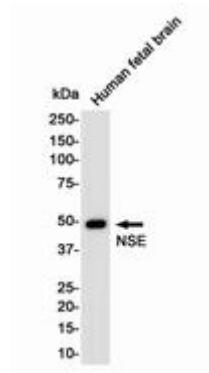
**储存和运输:** Store at -20°C. Avoid repeated freezing and thawing



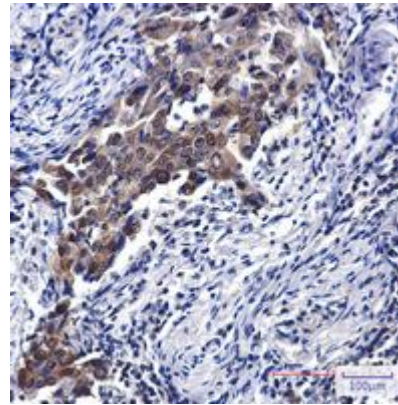
Immunocytochemistry analysis of NSE (green) in Hela using NSE antibody, and DAPI (blue)



Western blot analysis of NSE in mouse brain, rat brain lysates using NSE antibody.



Western blot analysis of Enolase2/NSE in Human Fetal Brain lysates using Enolase2/NSE antibody.



Immunohistochemistry analysis of paraffin-embedded Human lung cancer using NSE antibody. High-pressure and temperature Sodium Citrate pH 6.0 was used for antigen retrieval.