

NSE (4C7) MOUSE MAB

货号: N261224

产品全名: NSE (4C7) 小鼠单抗

基因符号 ENO2; Gamma-enolase; 2-phospho-D-glycerate hydro-lyase; Enolase 2; Neural enolase; Neuron-specific enolase; NSE

UNIPROT ID: P09104

背景: ENO2 an enzyme with 2-phospho-D-glycerate hydro-lyase activity. One of the three enolase isoenzymes found in mammals. This isoenzyme, a homodimer, is found in mature neurons and cells of neuronal origin. A switch from alpha enolase to gamma enolase occurs in neural tissue during development in rats and primates.

抗原: Synthetic Peptide of NSE

经过测试的应用: WB,IHC-F,IHC-P,ICC/IF

推荐稀释比: WB: 1/500-1/1000 IHC: 1/50-1/100 IF: 1/50-1/200

种属反应性: Mouse

克隆性: Mouse Monoclonal

克隆编号: 4C7-4F10-10F9

分子量: Calculated MW: 47 kDa; Observed MW: 47 kDa

亚型: IgG1

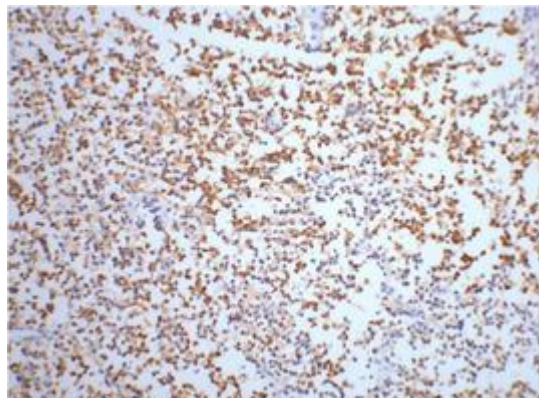
纯化: Affinity Purified

种属反应性: Human, Mouse and Rat

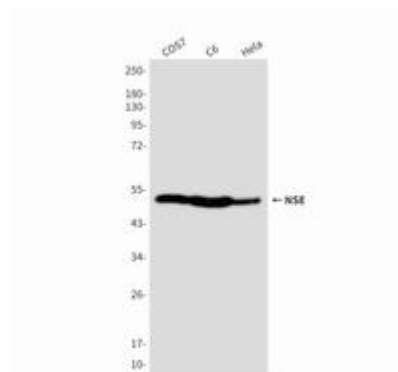
成分: PBS (without Mg²⁺ and Ca²⁺), pH 7.3 containing 50% glycerol, 0.5% BSA and 0.02% sodium azide

研究领域: Signal Transduction

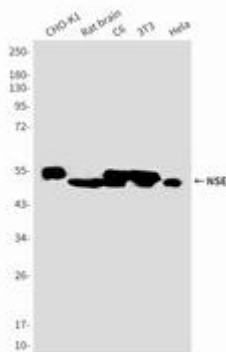
储存和运输: Store at -20°C. Avoid repeated freezing and thawing



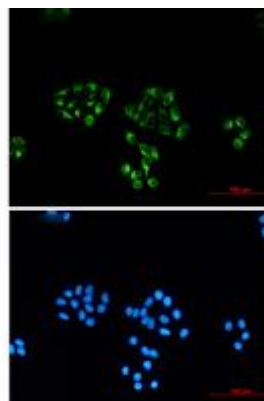
Immunohistochemistry analysis of paraffin-embedded Human small cell carcinoma of lung tissue using NSE antibody. High-pressure and temperature Sodium Citrate pH 6.0 was used for antigen retrieval.



Western blot analysis of Enolase2 in COS7, C6 and Hela lysates using Enolase2 antibody.



Western blot analysis of NSE (4C7) in Enolase (4C7) in CHO-K1, rat brain, C6, 3T3, Hela lysates using Enolase (4C7) antibody.



Immunocytochemistry analysis of NSE (4C7) (green) in Hela using NSE (4C7) antibody, and DAPI (blue)