

## NSE (1H8) MOUSE MAB

货号: N261462

产品全名: NSE (1H8) 小鼠单抗

基因符号 ENO2; Gamma-enolase; 2-phospho-D-glycerate hydro-lyase; Enolase 2; Neural enolase; Neuron-specific enolase; NSE

**UNIPROT ID:** P09104

**背景:** ENO2 an enzyme with 2-phospho-D-glycerate hydro-lyase activity. One of the three enolase isoenzymes found in mammals. This isoenzyme, a homodimer, is found in mature neurons and cells of neuronal origin. A switch from alpha enolase to gamma enolase occurs in neural tissue during development in rats and primates.

**抗原:** Synthetic peptide derived from human NSE.

**经过测试的应用:** WB,ELISA

**推荐稀释比:** WB: 1/500-1/1000 ELISA: 1/10000

**种属反应性:** Mouse

**克隆性:** Mouse Monoclonal

**克隆编号:** 1H8-B4

**分子量:** Calculated MW: 47 kDa; Observed MW: 47 kDa

**亚型:** IgG1

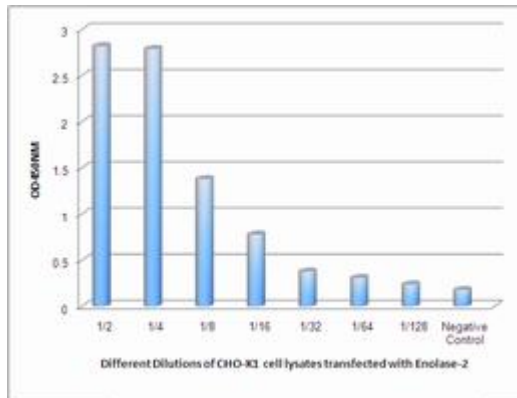
**纯化:** Affinity Purified

**种属反应性:** Human, Mouse and Rat

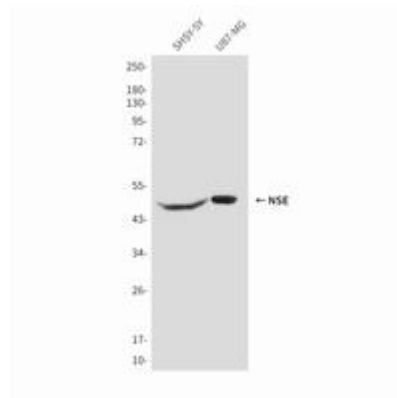
**成分:** PBS (without Mg<sup>2+</sup> and Ca<sup>2+</sup>), pH 7.3 containing 50% glycerol, 0.5% BSA and 0.02% sodium azide

**研究领域:** Signal Transduction

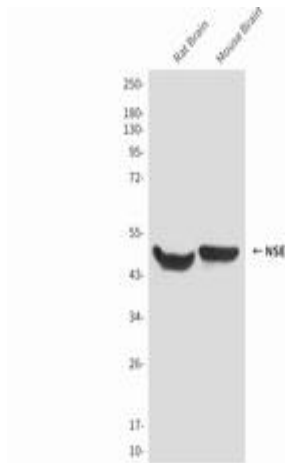
**储存和运输:** Store at -20°C. Avoid repeated freezing and thawing



Observed Enolase2 levels in CHO-K1 cell lysates transfected with Enolase2 at different dilution.



Western blot analysis of Enolase2 in SH-SY5Y and U87-MG lysates using Enolase2 antibody.



Western blot analysis of NSE (1H8) in rat Brain and mouse Brain lysates using Enolase2 antibody.