

NSE (1G7) MOUSE MAB

货号: N261461

产品全名: NSE (1G7) 小鼠单抗

基因符号 ENO2; Gamma-enolase; 2-phospho-D-glycerate hydro-lyase; Enolase 2; Neural enolase; Neuron-specific enolase; NSE

UNIPROT ID: P09104

背景: ENO2 an enzyme with 2-phospho-D-glycerate hydro-lyase activity. One of the three enolase isoenzymes found in mammals. This isoenzyme, a homodimer, is found in mature neurons and cells of neuronal origin. A switch from alpha enolase to gamma enolase occurs in neural tissue during development in rats and primates.

抗原: Synthetic peptide derived from human NSE.

经过测试的应用: WB,ELISA

推荐稀释比: WB: 1/500-1/1000 ELISA: 1/10000

种属反应性: Mouse

克隆性: Mouse Monoclonal

克隆编号: 1G7-B4

分子量: Calculated MW: 47 kDa; Observed MW: 47 kDa

亚型: IgG1

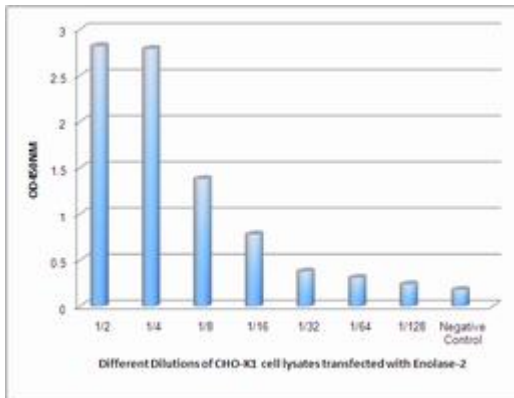
纯化: Affinity Purified

种属反应性: Human, Mouse and Rat

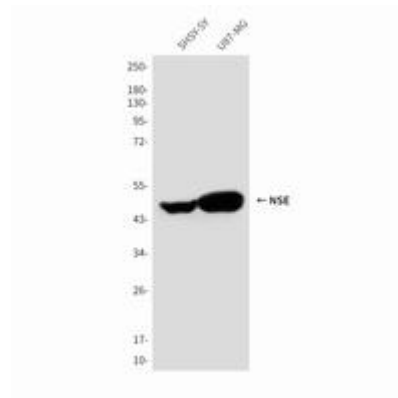
成分: PBS (without Mg²⁺ and Ca²⁺), pH 7.3 containing 50% glycerol, 0.5% BSA and 0.02% sodium azide

研究领域: Signal Transduction

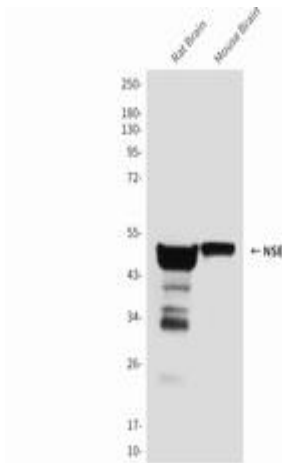
储存和运输: Store at -20°C. Avoid repeated freezing and thawing



Observed Enolase2 levels in CHO-K1 cell lysates transfected with Enolase2 at different dilution.



Western blot analysis of Enolase2 in SH-SY5Y and U87-MG lysates using Enolase2 antibody.



Western blot analysis of NSE (1G7) in rat Brain and mouse Brain lysates using Enolase2 antibody.