

NRF1 RABBIT PAB

货号: N225916

产品全名: Nrf1 兔多抗

基因符号 alpha pal; alpha palindromic binding protein; Alpha palindromic-binding protein; Alpha-pal; locus control region factor 1; NFE2 related factor 1; NRF-1; Nrf1; NRF1_HUMAN; Nuclear respiratory factor 1; transcription factor 1l.

UNIPROT ID: Q16656

背景: Transcription factor that activates the expression of the EIF2S1 (EIF2-alpha) gene. Links the transcriptional modulation of key metabolic genes to cellular growth and development. Implicated in the control of nuclear genes required for respiration, heme biosynthesis, and mitochondrial DNA transcription and replication.

抗原: A synthesized peptide derived from human NRF1

经过测试的应用: WB,IHC-P,ICC/IF,IP,FC

推荐稀释比: WB: 1/500-1/1000 IHC: 1/50-1/100 IF: 1/50-1/200 IP: 1/20 FC: 1/50-1/100

种属反应性: Rabbit

克隆性: Rabbit Polyclonal

分子量: Calculated MW: 54 kDa; Observed MW: 68 kDa

亚型: IgG

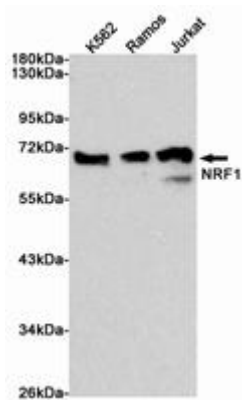
纯化: Affinity Chromatography

种属反应性: Human, Mouse and Rat

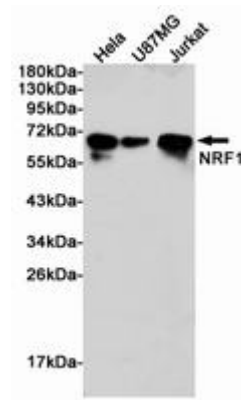
成分: PBS (without Mg²⁺ and Ca²⁺), pH 7.3 containing 50% glycerol, 0.5% BSA and 0.02% sodium azide

研究领域: Epigenetics and Nuclear Signaling

储存和运输: Store at -20°C. Avoid repeated freezing and thawing



Western blot analysis of Nrf1 in K562, Ramos and Jurkat lysates using NRF1 antibody.



Western blot analysis of Nrf1 in HeLa, U87-MG and Jurkat lysates using Nrf1 antibody.