

NRF1 RABBIT MAB

货号: N262623

产品全名: Nrf1 兔单克隆抗体

基因符号 alpha pal; alpha palindromic binding protein; Alpha palindromic-binding protein; Alpha-pal; locus control region factor 1; NFE2 related factor 1; NRF-1; Nrf1; NRF1_HUMAN; Nuclear respiratory factor 1; transcription factor 1l.

UNIPROT ID: Q16656

背景: Transcription factor that activates the expression of the EIF2S1 (EIF2-alpha) gene. Links the transcriptional modulation of key metabolic genes to cellular growth and development. Implicated in the control of nuclear genes required for respiration, heme biosynthesis, and mitochondrial DNA transcription and replication.

抗原: A synthetic peptide of human NRF1

经过测试的应用: WB,IHC-F,IHC-P,ICC/IF,IP

推荐稀释比: WB: 1/500-1/1000 IHC: 1/50-1/100 IF: 1/50-1/200 IP: 1/20

种属反应性: Rabbit

克隆性: Rabbit Monoclonal

克隆编号: R02-9A7

分子量: Calculated MW: 54 kDa; Observed MW: 68 kDa

亚型: IgG

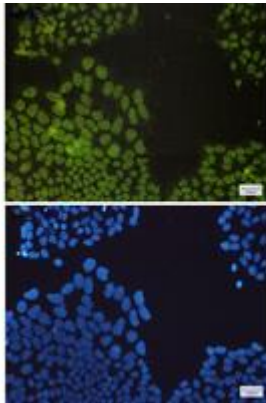
纯化: Affinity Purified

种属反应性: Human, Mouse and Rat

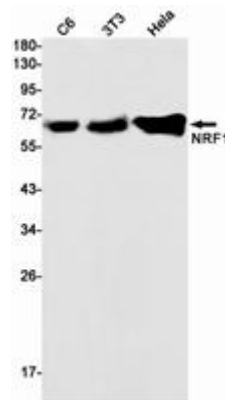
成分: PBS (without Mg²⁺ and Ca²⁺), pH 7.3 containing 50% glycerol, 0.5% BSA and 0.02% sodium azide

研究领域: Epigenetics and Nuclear Signaling

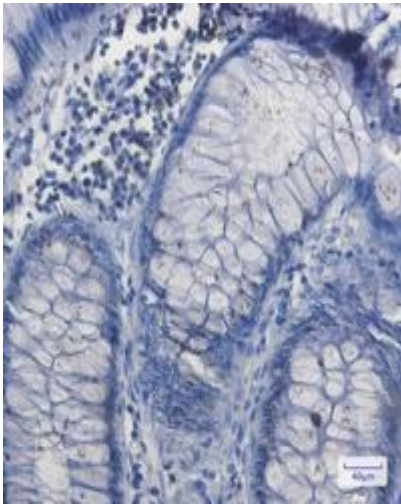
储存和运输: Store at -20°C. Avoid repeated freezing and thawing



Immunocytochemistry analysis of NRF1 (green) in HeLa using NRF1 antibody, and DAPI (blue)



Western blot analysis of NRF1 in C6, 3T3, HeLa lysates using Nrf1 antibody.



Immunohistochemistry analysis of paraffin-embedded Human colon cancer using NRF1 antibody. High-pressure and temperature Sodium Citrate pH 6.0 was used for antigen retrieval.