

## NR1H2 RABBIT PAB

货号: S219472

产品全名: NR1H2 兔多抗

基因符号: NER; UNR; LXRβ; LXR-b; NER-I; RIP15

**UNIPROT ID:** P55055 (Gene Accession - BC007790)

**背景:** The liver X receptors, LXRA (NR1H3; MIM 602423) and LXRβ, form a subfamily of the nuclear receptor superfamily and are key regulators of macrophage function, controlling transcriptional programs involved in lipid homeostasis and inflammation. The inducible LXRA is highly expressed in liver, adrenal gland, intestine, adipose tissue, macrophages, lung, and kidney, whereas LXRβ is ubiquitously expressed. Ligand-activated LXRs form obligate heterodimers with retinoid X receptors (RXRs; see MIM 180245) and regulate expression of target genes containing LXR response elements (summary by Korf et al., 2009 [PubMed 19436111]).

**抗原:** Fusion protein of human NR1H2

**经过测试的应用:** ELISA, WB, IHC

**推荐稀释比:** IHC: 100-300;WB: 200-1000;ELISA: 5000-10000

**种属反应性:** Rabbit

**克隆性:** Rabbit Polyclonal

**亚型:** Immunogen-specific rabbit IgG

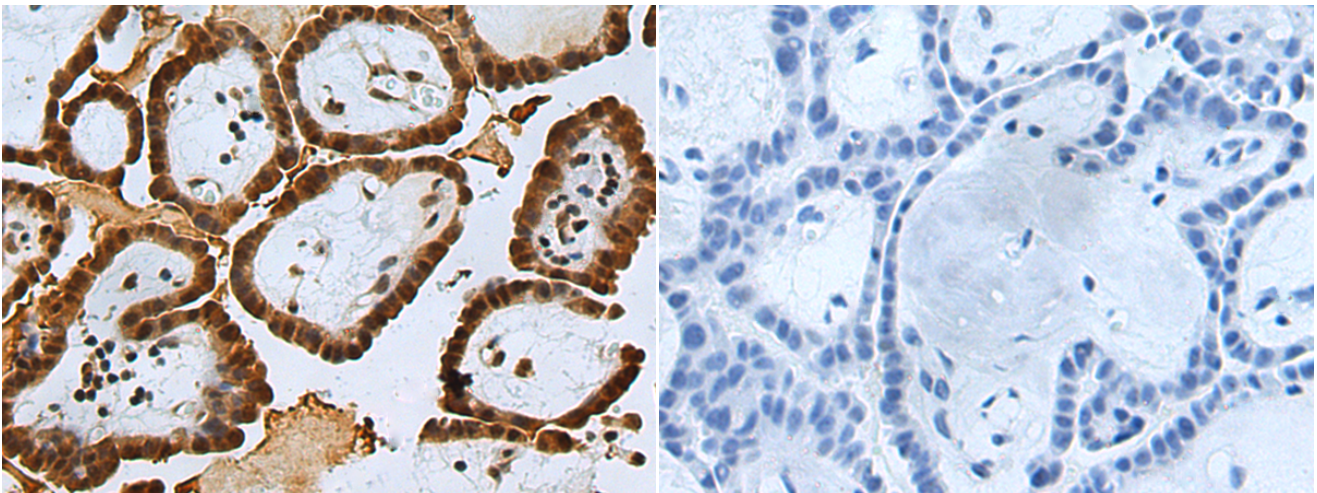
**纯化:** Antigen affinity purification

**种属反应性:** Human, Mouse, Rat

**成分:** PBS (without Mg<sup>2+</sup> and Ca<sup>2+</sup>), pH 7.4, 150 mM NaCl, 0.05% Sodium Azide and 40% glycerol

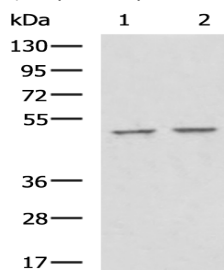
**研究领域:** Epigenetics and Nuclear Signaling, Metabolism, Cardiovascular

**储存和运输:** Store at -20°C. Avoid repeated freezing and thawing



Immunohistochemistry analysis of paraffin embedded Human thyroid cancer tissue using 219472(NR1H2 Antibody) at a dilution of 1/120(Nucleus).

In comparison with the IHC on the left, the same paraffin-embedded Human thyroid cancer tissue is first treated with the fusion protein and then with 219472(Anti-NR1H2 Antibody) at dilution 1/120.



Gel: 8%SDS-PAGE, Lysate: 40 µg;

Lane 1-2: Rat liver tissue and Mouse liver tissue lysates;

Primary antibody: 219472(NR1H2 Antibody) at dilution 1/400;

Secondary antibody: HRP-conjugated Goat anti rabbit IgG at 1/5000 dilution;

Exposure time: 1 minute