

NPY4R RABBIT PAB

货号: S213912

产品全名: NPY4R 兔多抗

基因符号 Y4; PPI; PPYRI; NPY4-R

UNIPROT ID: P50391 (Gene Accession - NP_005963)

背景: NPY4-R is expressed in several human tissues, including brain, coronary artery, and ileum. NPY4-R maps to human chromosome 10q11.2. NPY4R belongs to the Neuropeptide Receptor GPCR Family and may regulate central nervous system, cardiovascular, and gastrointestinal function.

抗原: Synthetic peptide of human NPY4R

经过测试的应用: ELISA, IHC

推荐稀释比: IHC: 25-100; ELISA: 2000-5000

种属反应性: Rabbit

克隆性: Rabbit Polyclonal

亚型: Immunogen-specific rabbit IgG

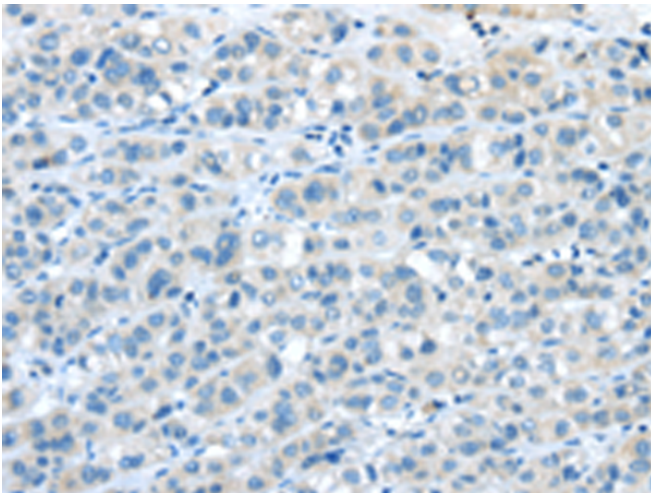
纯化: Antigen affinity purification

种属反应性: Human

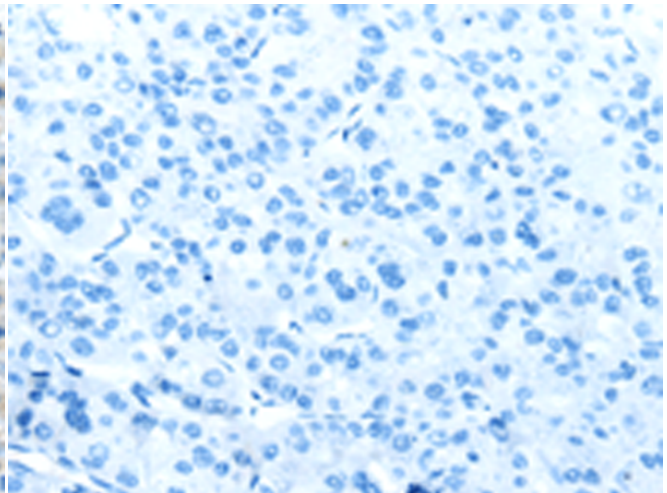
成分: PBS (without Mg²⁺ and Ca²⁺), pH 7.4, 150 mM NaCl, 0.05% Sodium Azide and 40% glycerol

研究领域: Signal Transduction, Neuroscience

储存和运输: Store at -20°C. Avoid repeated freezing and thawing



Immunohistochemistry analysis of paraffin embedded Human liver cancer tissue using 213912 (NPY4R Antibody) at a dilution of 1/30 (Cytoplasm and Cell membrane).



In comparison with the IHC on the left, the same paraffin-embedded Human liver cancer tissue is first treated with the synthetic peptide and then with 213912 (Anti-NPY4R Antibody) at dilution 1/30.