

NPRL2 RABBIT PAB

货号: S220761

产品全名: NPRL2 兔多抗

基因符号: NPR2; NPR2L; TUSC4

UNIPROT ID: Q8WTW4 (Gene Accession - NP_006536)

背景: NPRL2, also known as TUSC4 (tumor suppressor candidate 4), is a 380 amino acid protein that contains a bipartite nuclear localization signal and a granulin protein-binding domain. It is highly expressed in skeletal muscle, followed by brain, liver and pancreas, with lower expression in lung, kidney, placenta and heart. NPRL2 is also expressed in most lung cancer cell lines and may be involved in tumor suppression. NPRL2 may play a role in mismatch repair, cell cycle checkpoint signaling and activation of apoptotic pathways. It may also enhance the therapeutic efficacy of chemotherapy drugs such as cis-platin by resensitizing patients resistant to cisplatin treatment. The gene encoding NPRL2 is conserved between species and is expressed as two isoforms due to alternative splicing events.

抗原: Synthetic peptide of human NPRL2

经过测试的应用: ELISA, IHC

推荐稀释比: IHC: 50-200; ELISA: 2000-5000

种属反应性: Rabbit

克隆性: Rabbit Polyclonal

亚型: Immunogen-specific rabbit IgG

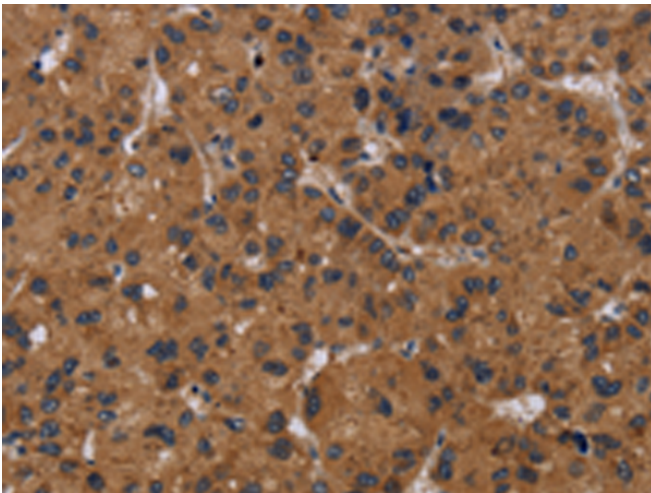
纯化: Antigen affinity purification

种属反应性: Human, Mouse

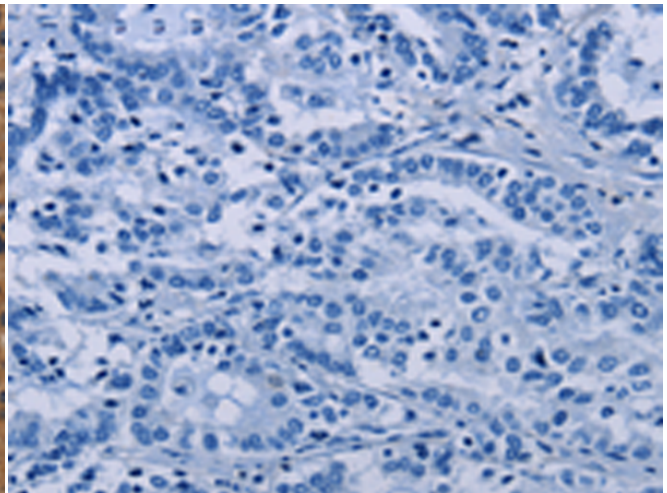
成分: PBS (without Mg²⁺ and Ca²⁺), pH 7.4, 150 mM NaCl, 0.05% Sodium Azide and 40% glycerol

研究领域: Epigenetics and Nuclear Signaling, Cancer

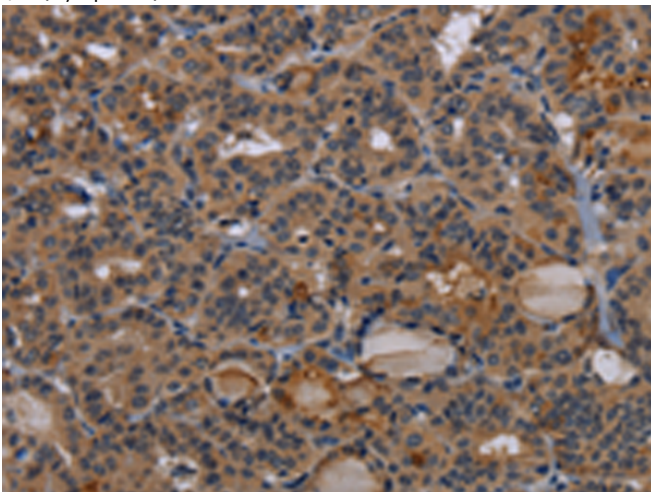
储存和运输: Store at -20°C. Avoid repeated freezing and thawing



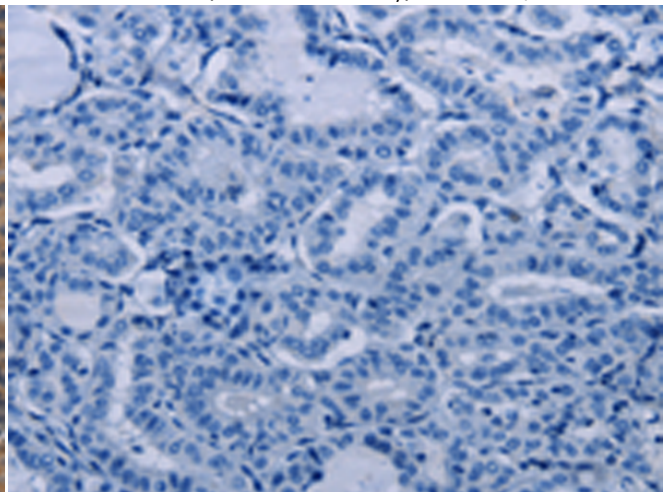
Immunohistochemistry analysis of paraffin embedded Human liver cancer tissue using 220761(NPRL2 Antibody) at a dilution of 1/50(Cytoplasm).



In comparison with the IHC on the left, the same paraffin-embedded Human liver cancer tissue is first treated with the synthetic peptide and then with 220761(Anti-NPRL2 Antibody) at dilution 1/50.



The image on the left is immunohistochemistry of paraffin-embedded Human thyroid cancer tissue using 220761(Anti-NPRL2 Antibody) at a dilution of 1/50.



In comparison with the IHC on the left, the same paraffin-embedded Human thyroid cancer tissue is first treated with synthetic peptide and then with D261974(Anti-NPRL2 Antibody) at dilution 1/50.



Product Description

Pioneering GTPase and Oncogene Product Development since 2010
