

## NPAP1 RABBIT PAB

货号: S220343

产品全名: NPAP1 兔多抗

基因符号: C15orf2

**UNIPROT ID:** Q9NZP6 (Gene Accession - NP\_061831)

**背景:** This gene is located in the Prader-Willi syndrome region on chromosome 15. This gene is biallelically expressed in adult testis and brain but is paternally imprinted in fetal brain. Defects in this gene may be associated with Prader-Willi syndrome.

**抗原:** Synthetic peptide of human NPAP1

**经过测试的应用:** ELISA, IHC

**推荐稀释比:** IHC: 50-200; ELISA: 1000-5000

**种属反应性:** Rabbit

**克隆性:** Rabbit Polyclonal

**亚型:** Immunogen-specific rabbit IgG

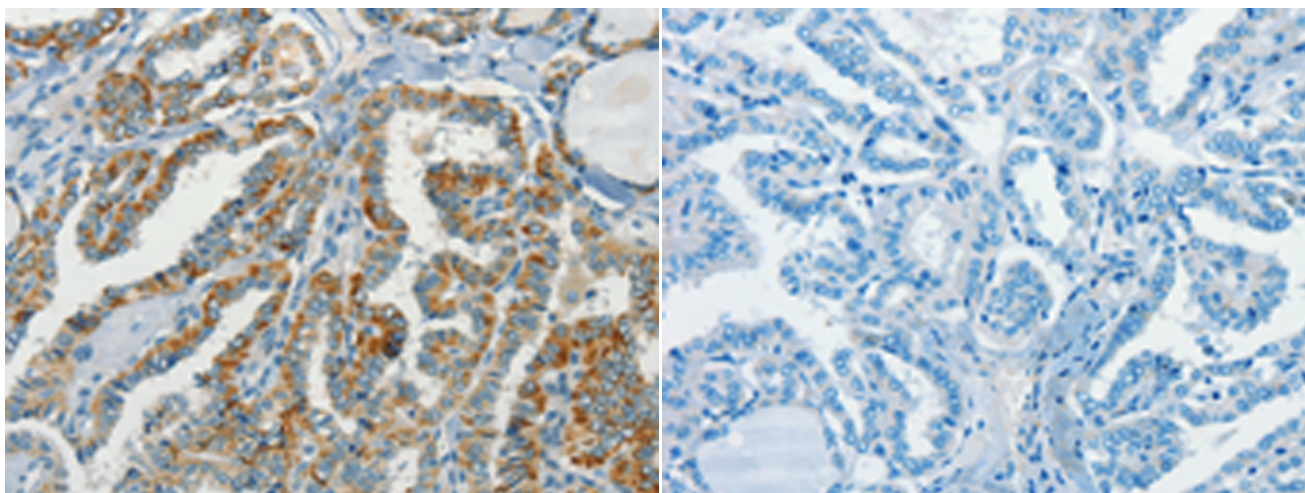
**纯化:** Antigen affinity purification

**种属反应性:** Human

**成分:** PBS (without Mg<sup>2+</sup> and Ca<sup>2+</sup>), pH 7.4, 150 mM NaCl, 0.05% Sodium Azide and 40% glycerol

**研究领域:** Developmental Biology

**储存和运输:** Store at -20°C. Avoid repeated freezing and thawing



Immunohistochemistry analysis of paraffin embedded Human thyroid cancer tissue using 220343(NPAP1 Antibody) at a dilution of 1/70(Cytoplasm).

In comparison with the IHC on the left, the same paraffin-embedded Human thyroid cancer tissue is first treated with the synthetic peptide and then with 220343(Anti-NPAP1 Antibody) at dilution 1/70.