

NME5 RABBIT PAB

货号: S210485

产品全名: NME5 兔多抗

基因符号 NM23H5; RSPH23; NM23-H5

UNIPROT ID: P56597 (Gene Accession - BC026182)

背景: The NME5 gene encodes a 212-amino acid polypeptide with homology to the NDP kinases. Northern blot analysis detected abundant expression of a 1.1-kb mRNA in testis. In situ hybridization to testis revealed NME5 mRNA in the seminiferous tubules in a pattern consistent with stage-specific expression in germinal cells during spermatogenesis.

抗原: Fusion protein of human NME5

经过测试的应用: ELISA, IHC

推荐稀释比: IHC: 50-200; ELISA: 2000-5000

种属反应性: Rabbit

克隆性: Rabbit Polyclonal

亚型: Immunogen-specific rabbit IgG

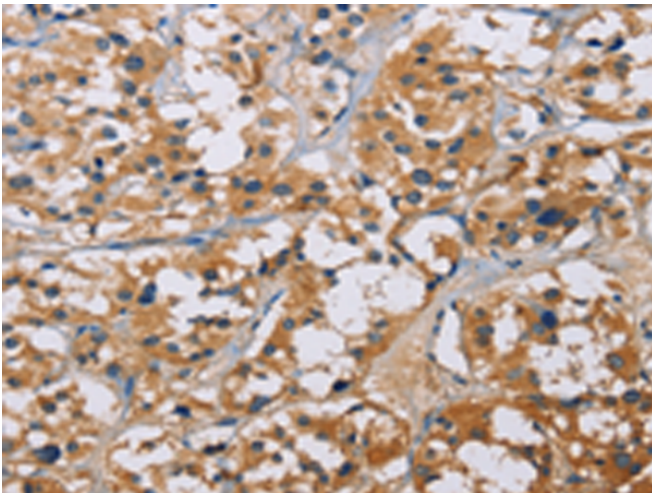
纯化: Antigen affinity purification

种属反应性: Human, Mouse

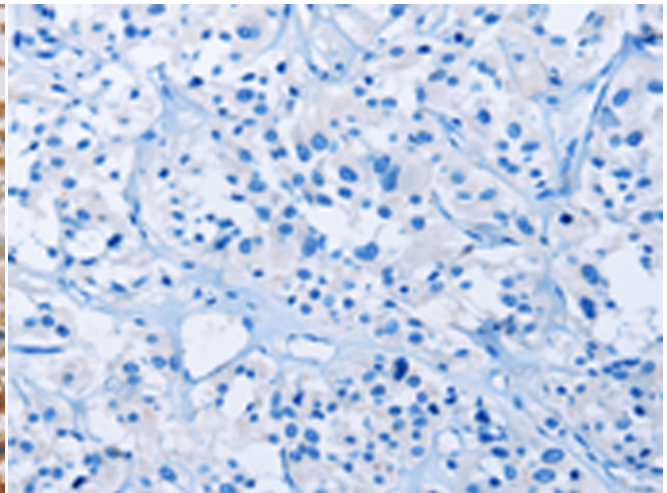
成分: PBS (without Mg²⁺ and Ca²⁺), pH 7.4, 150 mM NaCl, 0.05% Sodium Azide and 40% glycerol

研究领域: Cancer

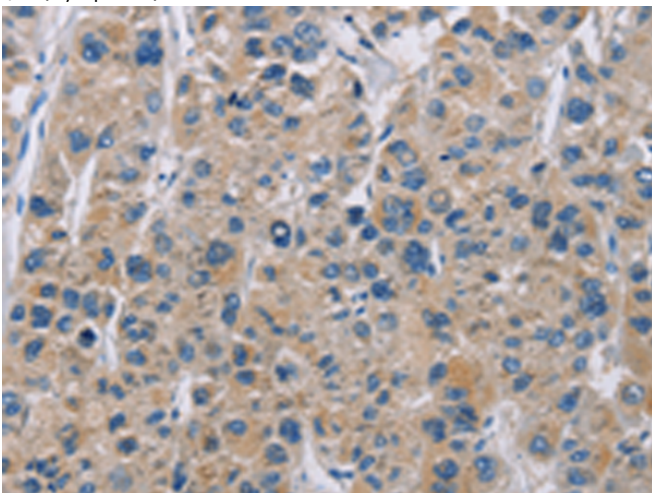
储存和运输: Store at -20°C. Avoid repeated freezing and thawing



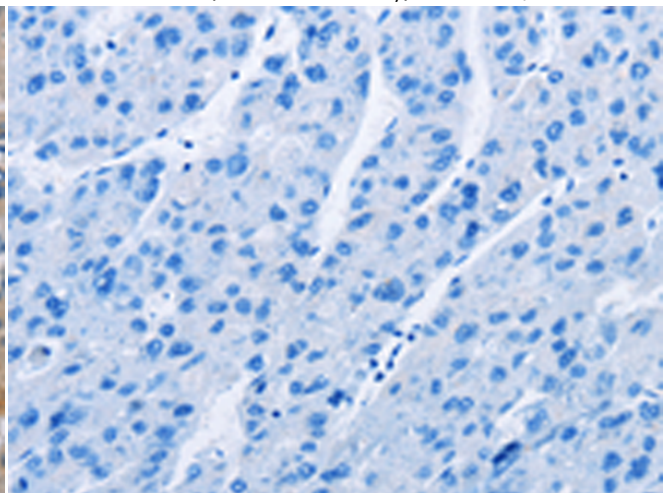
Immunohistochemistry analysis of paraffin embedded Human thyroid cancer tissue using 210485(NME5 Antibody) at a dilution of 1/50(Cytoplasm).



In comparison with the IHC on the left, the same paraffin-embedded Human thyroid cancer tissue is first treated with the fusion protein and then with 210485(Anti-NME5 Antibody) at dilution 1/50.



The image on the left is immunohistochemistry of paraffin-embedded Human liver cancer tissue using 210485(Anti-NME5 Antibody) at a dilution of 1/50.



In comparison with the IHC on the left, the same paraffin-embedded Human liver cancer tissue is first treated with fusion protein and then with D121044(Anti-NME5 Antibody) at dilution 1/50.



Product Description

Pioneering GTPase and Oncogene Product Development since 2010
