

## NLRP3 RABBIT PAB

货号: S220480

产品全名: NLRP3 兔多抗

基因符号: ALI; AVP; FCU; MWS; FCAS; CIAS1; NALP3; Clorf7; CLRI1; PYPAF1; AGTAVPRL

**UNIPROT ID:** Q96P20 (Gene Accession - NP\_004886)

**背景:** This gene encodes a pyrin-like protein containing a pyrin domain, a nucleotide-binding site (NBS) domain, and a leucine-rich repeat (LRR) motif. This protein interacts with the apoptosis-associated speck-like protein PYCARD/ASC, which contains a caspase recruitment domain, and is a member of the NALP3 inflammasome complex. This complex functions as an upstream activator of NF-kappaB signaling, and it plays a role in the regulation of inflammation, the immune response, and apoptosis. Mutations in this gene are associated with familial cold autoinflammatory syndrome (FCAS), Muckle-Wells syndrome (MWS), chronic infantile neurological cutaneous and articular (CINCA) syndrome, and neonatal-onset multisystem inflammatory disease (NOMID).

**抗原:** Synthetic peptide of human NLRP3

**经过测试的应用:** ELISA, IHC

**推荐稀释比:** IHC: 25-100; ELISA: 1000-2000

**种属反应性:** Rabbit

**克隆性:** Rabbit Polyclonal

**亚型:** Immunogen-specific rabbit IgG

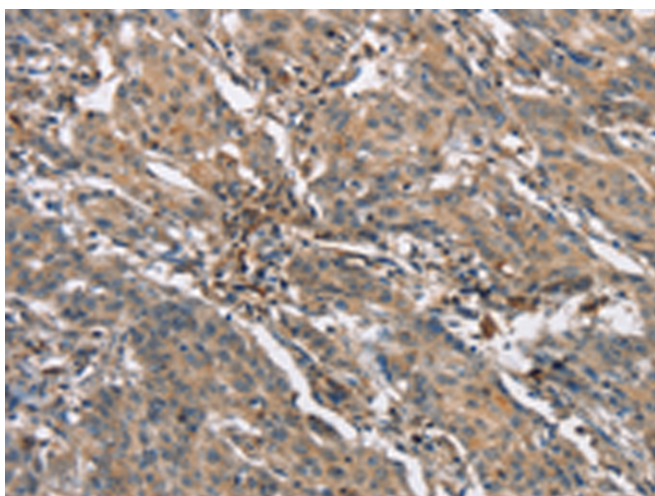
**纯化:** Antigen affinity purification

**种属反应性:** Human, Mouse

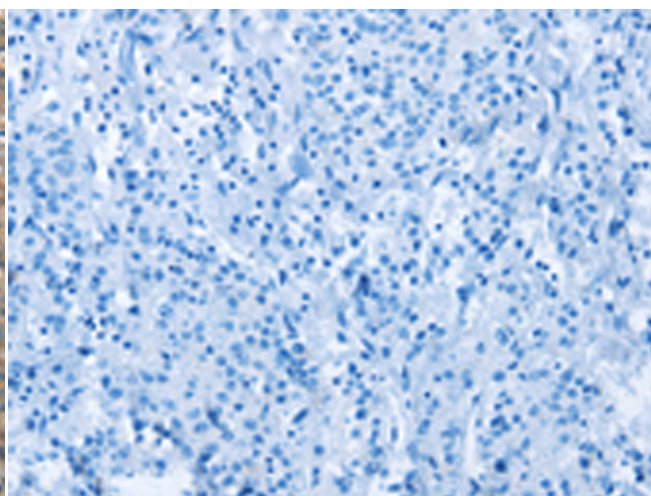
**成分:** PBS (without Mg<sup>2+</sup> and Ca<sup>2+</sup>), pH 7.4, 150 mM NaCl, 0.05% Sodium Azide and 40% glycerol

**研究领域:** Signal Transduction, Cancer, Cardiovascular, Immunology

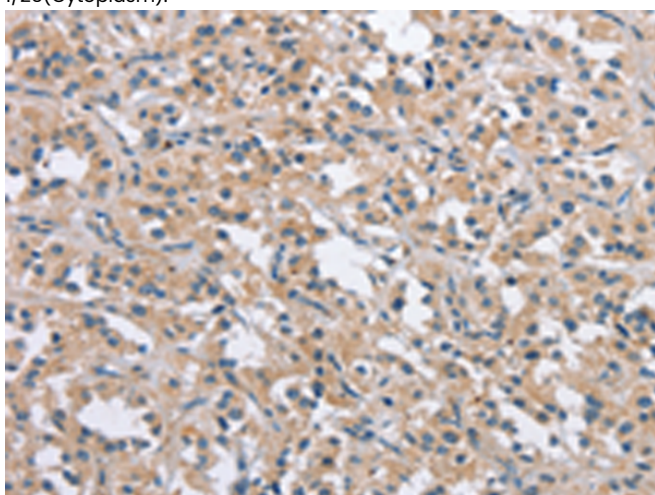
**储存和运输:** Store at -20°C. Avoid repeated freezing and thawing



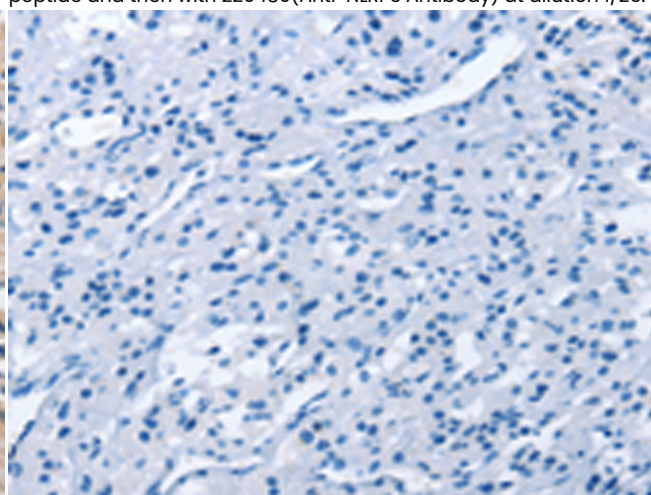
Immunohistochemistry analysis of paraffin embedded Human gastric cancer tissue using 220480(NLRP3 Antibody) at a dilution of 1/25(Cytoplasm).



In comparison with the IHC on the left, the same paraffin-embedded Human gastric cancer tissue is first treated with the synthetic peptide and then with 220480(Anti-NLRP3 Antibody) at dilution 1/25.



The image on the left is immunohistochemistry of paraffin-embedded Human thyroid cancer tissue using 220480(Anti-NLRP3 Antibody) at a dilution of 1/25.



In comparison with the IHC on the left, the same paraffin-embedded Human thyroid cancer tissue is first treated with synthetic peptide and then with D261580(Anti-NLRP3 Antibody) at dilution 1/25.



# Product Description

Pioneering GTPase and Oncogene Product Development since 2010

---