

NLRC4 RABBIT PAB

货号: S217243

产品全名: NLRC4 兔多抗

基因符号: CLAN; IPAF; AIFEC; CLAN1; CLANA; CLANB; CLANC; CLAND; FCAS4; CARD12; CLR2.1

UNIPROT ID: Q9NPP4 (Gene Accession - BC031555)

背景: This gene encodes a member of the caspase recruitment domain-containing NLR family. Family members play essential roles in innate immune response to a wide range of pathogenic organisms, tissue damage and other cellular stresses. Mutations in this gene result in autoinflammation with infantile enterocolitis. Alternative splicing results in multiple transcript variants.

抗原: Fusion protein of human NLRC4

经过测试的应用: ELISA, IHC

推荐稀释比: IHC: 25-50; ELISA: 5000-10000

种属反应性: Rabbit

克隆性: Rabbit Polyclonal

亚型: Immunogen-specific rabbit IgG

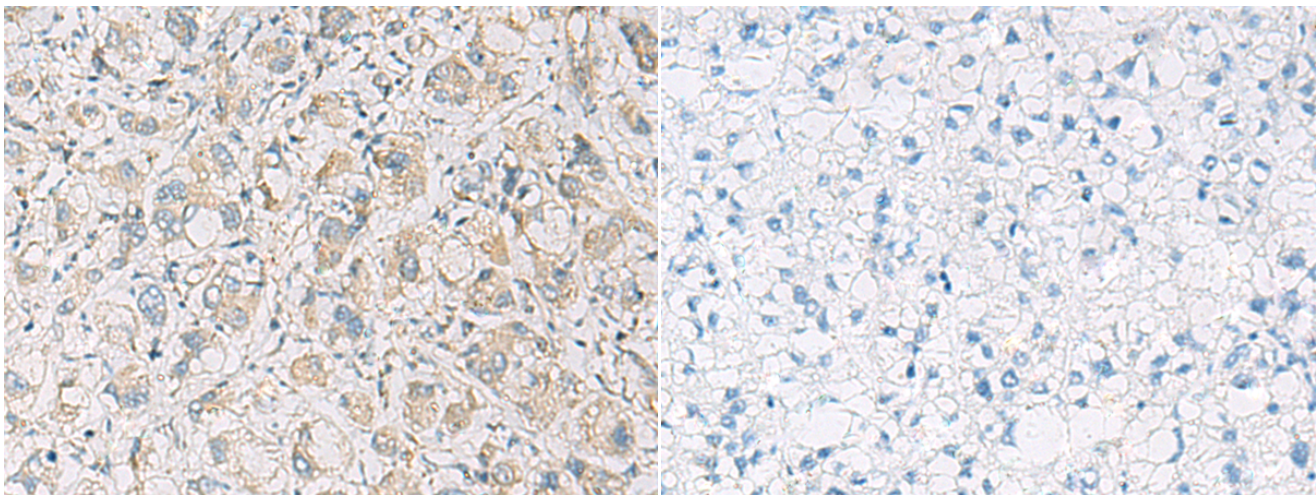
纯化: Antigen affinity purification

种属反应性: Human

成分: PBS (without Mg²⁺ and Ca²⁺), pH 7.4, 150 mM NaCl, 0.05% Sodium Azide and 40% glycerol

研究领域: Epigenetics and Nuclear Signaling, Cancer, Immunology

储存和运输: Store at -20°C. Avoid repeated freezing and thawing



Immunohistochemistry analysis of paraffin embedded Human liver cancer tissue using 217243(NLRC4 Antibody) at a dilution of 1/35(Cytoplasm).

In comparison with the IHC on the left, the same paraffin-embedded Human liver cancer tissue is first treated with the fusion protein and then with 217243(Anti-NLRC4 Antibody) at dilution 1/35.