

NLK RABBIT PAB

货号: S217651

产品全名: NLK 兔多抗

基因符号

UNIPROT ID: Q9UBE8 (Gene Accession - BC064663)

背景: Enables ubiquitin protein ligase binding activity. Involved in protein stabilization and transforming growth factor beta receptor signaling pathway. Predicted to be located in cytosol and nucleoplasm. Predicted to be active in cytoplasm and nucleus.

抗原: Fusion protein of human NLK

经过测试的应用: ELISA, WB, IHC

推荐稀释比: IHC: 50-100;WB: 500-2000;ELISA: 5000-10000

种属反应性: Rabbit

克隆性: Rabbit Polyclonal

亚型: Immunogen-specific rabbit IgG

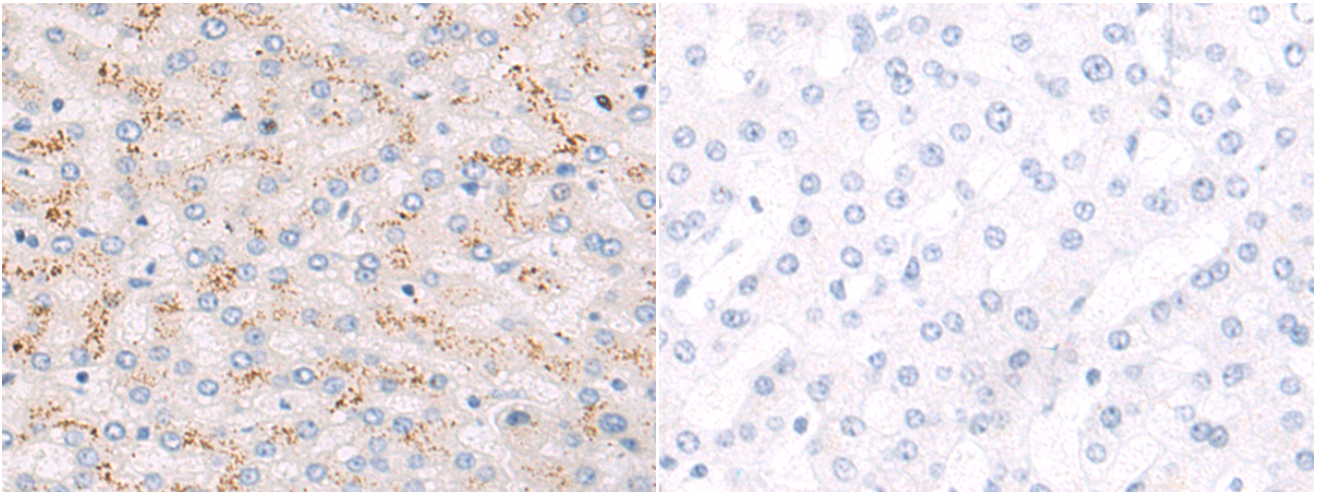
纯化: Antigen affinity purification

种属反应性: Human, Mouse, Rat

成分: PBS (without Mg²⁺ and Ca²⁺), pH 7.4, 150 mM NaCl, 0.05% Sodium Azide and 40% glycerol

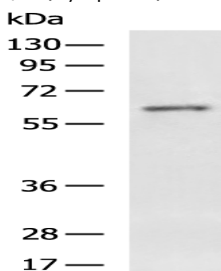
研究领域: Epigenetics and Nuclear Signaling, Stem Cells

储存和运输: Store at -20°C. Avoid repeated freezing and thawing



Immunohistochemistry analysis of paraffin embedded Human liver cancer tissue using 217651(NLK Antibody) at a dilution of 1/55(Cytoplasm).

In comparison with the IHC on the left, the same paraffin-embedded Human liver cancer tissue is first treated with the fusion protein and then with 217651(Anti-NLK Antibody) at dilution 1/55.



Gel: 8%SDS-PAGE, Lysate: 40 µg;

Lane: HeLa cell lysate;

Primary antibody: 217651(NLK Antibody) at dilution 1/800;

Secondary antibody: HRP-conjugated Goat anti rabbit IgG at 1/5000 dilution;

Exposure time: 15 seconds