

## NIPBL RABBIT PAB

货号: S218987

产品全名: NIPBL 兔多抗

基因符号: CDLS; IDN3; Scc2; CDLS1; IDN3-B

**UNIPROT ID:** Q6K79 (Gene Accession - BC033847)

**背景:** This gene encodes the homolog of the *Drosophila melanogaster* Nipped-B gene product and fungal Scc2-type sister chromatid cohesion proteins. The *Drosophila* protein facilitates enhancer-promoter communication of remote enhancers and plays a role in developmental regulation. It is also homologous to a family of chromosomal adherins with broad roles in sister chromatid cohesion, chromosome condensation, and DNA repair. The human protein has a bipartite nuclear targeting sequence and a putative HEAT repeat. Condensins, cohesins and other complexes with chromosome-related functions also contain HEAT repeats. Mutations in this gene result in Cornelia de Lange syndrome, a disorder characterized by dysmorphic facial features, growth delay, limb reduction defects, and cognitive disability. Two transcript variants encoding different isoforms have been found for this gene.

**抗原:** Fusion protein of human NIPBL

**经过测试的应用:** ELISA, IHC

**推荐稀释比:** IHC: 50-200; ELISA: 5000-10000

**种属反应性:** Rabbit

**克隆性:** Rabbit Polyclonal

**亚型:** Immunogen-specific rabbit IgG

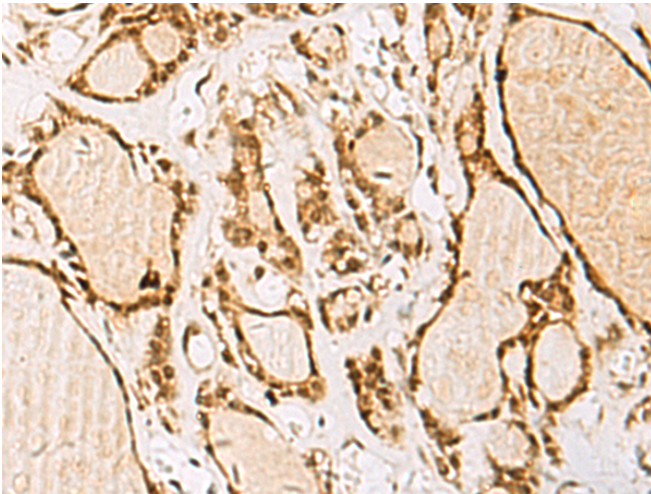
**纯化:** Antigen affinity purification

**种属反应性:** Human, Mouse

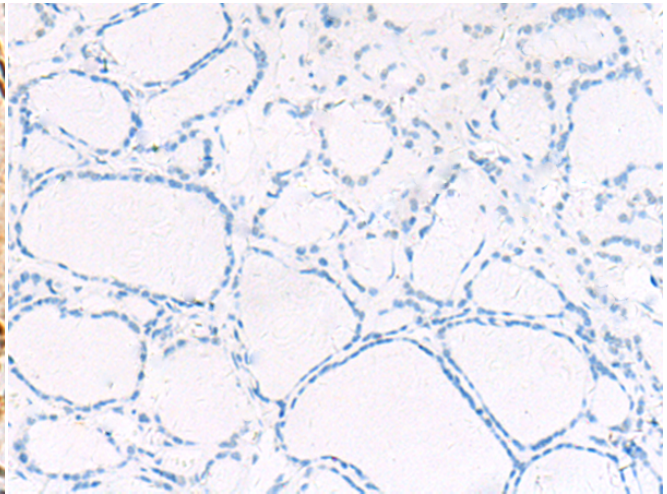
**成分:** PBS (without Mg<sup>2+</sup> and Ca<sup>2+</sup>), pH 7.4, 150 mM NaCl, 0.05% Sodium Azide and 40% glycerol

**研究领域:** Epigenetics and Nuclear Signaling

**储存和运输:** Store at -20°C. Avoid repeated freezing and thawing



Immunohistochemistry analysis of paraffin embedded Human thyroid cancer tissue using 218987 (NIPBL Antibody) at a dilution of 1/55 (Nucleus).



In comparison with the IHC on the left, the same paraffin-embedded Human thyroid cancer tissue is first treated with the fusion protein and then with 218987 (Anti-NIPBL Antibody) at dilution 1/55.