

## NIPA1 RABBIT PAB

货号: S218216

产品全名: NIPA1 兔多抗

基因符号 FSP3; SPG6

**UNIPROT ID:** Q7RTP0 (Gene Accession - BC025678 )

**背景:** This gene encodes a magnesium transporter that associates with early endosomes and the cell surface in a variety of neuronal and epithelial cells. This protein may play a role in nervous system development and maintenance. Multiple transcript variants encoding different isoforms have been found for this gene. Mutations in this gene have been associated with autosomal dominant spastic paraplegia 6.

**抗原:** Full length fusion 蛋白

**经过测试的应用:** ELISA, IHC

**推荐稀释比:** IHC: 25-100; ELISA: 5000-10000

**种属反应性:** Rabbit

**克隆性:** Rabbit Polyclonal

**亚型:** Immunogen-specific rabbit IgG

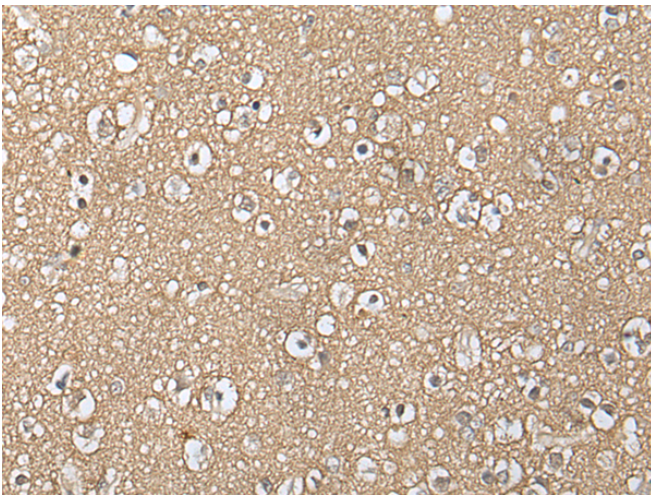
**纯化:** Antigen affinity purification

**种属反应性:** Human, Mouse

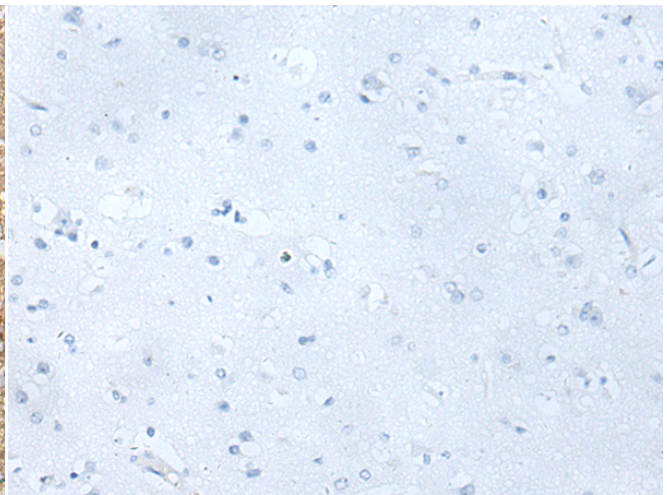
**成分:** PBS (without Mg<sup>2+</sup> and Ca<sup>2+</sup>), pH 7.4, 150 mM NaCl, 0.05% Sodium Azide and 40% glycerol

**研究领域:** Metabolism, Signal Transduction

**储存和运输:** Store at -20°C. Avoid repeated freezing and thawing



Immunohistochemistry analysis of paraffin embedded Human brain tissue using 218216(NIPA1 Antibody) at a dilution of 1/30(Cell membrane).



In comparison with the IHC on the left, the same paraffin-embedded Human brain tissue is first treated with the fusion protein and then with 218216(Anti-NIPA1 Antibody) at dilution 1/30.