

NIF3L1 RABBIT PAB

货号: S216991

产品全名: NIF3L1 兔多抗

基因符号: CALS-7; MDS015; ALS2CR1

UNIPROT ID: Q9GZT8 (Gene Accession - BC007654)

背景: May function as a transcriptional corepressor through its interaction with COPS2, negatively regulating the expression of genes involved in neuronal differentiation.

抗原: Fusion protein of human NIF3L1

经过测试的应用: ELISA, WB, IHC

推荐稀释比: IHC: 25-100;WB: 200-1000;ELISA: 2000-5000

种属反应性: Rabbit

克隆性: Rabbit Polyclonal

亚型: Immunogen-specific rabbit IgG

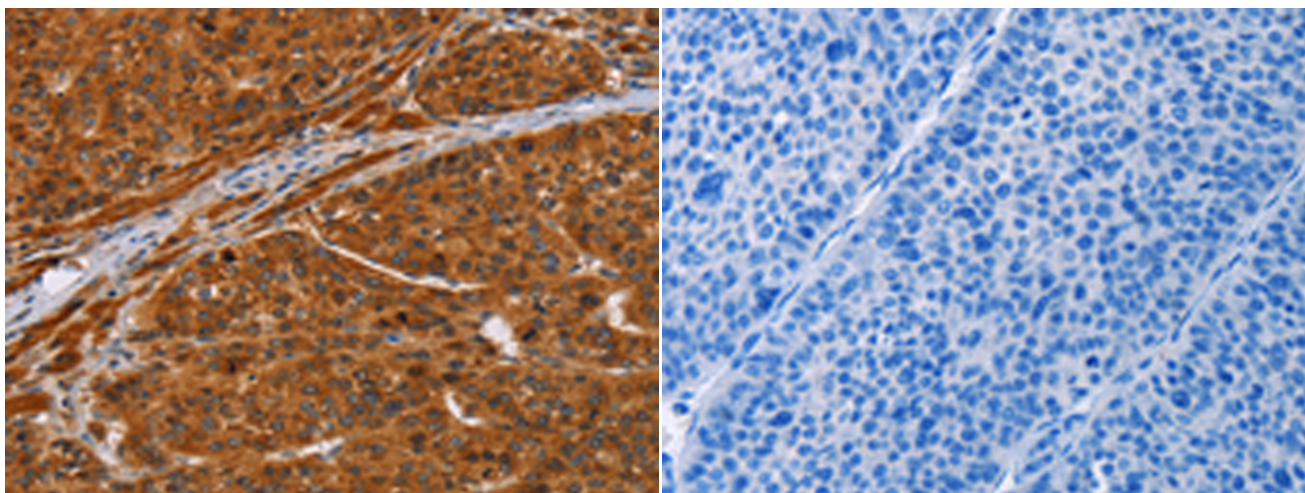
纯化: Antigen affinity purification

种属反应性: Human, Mouse, Rat

成分: PBS (without Mg²⁺ and Ca²⁺), pH 7.4, 150 mM NaCl, 0.05% Sodium Azide and 40% glycerol

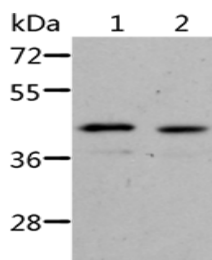
研究领域: Neuroscience

储存和运输: Store at -20°C. Avoid repeated freezing and thawing



Immunohistochemistry analysis of paraffin embedded Human liver cancer tissue using 216991(NIF3L1 Antibody) at a dilution of 1/20(Cytoplasm).

In comparison with the IHC on the left, the same paraffin-embedded Human liver cancer tissue is first treated with the fusion protein and then with 216991(Anti-NIF3L1 Antibody) at dilution 1/20.



Gel: 10%SDS-PAGE, Lysate: 40 µg;

Lane 1-2: Jurkat cells, human fetal kidney tissue;

Primary antibody: 216991(NIF3L1 Antibody) at dilution 1/500;

Secondary antibody: Goat anti rabbit IgG at 1/8000 dilution;

Exposure time: 2 minutes