

NIEMANN PICK C2 RABBIT MAB

货号: N263453

产品全名: Niemann Pick C2 兔单克隆抗体

基因符号 HE1; EDDM1

UNIPROT ID: P61916

背景: This gene encodes a protein containing a lipid recognition domain. The encoded protein may function in regulating the transport of cholesterol through the late endosomal/lysosomal system. Mutations in this gene have been associated with Niemann-Pick disease, type C2 and frontal lobe atrophy. [provided by RefSeq, Jul 2008]

抗原: Recombinant protein of human Niemann Pick C2

经过测试的应用: WB,IHC-F,IHC-P,ICC/IF

推荐稀释比: WB: 1/500-1/1000 IHC: 1/50-1/100 IF: 1/50-1/200

种属反应性: Rabbit

克隆性: Rabbit Monoclonal

克隆编号: R07-0C8

分子量: Calculated MW: 17 kDa; Observed MW: 17 kDa

亚型: IgG

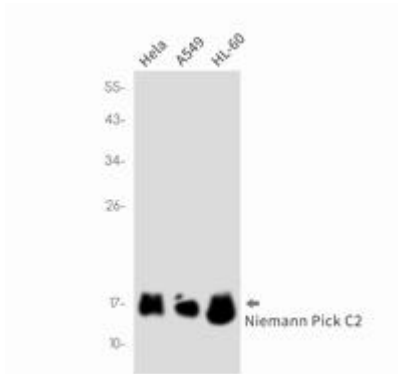
纯化: Affinity Purified

种属反应性: Human, Mouse and Rat

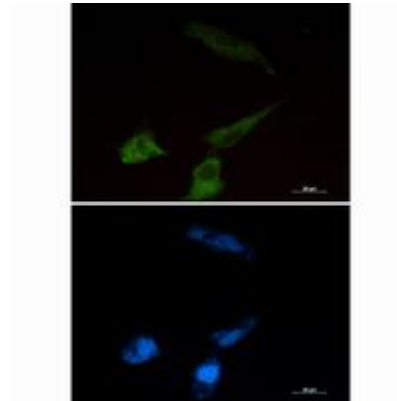
成分: PBS (without Mg²⁺ and Ca²⁺), pH 7.3 containing 50% glycerol, 0.5% BSA and 0.02% sodium azide

研究领域: Cardiovascular

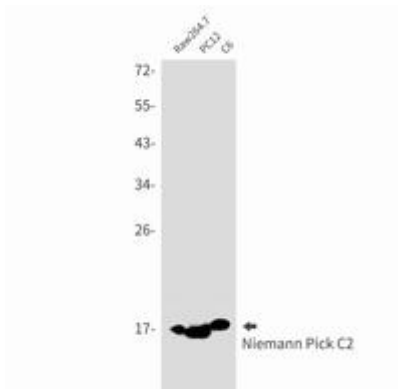
储存和运输: Store at -20°C. Avoid repeated freezing and thawing



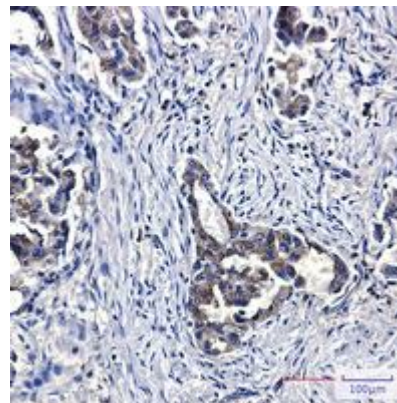
Western blot analysis of Niemann Pick C2 in HeLa, A549, HL-60 lysates using Niemann Pick C2 antibody



Immunocytochemistry analysis of Niemann Pick C2 (green) in U87-MG using Niemann Pick C2 antibody, and DAPI (blue).



Western blot analysis of Niemann Pick C2 in Raw264.7, PC-12, C6 lysates using Niemann Pick C2 antibody.



Immunohistochemistry analysis of paraffin-embedded Human lung cancer using Niemann Pick C2 antibody. High-pressure and temperature Sodium Citrate pH 6.0 was used for antigen retrieval.