

NIBAN3 RABBIT PAB

货号: S221610

产品全名: NIBAN3 兔多抗

基因符号 BCNP1; FAMI29C

UNIPROT ID: Q86XR2 (Gene Accession - NP_775815)

背景: FAMI29C, also known as BCNP1, BCNP1 is a 697 amino acid protein that belongs to the Niban family. Specifically expressed in B-lymphocytes, BCNP1 exists as five alternatively spliced isoforms. BCNP1 is highly expressed in B-cell malignancies, lymph node and spleen, with little to no expression in other tissues, including other hemopoietic tissues. The gene encoding the BCNP1 protein maps to human chromosome 19p13.11. Consisting of around 63 million bases with over 1,400 genes, chromosome 19 makes up over 2% of human genomic DNA. Chromosome 19 includes a diversity of interesting genes and is recognized for having the greatest gene density of the human chromosomes. It is the genetic home for a number of immunoglobulin superfamily members including the killer cell and leukocyte Ig-like receptors, a number of ICAMs, the CEACAM and PSG family, and Fc γ receptors. Key genes for eye color and hair color also map to chromosome 19.

抗原: Synthetic peptide of human NIBAN3

经过测试的应用: ELISA, IHC

推荐稀释比: IHC: 20-100; ELISA: 500-1000

种属反应性: Rabbit

克隆性: Rabbit Polyclonal

亚型: Immunogen-specific rabbit IgG

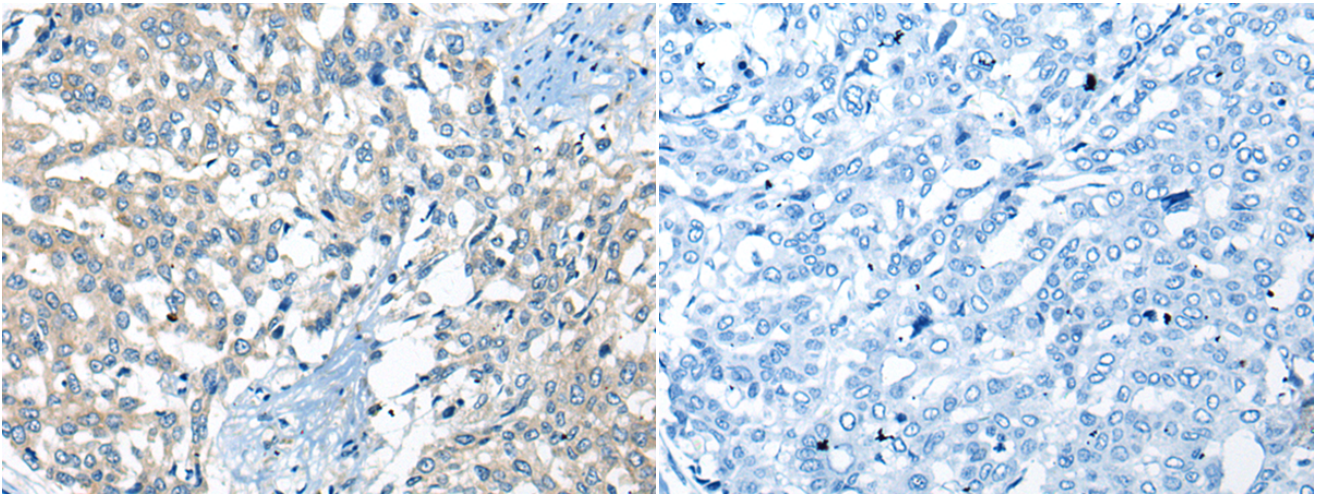
纯化: Antigen affinity purification

种属反应性: Human

成分: PBS (without Mg²⁺ and Ca²⁺), pH 7.4, 150 mM NaCl, 0.05% Sodium Azide and 40% glycerol

研究领域: Cell Biology

储存和运输: Store at -20°C. Avoid repeated freezing and thawing



Immunohistochemistry analysis of paraffin embedded Human liver cancer tissue using 221610(NIBAN3 Antibody) at a dilution of 1/30(Cytoplasm and Cell membrane).

In comparison with the IHC on the left, the same paraffin-embedded Human liver cancer tissue is first treated with the synthetic peptide and then with 221610(Anti-NIBAN3 Antibody) at dilution 1/30.