

NHP2 RABBIT PAB

货号: S218973

产品全名: NHP2 兔多抗

基因符号: DKCB2; NHP2P; NOLA2

UNIPROT ID: Q9NX24 (Gene Accession - BC000009)

背景: This gene is a member of the H/ACA snoRNPs (small nucleolar ribonucleoproteins) gene family. snoRNPs are involved in various aspects of rRNA processing and modification and have been classified into two families: C/D and H/ACA. The H/ACA snoRNPs also include the DKC1, NOLA1 and NOLA3 proteins. These four H/ACA snoRNP proteins localize to the dense fibrillar components of nucleoli and to coiled (Cajal) bodies in the nucleus. Both 18S rRNA production and rRNA pseudouridylation are impaired if any one of the four proteins is depleted. The four H/ACA snoRNP proteins are also components of the telomerase complex. This gene encodes a protein related to *Saccharomyces cerevisiae* Nhp2p. Alternative splicing results in multiple transcript variants.

抗原: Fusion protein of human NHP2

经过测试的应用: ELISA, WB, IHC

推荐稀释比: IHC: 50-300;WB: 500-2000;ELISA: 5000-10000

种属反应性: Rabbit

克隆性: Rabbit Polyclonal

亚型: Immunogen-specific rabbit IgG

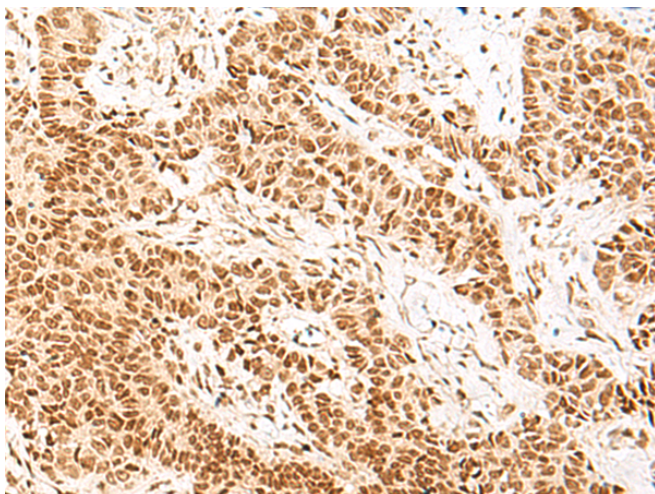
纯化: Antigen affinity purification

种属反应性: Human, Mouse

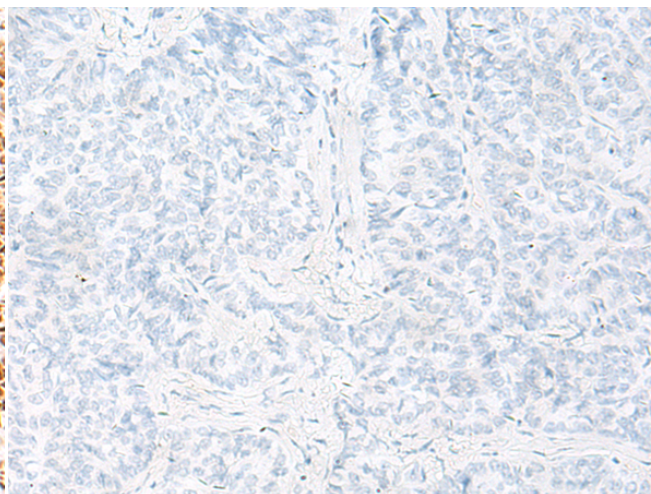
成分: PBS (without Mg²⁺ and Ca²⁺), pH 7.4, 150 mM NaCl, 0.05% Sodium Azide and 40% glycerol

研究领域: Epigenetics and Nuclear Signaling

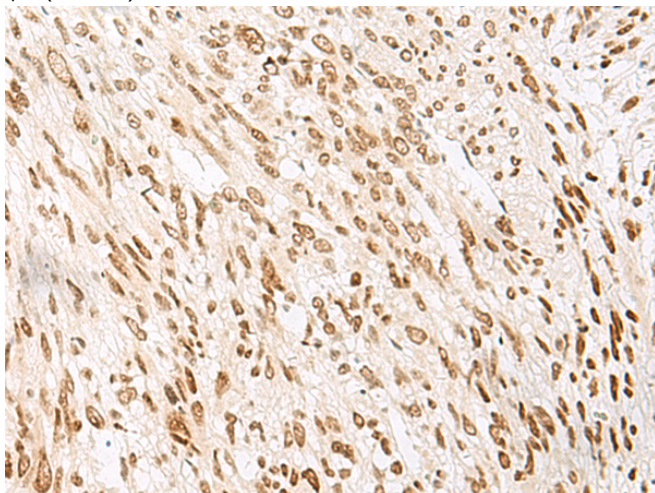
储存和运输: Store at -20°C. Avoid repeated freezing and thawing



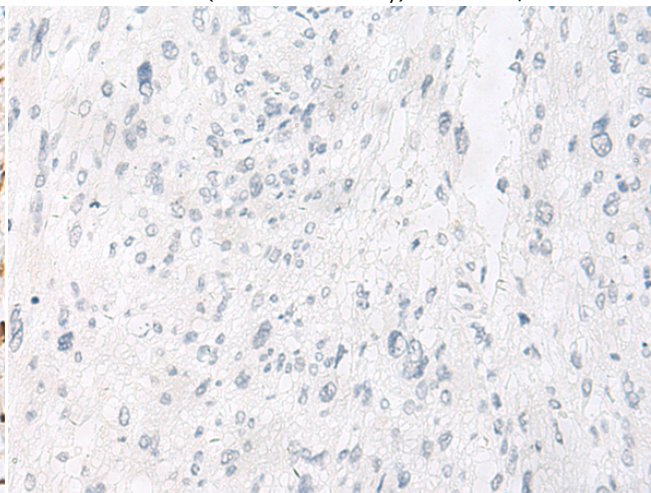
Immunohistochemistry analysis of paraffin embedded Human ovarian cancer tissue using 218973(NHP2 Antibody) at a dilution of 1/55(Nucleus).



In comparison with the IHC on the left, the same paraffin-embedded Human ovarian cancer tissue is first treated with the fusion protein and then with 218973(Anti-NHP2 Antibody) at dilution 1/55.

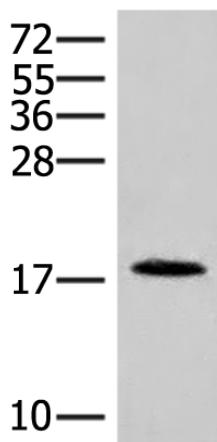


The image on the left is immunohistochemistry of paraffin-embedded Human liver cancer tissue using 218973(Anti-NHP2 Antibody) at a dilution of 1/55.



In comparison with the IHC on the left, the same paraffin-embedded Human liver cancer tissue is first treated with fusion protein and then with D225589(Anti-NHP2 Antibody) at dilution 1/55.

kDa



Gel: 12%SDS-PAGE, Lysate: 40 µg;
Lane: Human spleen tissue lysate;
Primary antibody: 218973(NHP2 Antibody) at dilution 1/400;
Secondary antibody: Goat anti rabbit IgG at 1/8000 dilution;
Exposure time: 1 minute



Product Description

Pioneering GTPase and Oncogene Product Development since 2010
