

NGEF RABBIT PAB

货号: S218909

产品全名: NGEF 兔多抗

基因符号 EPHEXIN; ARHGEF27

UNIPROT ID: Q8N5V2 (Gene Accession - BC031573)

背景: Acts as a guanine nucleotide exchange factor (GEF) which differentially activates the GTPases RHOA, RAC1 and CDC42. Plays a role in axon guidance regulating ephrin-induced growth cone collapse and dendritic spine morphogenesis. Upon activation by ephrin through EPHA4, the GEF activity switches toward RHOA resulting in its activation. Activated RHOA promotes cone retraction at the expense of RAC1- and CDC42-stimulated growth cone extension (By similarity).

抗原: Fusion protein of human NGEF

经过测试的应用: ELISA, IHC

推荐稀释比: IHC: 40-200; ELISA: 5000-10000

种属反应性: Rabbit

克隆性: Rabbit Polyclonal

亚型: Immunogen-specific rabbit IgG

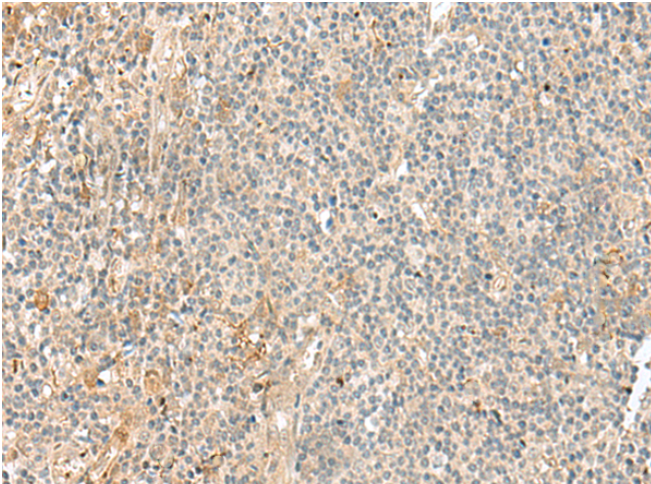
纯化: Antigen affinity purification

种属反应性: Human, Mouse, Rat

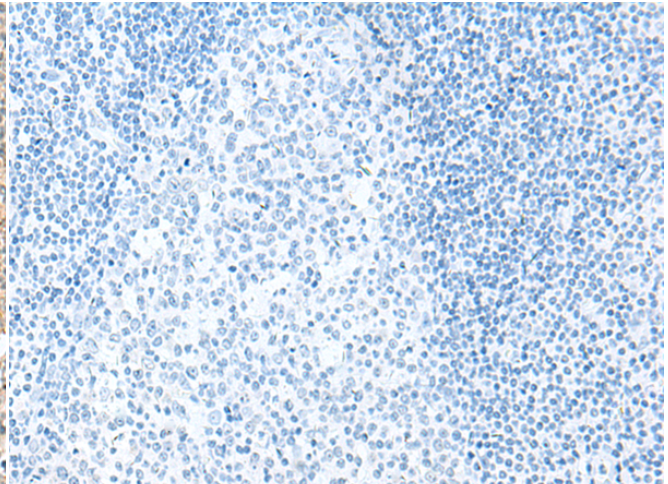
成分: PBS (without Mg²⁺ and Ca²⁺), pH 7.4, 150 mM NaCl, 0.05% Sodium Azide and 40% glycerol

研究领域: Signal Transduction, Neuroscience

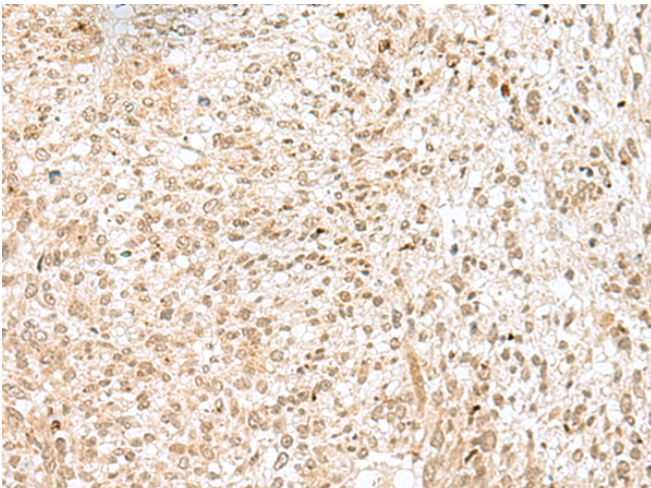
储存和运输: Store at -20°C. Avoid repeated freezing and thawing



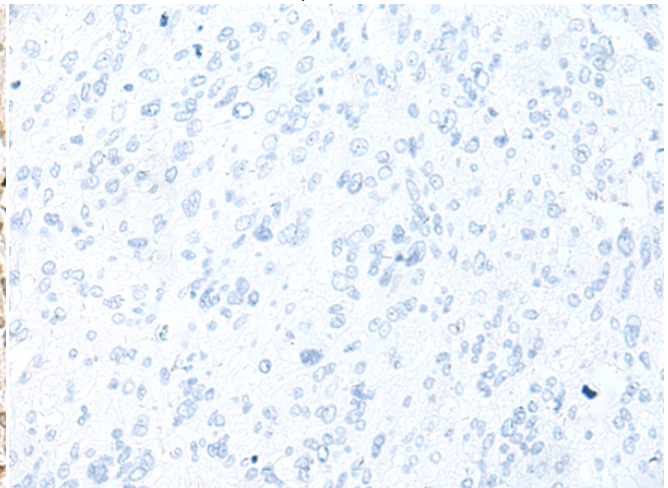
Immunohistochemistry analysis of paraffin embedded Human tonsil tissue using 218909(NGEF Antibody) at a dilution of 1/35(Cytoplasm or Nucleus).



In comparison with the IHC on the left, the same paraffin-embedded Human tonsil tissue is first treated with the fusion protein and then with 218909(Anti-NGEF Antibody) at dilution 1/35.



The image on the left is immunohistochemistry of paraffin-embedded Human liver cancer tissue using 218909(Anti-NGEF Antibody) at a dilution of 1/35.



In comparison with the IHC on the left, the same paraffin-embedded Human liver cancer tissue is first treated with fusion protein and then with D225483(Anti-NGEF Antibody) at dilution 1/35.



Product Description

Pioneering GTPase and Oncogene Product Development since 2010
