

NESPRIN1 RABBIT MAB

货号: N262594

产品全名: Nesprin1 兔单克隆抗体

基因符号 ARCA1; C6orf98; CPG2; EDMD4; Enaptin; Myne-1; MYNE1; Nesp1; Nesprin-1; SCAR8; Syne-1; SYNE1

UNIPROT ID: Q8NF91

背景: Multi-isomeric modular protein which forms a linking network between organelles and the actin cytoskeleton to maintain the subcellular spatial organization. Component of SUN-protein-containing multivariate complexes also called LINC complexes which link the nucleoskeleton and cytoskeleton by providing versatile outer nuclear membrane attachment sites for cytoskeletal filaments.

抗原: A synthetic peptide of human Nesprin 1

经过测试的应用: WB,IHC-F,IHC-P,ICC/IF

推荐稀释比: WB: 1/500-1/1000 IHC: 1/50-1/100 IF: 1/50-1/200

种属反应性: Rabbit

克隆性: Rabbit Monoclonal

克隆编号: R07-4E7

分子量: Calculated MW: 1011 kDa; Observed MW: 112 kDa

亚型: IgG

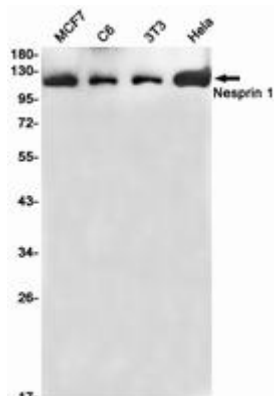
纯化: Affinity Purified

种属反应性: Human, Mouse and Rat

成分: PBS (without Mg²⁺ and Ca²⁺), pH 7.3 containing 50% glycerol, 0.5% BSA and 0.02% sodium azide

研究领域: Tags & Cell Markers

储存和运输: Store at -20°C. Avoid repeated freezing and thawing



Western blot analysis of Nesprin 1 in MCF-7, C6, 3T3, HeLa lysates using Nesprin1 antibody.



Product Description

Pioneering GTPase and Oncogene Product Development since 2010
