

NES RABBIT PAB

货号: S220906

产品全名: NES 兔多抗

基因符号 Nbla00170

UNIPROT ID: P48681 (Gene Accession - NP_006608)

背景: This gene encodes a member of the intermediate filament protein family and is expressed primarily in nerve cells. Required for brain and eye development. Promotes the disassembly of phosphorylated vimentin intermediate filaments (IF) during mitosis and may play a role in the trafficking and distribution of IF proteins and other cellular factors to daughter cells during progenitor cell division.

抗原: Synthetic peptide of human NES

经过测试的应用: ELISA, IHC

推荐稀释比: IHC: 25-100; ELISA: 1000-2000

种属反应性: Rabbit

克隆性: Rabbit Polyclonal

亚型: Immunogen-specific rabbit IgG

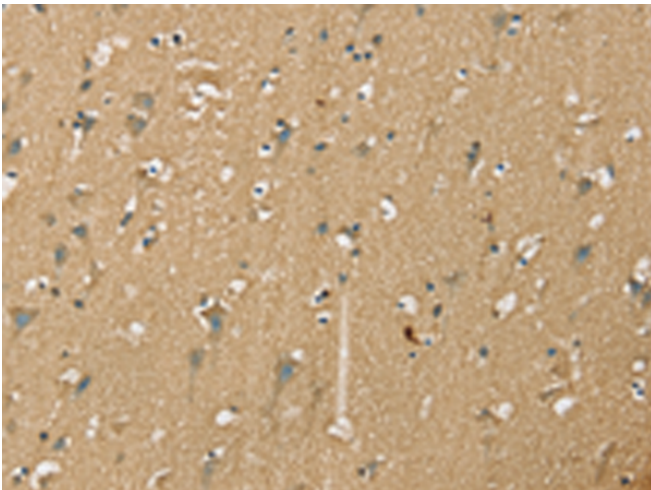
纯化: Antigen affinity purification

种属反应性: Human

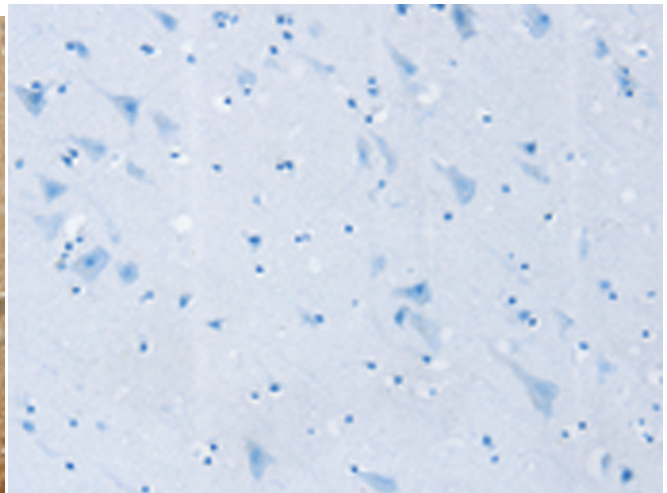
成分: PBS (without Mg²⁺ and Ca²⁺), pH 7.4, 150 mM NaCl, 0.05% Sodium Azide and 40% glycerol

研究领域: Cardiovascular, Cancer, Neuroscience, Stem Cells

储存和运输: Store at -20°C. Avoid repeated freezing and thawing



Immunohistochemistry analysis of paraffin embedded Human brain tissue using 220906(NES Antibody) at a dilution of 1/35(Cytoplasm).



In comparison with the IHC on the left, the same paraffin-embedded Human brain tissue is first treated with the synthetic peptide and then with 220906(Anti-NES Antibody) at dilution 1/35.