

## NELFA RABBIT PAB

货号: S218285

产品全名: NELFA 兔多抗

基因符号: WHSC2; NELF-A; P/OKcl.15

**UNIPROT ID:** Q9H3P2 (Gene Accession - BC002764)

**背景:** This gene is expressed ubiquitously with higher levels in fetal than in adult tissues. It encodes a protein sharing 93% sequence identity with the mouse protein. Wolf-Hirschhorn syndrome (WHS) is a malformation syndrome associated with a hemizygous deletion of the distal short arm of chromosome 4. This gene is mapped to the 165 kb WHS critical region, and may play a role in the phenotype of the WHS or Pitt-Rogers-Danks syndrome. The encoded protein is found to be capable of reacting with HLA-A2-restricted and tumor-specific cytotoxic T lymphocytes, suggesting a target for use in specific immunotherapy for a large number of cancer patients. This protein has also been shown to be a member of the NELF (negative elongation factor) protein complex that participates in the regulation of RNA polymerase II transcription elongation.

**抗原:** Fusion protein of human NELFA

**经过测试的应用:** ELISA, WB, IHC

**推荐稀释比:** IHC: 100-300;WB: 500-2000;ELISA: 5000-10000

**种属反应性:** Rabbit

**克隆性:** Rabbit Polyclonal

**亚型:** Immunogen-specific rabbit IgG

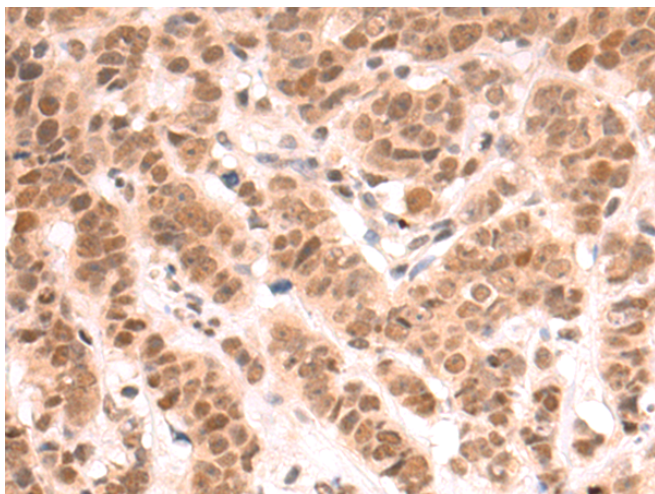
**纯化:** Antigen affinity purification

**种属反应性:** Human, Mouse

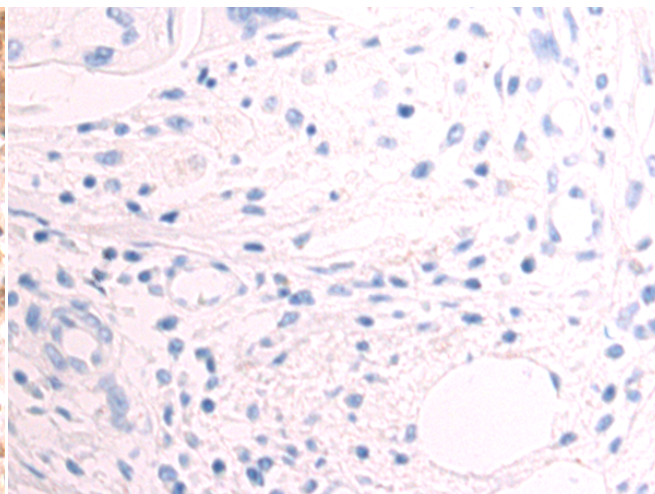
**成分:** PBS (without Mg<sup>2+</sup> and Ca<sup>2+</sup>), pH 7.4, 150 mM NaCl, 0.05% Sodium Azide and 40% glycerol

**研究领域:** Epigenetics and Nuclear Signaling

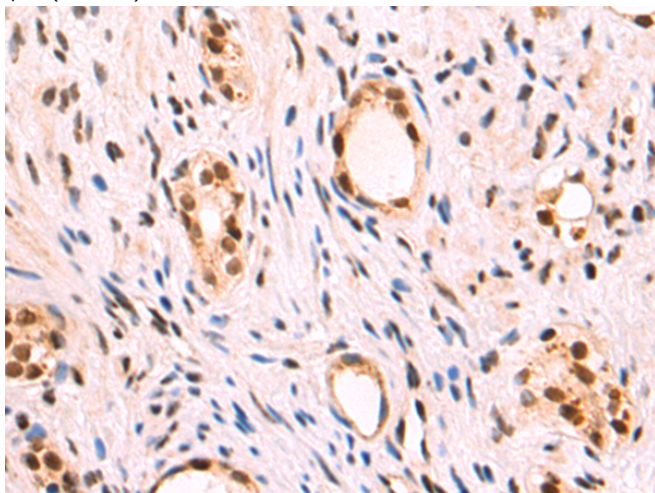
**储存和运输:** Store at -20°C. Avoid repeated freezing and thawing



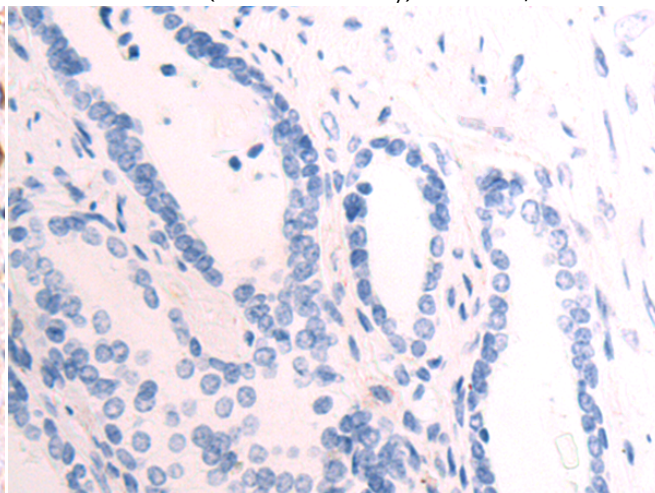
Immunohistochemistry analysis of paraffin embedded Human breast cancer tissue using 218285(NELFA Antibody) at a dilution of 1/100(Nucleus).



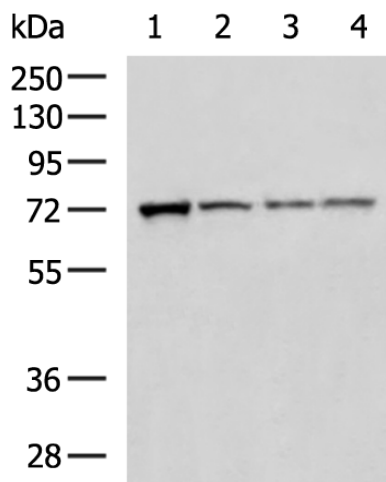
In comparison with the IHC on the left, the same paraffin-embedded Human breast cancer tissue is first treated with the fusion protein and then with 218285(Anti-NELFA Antibody) at dilution 1/100.



The image on the left is immunohistochemistry of paraffin-embedded Human prostate cancer tissue using 218285(Anti-NELFA Antibody) at a dilution of 1/100.



In comparison with the IHC on the left, the same paraffin-embedded Human prostate cancer tissue is first treated with fusion protein and then with D224094(Anti-NELFA Antibody) at dilution 1/100.



Gel: 8%SDS-PAGE, Lysate: 40 µg;  
 Lane 1-4: A549 cell, Mouse testis tissue, Jurkat cell, RAW264.7 cell lysates;  
 Primary antibody: 218285(NELFA Antibody) at dilution 1/800;  
 Secondary antibody: HRP-conjugated Goat anti rabbit IgG at 1/5000 dilution;  
 Exposure time: 15 seconds



# Product Description

Pioneering GTPase and Oncogene Product Development since 2010

---