

## NEK5 RABBIT PAB

货号: S220337

产品全名: NEK5 兔多抗

基因符号

**UNIPROT ID:** Q6P3R8 (Gene Accession - NP\_954983)

**背景:** Nek5 (NimA-related protein kinase 5) is a 708 amino acid protein that is related to NIMA, a protein that was originally discovered in *Aspergillus nidulans* and is necessary for entry into mitosis. One of several members of the Set/Thr protein kinase super family, Nek5 contains one protein kinase domain through which it catalyzes the ATP-dependent phosphorylation of target proteins. Like NIMA, Nek5 may be involved in mitotic regulation and cell cycle control.

**抗原:** Synthetic peptide of human NEK5

**经过测试的应用:** ELISA, IHC

**推荐稀释比:** IHC: 25-100; ELISA: 2000-5000

**种属反应性:** Rabbit

**克隆性:** Rabbit Polyclonal

**亚型:** Immunogen-specific rabbit IgG

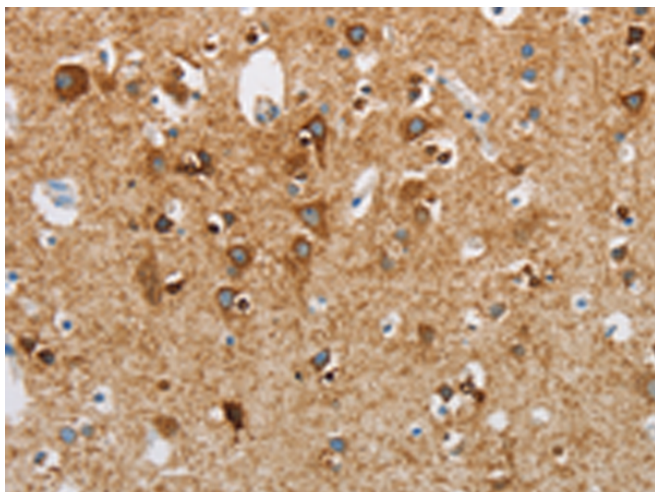
**纯化:** Antigen affinity purification

**种属反应性:** Human

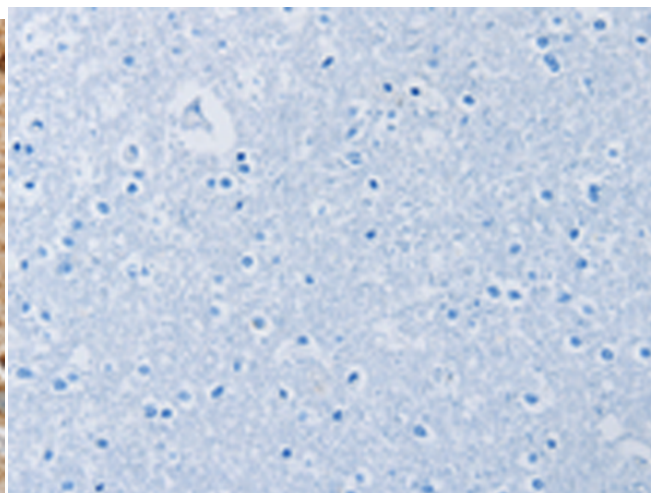
**成分:** PBS (without Mg<sup>2+</sup> and Ca<sup>2+</sup>), pH 7.4, 150 mM NaCl, 0.05% Sodium Azide and 40% glycerol

**研究领域:** Signal Transduction

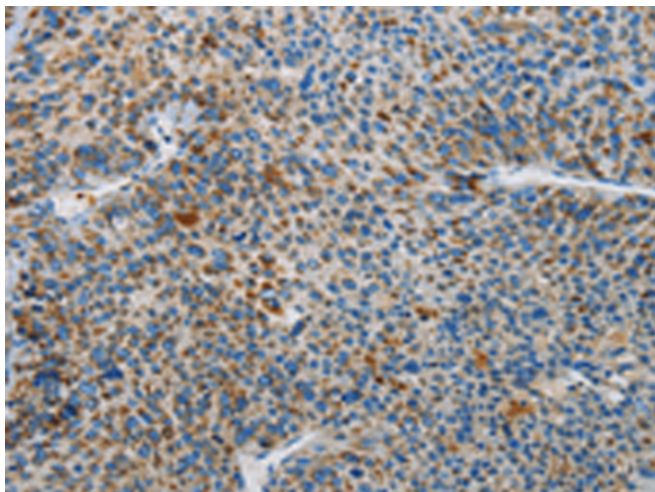
**储存和运输:** Store at -20°C. Avoid repeated freezing and thawing



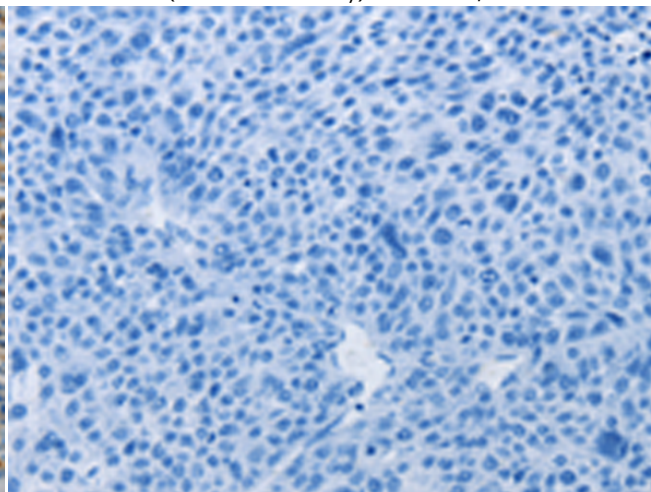
Immunohistochemistry analysis of paraffin embedded Human brain tissue using 220337(NEK5 Antibody) at a dilution of 1/25(Cytoplasm).



In comparison with the IHC on the left, the same paraffin-embedded Human brain tissue is first treated with the synthetic peptide and then with 220337(Anti-NEK5 Antibody) at dilution 1/25.



The image on the left is immunohistochemistry of paraffin-embedded Human liver cancer tissue using 220337(Anti-NEK5 Antibody) at a dilution of 1/25.



In comparison with the IHC on the left, the same paraffin-embedded Human liver cancer tissue is first treated with synthetic peptide and then with D261379(Anti-NEK5 Antibody) at dilution 1/25.



# Product Description

Pioneering GTPase and Oncogene Product Development since 2010

---