

## NEK10 RABBIT PAB

货号: S214123

产品全名: NEK10 兔多抗

基因符号

**UNIPROT ID:** Q6ZWH5 (Gene Accession - NP\_955379)

**背景:** Nek10 (NIMA (never in mitosis gene a)-related kinase 10) is a 712 amino acid protein belonging to the NIMA subfamily of kinases and functions as a magnesium-dependent serine/threonine protein kinase. Kinases of the NIMA subfamily are typically involved in genotoxic stress response and DNA replication. Nek10 is expressed in brain and may contain a 14-3-3 interaction motif in its C-terminus. The gene encoding Nek10 has been localized to a region on chromosome 3 that may contribute to vulnerability to addictions. Due to alternative splicing events, three isoforms exist for Nek10.

**抗原:** Synthetic peptide of human NEK10

**经过测试的应用:** ELISA, IHC

**推荐稀释比:** IHC: 25-100; ELISA: 2000-5000

**种属反应性:** Rabbit

**克隆性:** Rabbit Polyclonal

**亚型:** Immunogen-specific rabbit IgG

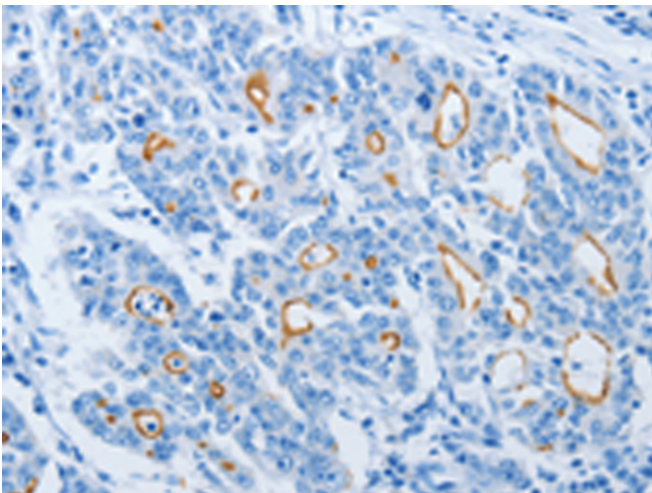
**纯化:** Antigen affinity purification

**种属反应性:** Human

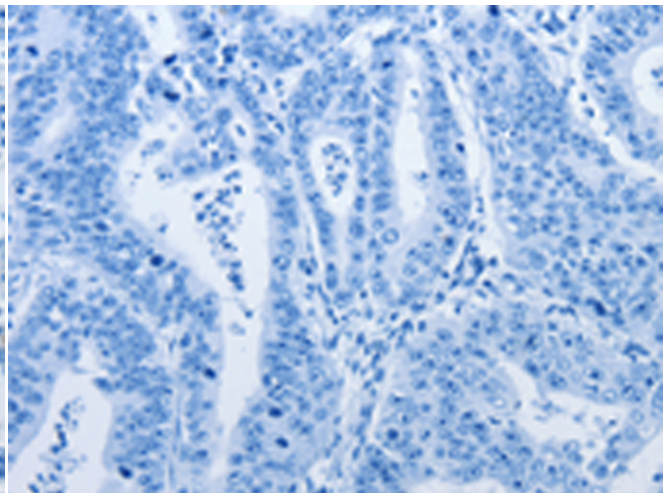
**成分:** PBS (without Mg<sup>2+</sup> and Ca<sup>2+</sup>), pH 7.4, 150 mM NaCl, 0.05% Sodium Azide and 40% glycerol

**研究领域:** Signal Transduction

**储存和运输:** Store at -20°C. Avoid repeated freezing and thawing



Immunohistochemistry analysis of paraffin embedded Human gastric cancer tissue using 214123(NEK10 Antibody) at a dilution of 1/20(Luminal membranous).



In comparison with the IHC on the left, the same paraffin-embedded Human gastric cancer tissue is first treated with the synthetic peptide and then with 214123(Anti-NEK10 Antibody) at dilution 1/20.