

## NEGR1 RABBIT PAB

货号: S219025

产品全名: NEGR1 兔多抗

基因符号: Ntra; KILON; IGLON4; DMML2433

**UNIPROT ID:** Q7Z3B1 (Gene Accession - BC036771)

背景: Predicted to act upstream of or within several processes, including feeding behavior; locomotory behavior; and positive regulation of neuron projection development. Predicted to be located in extracellular region and plasma membrane.

抗原: Fusion protein of human NEGR1

经过测试的应用: ELISA, WB, IHC

推荐稀释比: IHC: 50-200;WB: 1000-5000;ELISA: 5000-10000

种属反应性: Rabbit

克隆性: Rabbit Polyclonal

亚型: Immunogen-specific rabbit IgG

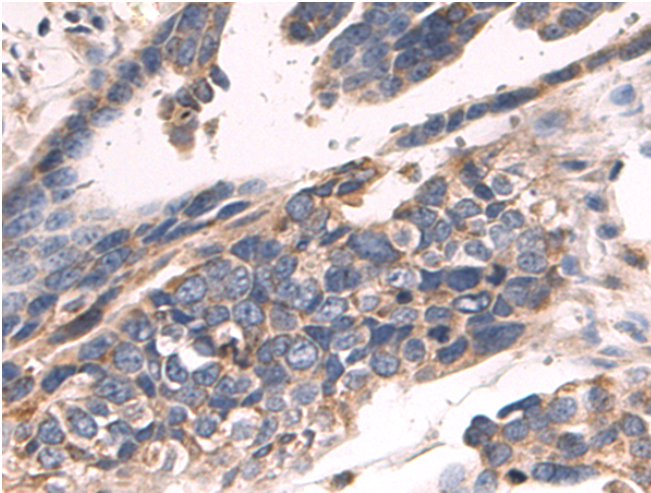
纯化: Antigen affinity purification

种属反应性: Human, Mouse, Rat

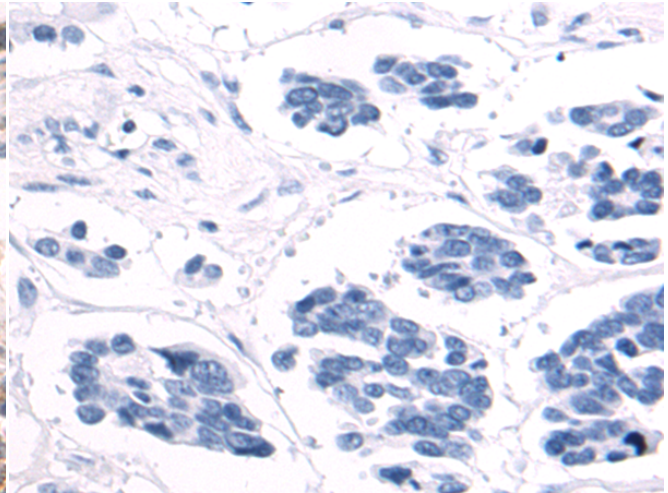
成分: PBS (without Mg<sup>2+</sup> and Ca<sup>2+</sup>), pH 7.4, 150 mM NaCl, 0.05% Sodium Azide and 40% glycerol

研究领域: Metabolism, Neuroscience, Developmental Biology

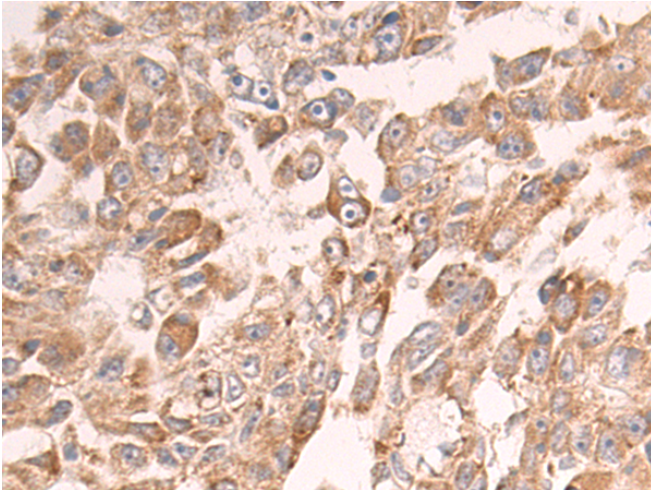
储存和运输: Store at -20°C. Avoid repeated freezing and thawing



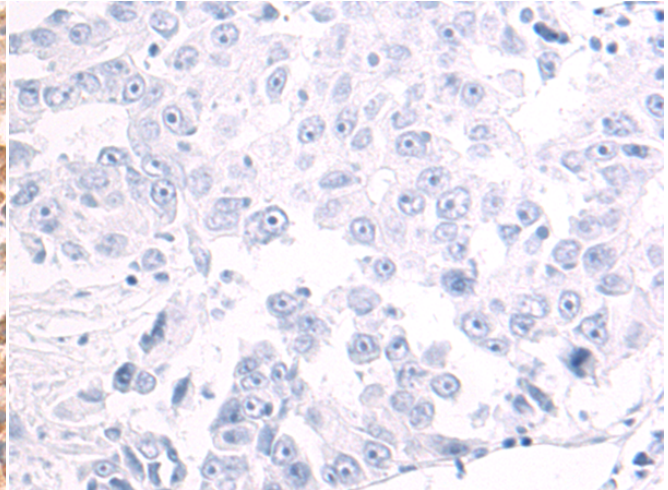
Immunohistochemistry analysis of paraffin embedded Human colorectal cancer tissue using 219025(NEGR1 Antibody) at a dilution of 1/55(Cytoplasm and Cell membrane).



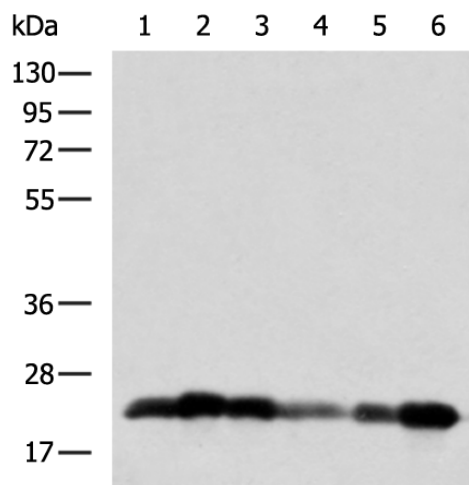
In comparison with the IHC on the left, the same paraffin-embedded Human colorectal cancer tissue is first treated with the fusion protein and then with 219025(Anti-NEGR1 Antibody) at dilution 1/55.



The image on the left is immunohistochemistry of paraffin-embedded Human liver cancer tissue using 219025(Anti-NEGR1 Antibody) at a dilution of 1/55.



In comparison with the IHC on the left, the same paraffin-embedded Human liver cancer tissue is first treated with fusion protein and then with D225672(Anti-NEGR1 Antibody) at dilution 1/55.



Gel: 8%SDS-PAGE, Lysate: 40 µg;  
 Lane 1-6: HepG2, 231, MCF7, 293T, LOVO, HT-29 cell;  
 Primary antibody: 219025(NEGR1 Antibody) at dilution 1/800;  
 Secondary antibody: HRP-conjugated Goat anti rabbit IgG at 1/5000 dilution;  
 Exposure time: 10 seconds



# Product Description

Pioneering GTPase and Oncogene Product Development since 2010

---