

NEDD8 RABBIT MAB

货号: N261703

产品全名: NEDD8 兔单克隆抗体

基因符号 NEDD8; NEDD8; Neddylin; Neural precursor cell expressed developmentally down-regulated protein 8; NEDD-8; Ubiquitin-like protein Nedd8

UNIPROT ID: Q15843

背景: Neural precursor cell-expressed developmentally downregulated protein 8 (NEDD8), also known as Rub1 (related to ubiquitin 1) in plants and yeast, is a member of the ubiquitin-like protein family. The covalent attachment of NEDD8 to target proteins, termed neddylation, is a reversible, multi-step process analogous to ubiquitination.

抗原: A synthetic peptide of human NEDD8

经过测试的应用: WB,IHC-F,IHC-P,ICC/IF,IP

推荐稀释比: WB: 1/500-1/1000 IHC: 1/50-1/100 IF: 1/50-1/200 IP: 1/20

种属反应性: Rabbit

克隆性: Rabbit Monoclonal

克隆编号: R02-4G8

分子量: Calculated MW: 9 kDa; Observed MW: 9 kDa

亚型: IgG

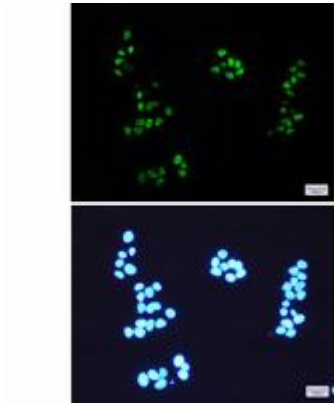
纯化: Affinity Purified

种属反应性: Human

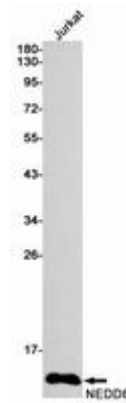
成分: PBS (without Mg²⁺ and Ca²⁺), pH 7.3 containing 50% glycerol, 0.5% BSA and 0.02% sodium azide

研究领域: Cell Biology

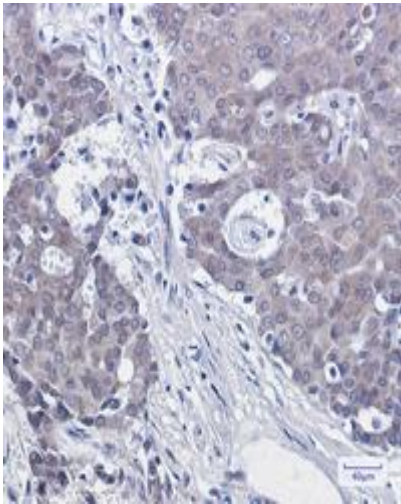
储存和运输: Store at -20°C. Avoid repeated freezing and thawing



Immunocytochemistry analysis of NEDD8 (green) in HeLa using NEDD8 antibody, and DAPI (blue)



Western blot analysis of NEDD8 in Jurkat lysates using NEDD8 antibody.



Immunohistochemistry analysis of paraffin-embedded Human breast cancer using NEDD8 antibody. High-pressure and temperature Sodium Citrate pH 6.0 was used for antigen retrieval.