

NDUFS6 RABBIT MAB

货号: N262586

产品全名: NDUFS6 兔单克隆抗体

基因符号 CI-13kA; CII3KDA; CI-13kD-A

UNIPROT ID: O75380

背景: Accessory subunit of the mitochondrial membrane respiratory chain NADH dehydrogenase (Complex I), that is believed not to be involved in catalysis. Complex I functions in the transfer of electrons from NADH to the respiratory chain. The immediate electron acceptor for the enzyme is believed to be ubiquinone.

抗原: Recombinant protein of human NDUFS6

经过测试的应用: WB,IP

推荐稀释比: WB: 1/500-1/1000 IP: 1/20

种属反应性: Rabbit

克隆性: Rabbit Monoclonal

克隆编号: R08-9E1

分子量: Calculated MW: 14 kDa; Observed MW: 14 kDa

亚型: IgG

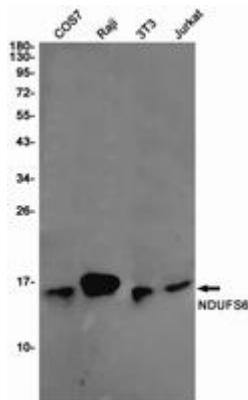
纯化: Affinity Purified

种属反应性: Human, Mouse and Rat,Hamster

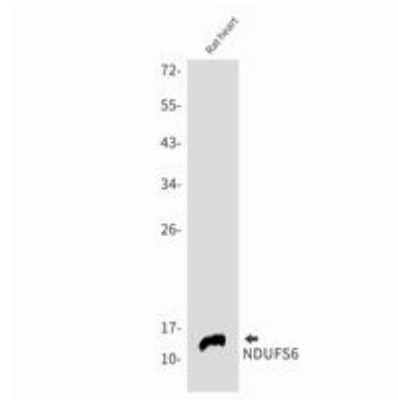
成分: PBS (without Mg²⁺ and Ca²⁺), pH 7.3 containing 50% glycerol, 0.5% BSA and 0.02% sodium azide

研究领域: Tags & Cell Markers

储存和运输: Store at -20°C. Avoid repeated freezing and thawing



Western blot analysis of NDUFS6 in COS7, Raji, 3T3, Jurkat lysates using NDUFS6 antibody.



Western blot analysis of NDUFS6 in rat heart lysates using NDUFS6 antibody.