

## NDUFS6 RABBIT MAB

货号: N262587

产品全名: NDUFS6 兔单克隆抗体

基因符号 CI-13kA; CII3KDA; CI-13kD-A

**UNIPROT ID:** O75380

**背景:** Accessory subunit of the mitochondrial membrane respiratory chain NADH dehydrogenase (Complex I), that is believed not to be involved in catalysis. Complex I functions in the transfer of electrons from NADH to the respiratory chain. The immediate electron acceptor for the enzyme is believed to be ubiquinone.

**抗原:** Recombinant protein of human NDUFS6

**经过测试的应用:** WB,IHC-P

**推荐稀释比:** WB: 1/500-1/1000 IHC: 1/50-1/100

**种属反应性:** Rabbit

**克隆性:** Rabbit Monoclonal

**克隆编号:** R07-6A6

**分子量:** Calculated MW: 14 kDa; Observed MW: 14 kDa

**亚型:** IgG

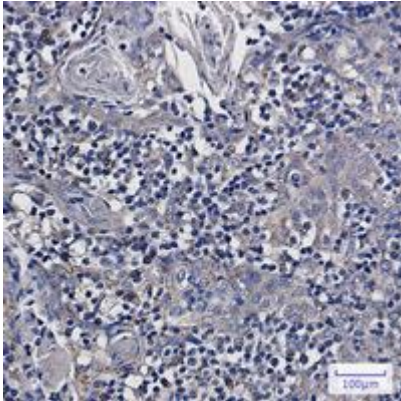
**纯化:** Affinity Purified

**种属反应性:** Human,Mouse

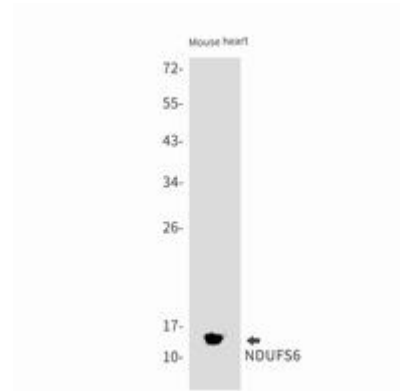
**成分:** PBS (without Mg<sup>2+</sup> and Ca<sup>2+</sup>), pH 7.3 containing 50% glycerol, 0.5% BSA and 0.02% sodium azide

**研究领域:** Tags & Cell Markers

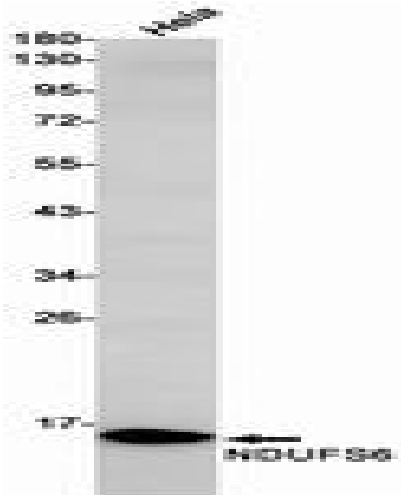
**储存和运输:** Store at -20°C. Avoid repeated freezing and thawing



Immunohistochemistry analysis of paraffin-embedded Human tonsil using NDUFS6 antibody. High-pressure and temperature Sodium Citrate pH 6.0 was used for antigen retrieval.



Western blot analysis of NDUFS6 in mouse heart lysates using NDUFS6 antibody.



Western blot analysis of NDUFS6 in HeLa lysates using NDUFS6 antibody.