

## NDUFC2 RABBIT MAB

货号: N262584

产品全名: NDUFC2 兔单克隆抗体

基因符号 HLC-1; B14.5b; NADHDH2; CI-B14.5b

**UNIPROT ID:** O95298

**背景:** Accessory subunit of the mitochondrial membrane respiratory chain NADH dehydrogenase (Complex I), that is believed not to be involved in catalysis. Complex I functions in the transfer of electrons from NADH to the respiratory chain. The immediate electron acceptor for the enzyme is believed to be ubiquinone.

**抗原:** Recombinant protein of human NDUFC2

**经过测试的应用:** WB,IHC-P

**推荐稀释比:** WB: 1/500-1/1000 IHC: 1/50-1/100

**种属反应性:** Rabbit

**克隆性:** Rabbit Monoclonal

**克隆编号:** R05-2C2

**分子量:** Calculated MW: 14 kDa; Observed MW: 14 kDa

**亚型:** IgG

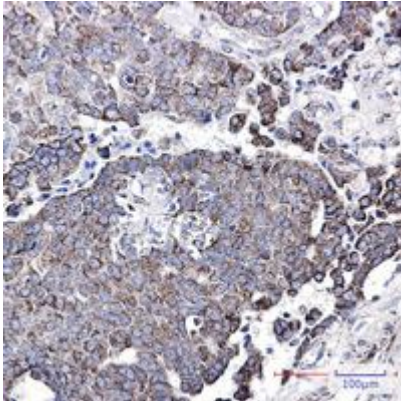
**纯化:** Affinity Purified

**种属反应性:** Human

**成分:** PBS (without Mg<sup>2+</sup> and Ca<sup>2+</sup>), pH 7.3 containing 50% glycerol, 0.5% BSA and 0.02% sodium azide

**研究领域:** Signal Transduction

**储存和运输:** Store at -20°C. Avoid repeated freezing and thawing



Immunohistochemistry analysis of paraffin-embedded Human breast cancer using NDUFC2 antibody. High-pressure and temperature Sodium Citrate pH 6.0 was used for antigen retrieval.



Western blot analysis of NDUFC2 in Jurkat lysates using NDUFC2 antibody.