

## NDUFB6 RABBIT PAB

货号: S218060

产品全名: NDUFB6 兔多抗

基因符号: Cl; B17

**UNIPROT ID:** O95139 (Gene Accession - BC009801)

**背景:** The protein encoded by this gene is a subunit of the multisubunit NADH:ubiquinone oxidoreductase (complex I). Mammalian complex I is composed of 45 different subunits. It locates at the mitochondrial inner membrane. This protein has NADH dehydrogenase activity and oxidoreductase activity. It transfers electrons from NADH to the respiratory chain. The immediate electron acceptor for the enzyme is believed to be ubiquinone. Alternative splicing occurs at this locus and three transcript variants encoding distinct isoforms have been identified.

**抗原:** Full length fusion 蛋白

**经过测试的应用:** ELISA, WB, IHC

**推荐稀释比:** IHC: 25-100;WB: 500-2000;ELISA: 5000-10000

**种属反应性:** Rabbit

**克隆性:** Rabbit Polyclonal

**亚型:** Immunogen-specific rabbit IgG

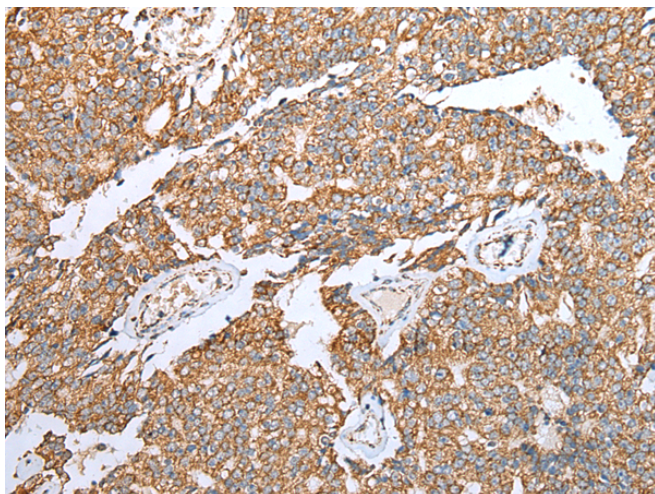
**纯化:** Antigen affinity purification

**种属反应性:** Human

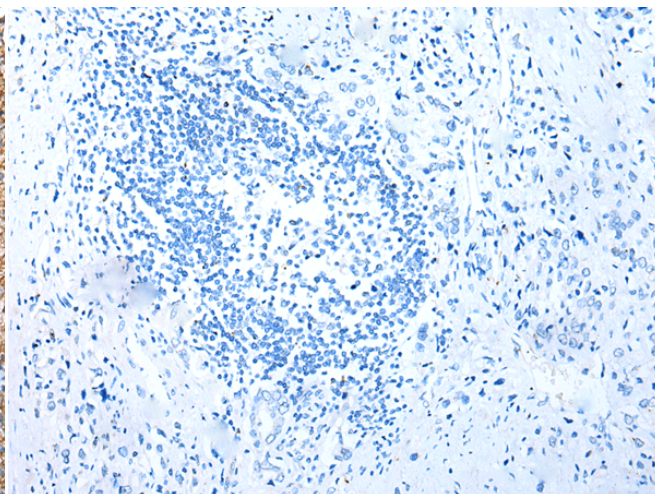
**成分:** PBS (without Mg<sup>2+</sup> and Ca<sup>2+</sup>), pH 7.4, 150 mM NaCl, 0.05% Sodium Azide and 40% glycerol

**研究领域:** Metabolism, Cancer, Cell Biology

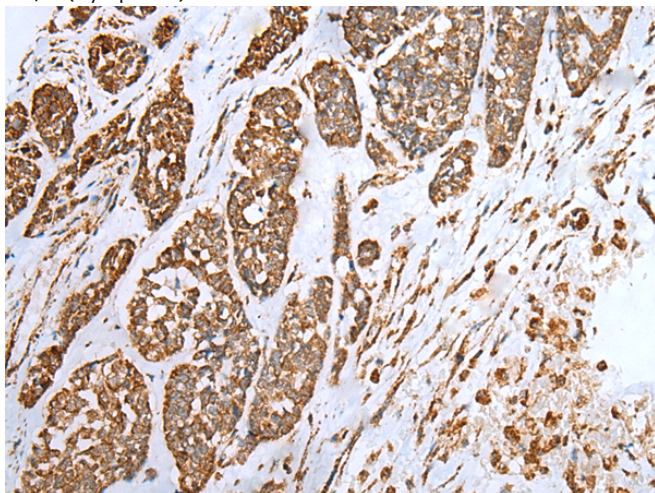
**储存和运输:** Store at -20°C. Avoid repeated freezing and thawing



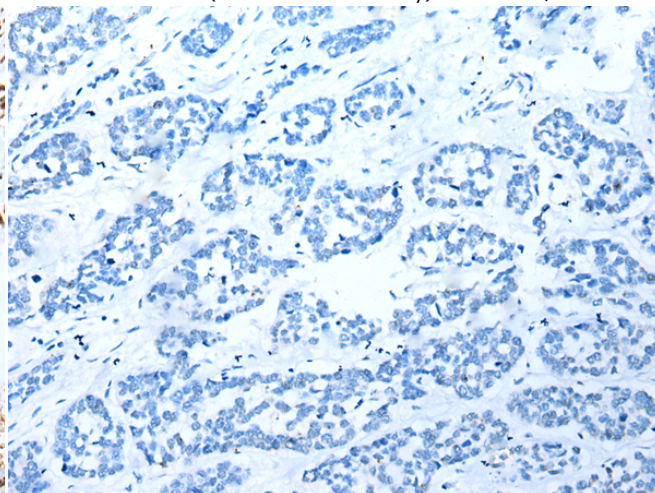
Immunohistochemistry analysis of paraffin embedded Human prostate cancer tissue using 218060(NDUFB6 Antibody) at a dilution of 1/20(Cytoplasm).



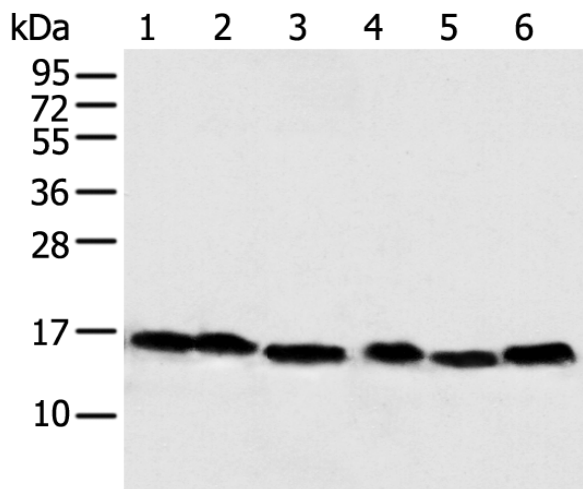
In comparison with the IHC on the left, the same paraffin-embedded Human prostate cancer tissue is first treated with the fusion protein and then with 218060(Anti-NDUFB6 Antibody) at dilution 1/20.



The image on the left is immunohistochemistry of paraffin-embedded Human esophagus cancer tissue using 218060(Anti-NDUFB6 Antibody) at a dilution of 1/20.



In comparison with the IHC on the left, the same paraffin-embedded Human esophagus cancer tissue is first treated with fusion protein and then with D223633(Anti-NDUFB6 Antibody) at dilution 1/20.



Gel: 12%SDS-PAGE, Lysate: 40 µg;  
 Lane 1-6: 293T, HeLa, PC-3, Lncap and 231 cell, Human fetal muscle tissue;  
 Primary antibody: 218060(NDUFB6 Antibody) at dilution 1/500;  
 Secondary antibody: Goat anti rabbit IgG at 1/8000 dilution;  
 Exposure time: 1 second



# Product Description

Pioneering GTPase and Oncogene Product Development since 2010

---