

NDUFB11 RABBIT PAB

货号: S211803

产品全名: NDUFB11 兔多抗

基因符号: ESSS; Np15; P17.3; NP17.3; CI-ESSS; LSDMCA3

UNIPROT ID: Q9NX14 (Gene Accession - BC010665)

背景: Complex I (also known as NADH dehydrogenase) of the electron transport chain (respiratory chain) is an enzymatic complex that catalyzes the transfer of electrons from NADH to ubiquinone. Free energy from the reaction is conserved in the transfer of protons into the intermembrane space to create an electrochemical proton gradient, a driving force for ATP synthesis. Complex I is a complicated, multi-protein, L-shaped complex composed of at least 45 different subunits and located in the mitochondrial inner membrane. NDUFB11 (NADH dehydrogenase (ubiquinone) 1 beta subcomplex subunit 11), also known as ESSS, Np15, Np17.3 (neuronal protein 17.3) or p17.3, is a hydrophobic transmembrane protein belonging to the Complex I NDUFB11 subunit family. Ubiquitously expressed, NDUFB11 localizes to the inner membrane of the mitochondrion and functions as an accessory subunit of Complex I. The cAMP-dependent phosphorylation of NDUFB11 is important for the regulation of Complex I activity.

抗原: Full length fusion 蛋白

经过测试的应用: ELISA, WB, IHC

推荐稀释比: IHC: 50-300;WB: 1000-5000;ELISA: 5000-10000

种属反应性: Rabbit

克隆性: Rabbit Polyclonal

亚型: Immunogen-specific rabbit IgG

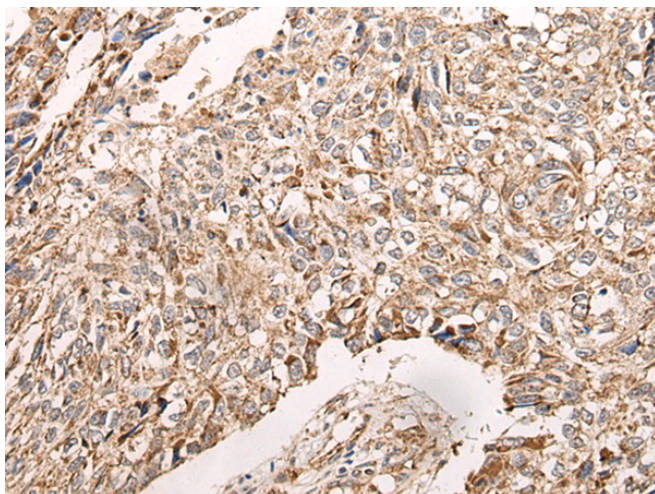
纯化: Antigen affinity purification

种属反应性: Human, Mouse

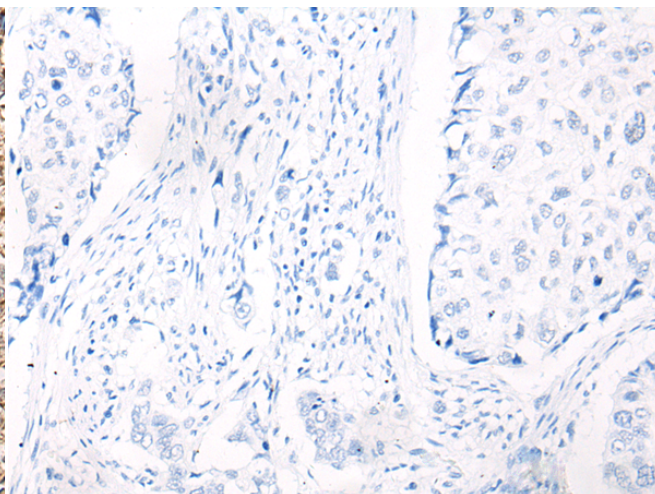
成分: PBS (without Mg²⁺ and Ca²⁺), pH 7.4, 150 mM NaCl, 0.05% Sodium Azide and 40% glycerol

研究领域: Metabolism, Cancer

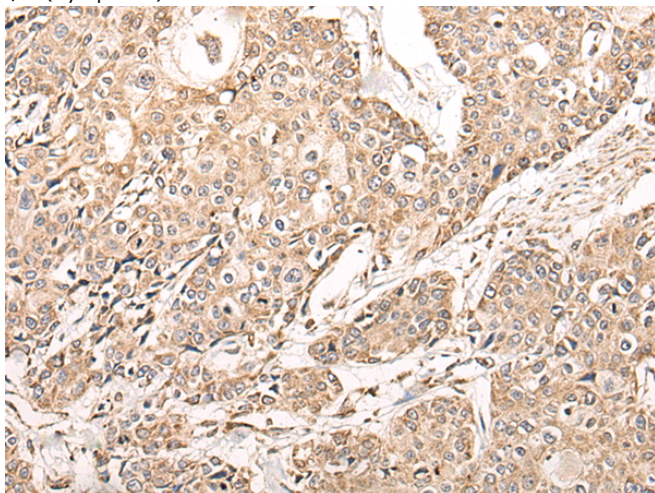
储存和运输: Store at -20°C. Avoid repeated freezing and thawing



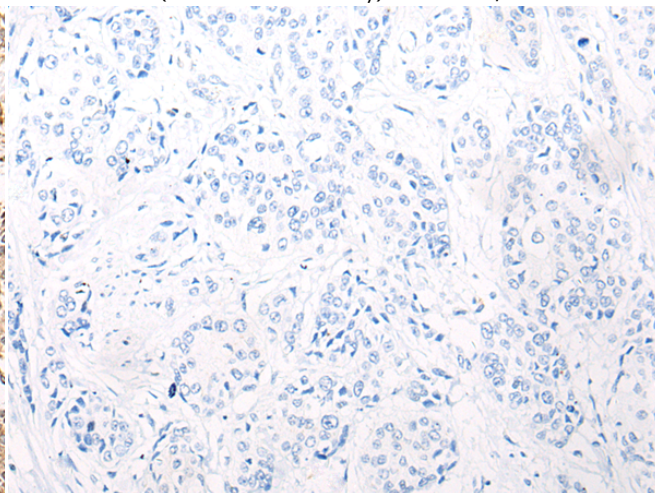
Immunohistochemistry analysis of paraffin embedded Human lung cancer tissue using 211803(NDUFB11 Antibody) at a dilution of 1/95(Cytoplasm).



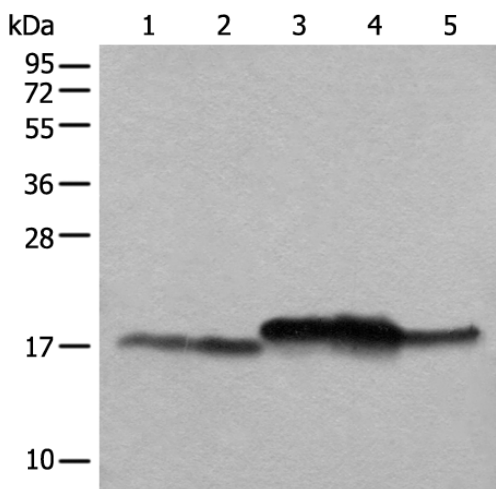
In comparison with the IHC on the left, the same paraffin-embedded Human lung cancer tissue is first treated with the fusion protein and then with 211803(Anti-NDUFB11 Antibody) at dilution 1/95.



The image on the left is immunohistochemistry of paraffin-embedded Human prostate cancer tissue using 211803(Anti-NDUFB11 Antibody) at a dilution of 1/95.



In comparison with the IHC on the left, the same paraffin-embedded Human prostate cancer tissue is first treated with fusion protein and then with D123630(Anti-NDUFB11 Antibody) at dilution 1/95.



Gel: 12%SDS-PAGE, Lysate: 40 µg;
 Lane 1-5: Mouse brain tissue, Mouse liver tissue, 231 cell, K562 cell, A431 cell lysates;
 Primary antibody: 211803(NDUFB11 Antibody) at dilution 1/1000;
 Secondary antibody: Goat anti rabbit IgG at 1/8000 dilution;
 Exposure time: 10 seconds



Product Description

Pioneering GTPase and Oncogene Product Development since 2010
