

NDUFB10 RABBIT PAB

货号: S218058

产品全名: NDUFB10 兔多抗

基因符号: PDSW

UNIPROT ID: O96000 (Gene Accession - BC007509)

背景: NADH dehydrogenase [ubiquinone] 1 beta subcomplex subunit 10 is an enzyme that in humans is encoded by the NDUFB10 gene. NADH dehydrogenase (ubiquinone) 1 beta subcomplex subunit 10 is an accessory subunit of the NADH dehydrogenase (ubiquinone) complex, located in the mitochondrial inner membrane. It is also known as Complex I and is the largest of the five complexes of the electron transport chain.

抗原: Full length fusion 蛋白

经过测试的应用: ELISA, WB, IHC

推荐稀释比: IHC: 25-100; WB: 500-2000; ELISA: 5000-10000

种属反应性: Rabbit

克隆性: Rabbit Polyclonal

亚型: Immunogen-specific rabbit IgG

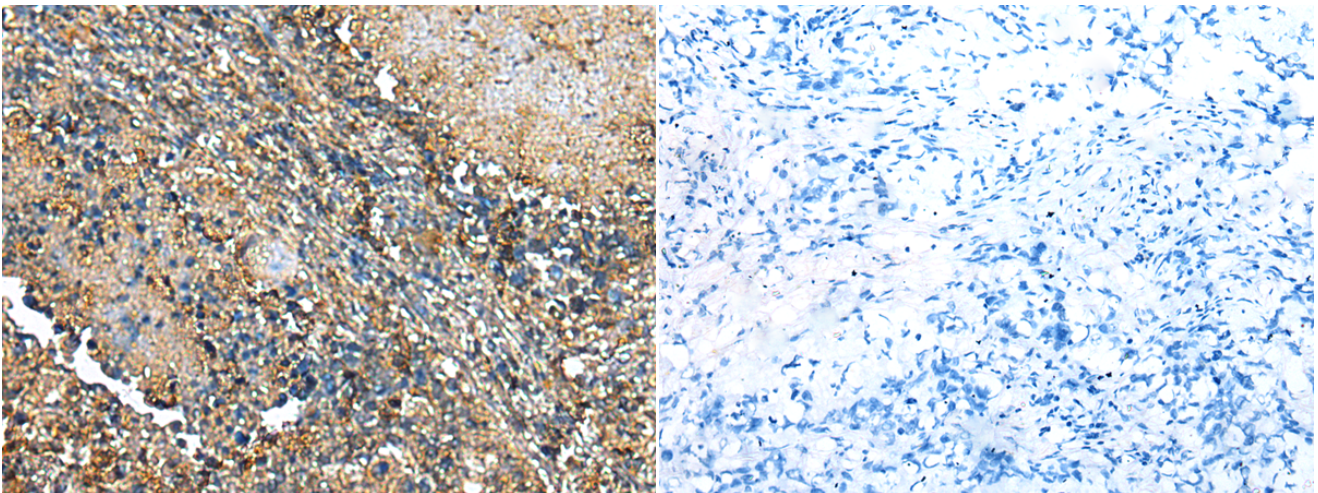
纯化: Antigen affinity purification

种属反应性: Human

成分: PBS (without Mg²⁺ and Ca²⁺), pH 7.4, 150 mM NaCl, 0.05% Sodium Azide and 40% glycerol

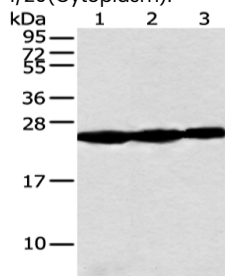
研究领域: Metabolism, Cancer

储存和运输: Store at -20°C. Avoid repeated freezing and thawing



Immunohistochemistry analysis of paraffin embedded Human lung cancer tissue using 218058(NDUFB10 Antibody) at a dilution of 1/20(Cytoplasm).

In comparison with the IHC on the left, the same paraffin-embedded Human lung cancer tissue is first treated with the fusion protein and then with 218058(Anti-NDUFB10 Antibody) at dilution 1/20.



Gel: 12%SDS-PAGE, Lysate: 40 µg;
Lane 1-3: Human fetal muscle tissue, Raji and Jurkat cell;
Primary antibody: 218058(NDUFB10 Antibody) at dilution 1/300;
Secondary antibody: Goat anti rabbit IgG at 1/8000 dilution;
Exposure time: 10 seconds