

NDRG1 RABBIT PAB

货号: S220133

产品全名: NDRG1 兔多抗

基因符号 GC4, RTP, DRG1, NDR1, NMSL, TDD5, CAP43, CMT4D, DRG-1, HMSNL, RIT42, TARG1, PROXY1

UNIPROT ID: Q92597 (Gene Accession - NP_006087)

背景: This gene is a member of the N-myc downregulated gene family which belongs to the alpha/beta hydrolase superfamily. The protein encoded by this gene is a cytoplasmic protein involved in stress responses, hormone responses, cell growth, and differentiation. The encoded protein is necessary for p53-mediated caspase activation and apoptosis. Mutations in this gene are a cause of Charcot-Marie-Tooth disease type 4D, and expression of this gene may be a prognostic indicator for several types of cancer. Alternatively spliced transcript variants encoding multiple isoforms have been observed for this gene.

抗原: Synthetic peptide of human NDRG1

经过测试的应用: ELISA, WB, IHC

推荐稀释比: IHC: 50-200;WB: 500-2000;ELISA: 2000-5000

种属反应性: Rabbit

克隆性: Rabbit Polyclonal

亚型: Immunogen-specific rabbit IgG

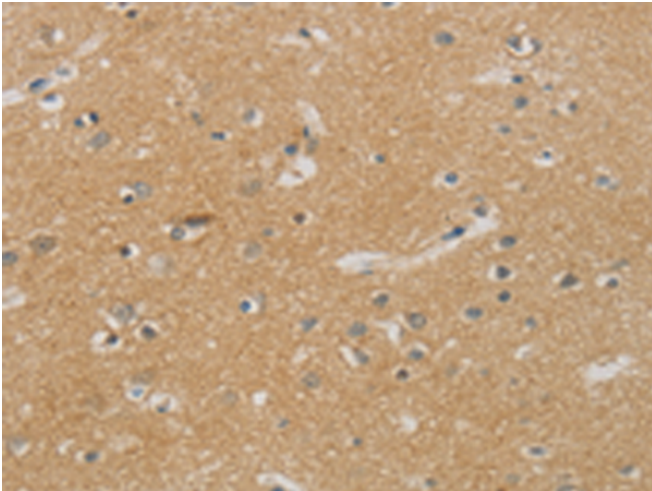
纯化: Antigen affinity purification

种属反应性: Human, Mouse, Rat

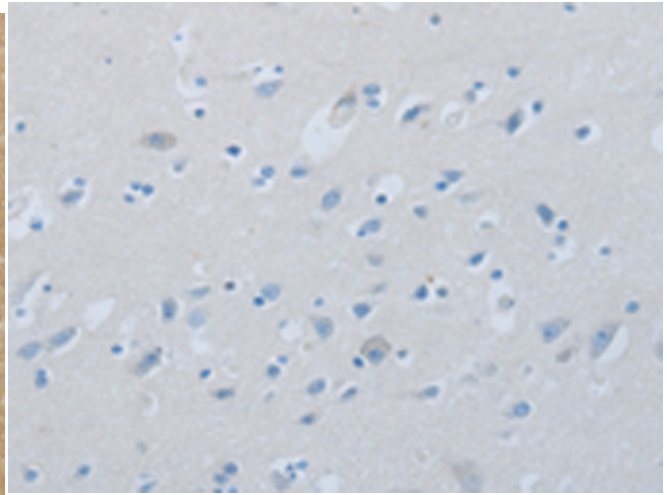
成分: PBS (without Mg²⁺ and Ca²⁺), pH 7.4, 150 mM NaCl, 0.05% Sodium Azide and 40% glycerol

研究领域: Epigenetics and Nuclear Signaling, Cardiovascular, Cancer, Neuroscience

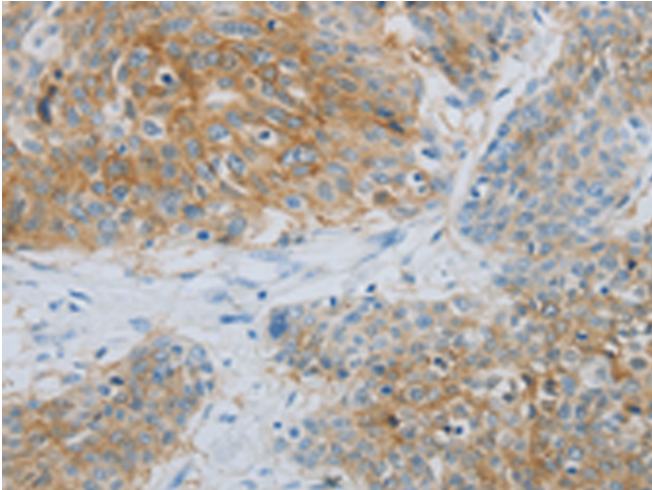
储存和运输: Store at -20°C. Avoid repeated freezing and thawing



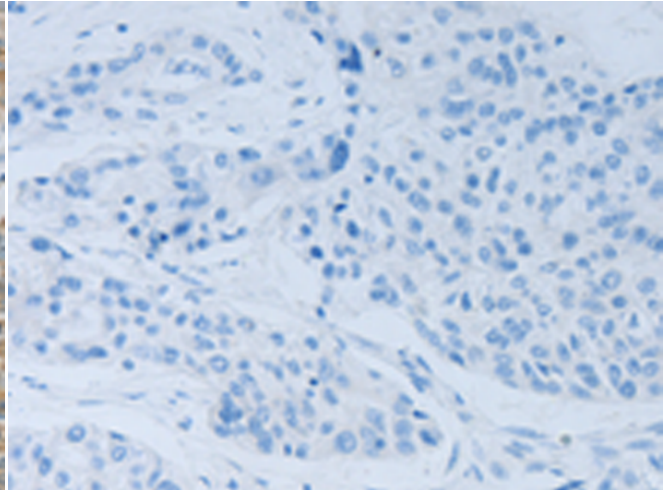
Immunohistochemistry analysis of paraffin embedded Human brain tissue using 220133(NDRG1 Antibody) at a dilution of 1/70(Cytoplasm).



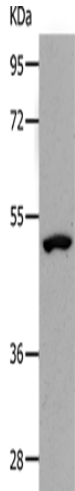
In comparison with the IHC on the left, the same paraffin-embedded Human brain tissue is first treated with the synthetic peptide and then with 220133(Anti-NDRG1 Antibody) at dilution 1/70.



The image on the left is immunohistochemistry of paraffin-embedded Human esophagus cancer tissue using 220133(Anti-NDRG1 Antibody) at a dilution of 1/70.



In comparison with the IHC on the left, the same paraffin-embedded Human esophagus cancer tissue is first treated with synthetic peptide and then with D261013(Anti-NDRG1 Antibody) at dilution 1/70.



Gel: 10%SDS-PAGE, Lysate: 40 µg;
Lane: Human lymphoma tissue;
Primary antibody: 220133(NDRG1 Antibody) at dilution 1/1000;
Secondary antibody: Goat anti rabbit IgG at 1/8000 dilution;
Exposure time: 10 minutes



Product Description

Pioneering GTPase and Oncogene Product Development since 2010
