

NCR1 RABBIT PAB

货号: S220435

产品全名: NCR1 兔多抗

基因符号 LY94; CD335; NKP46; NK-p46

UNIPROT ID: O76036 (Gene Accession - NP_001138929)

背景: Natural killer (NK) cells mediate MHC nonrestricted cytotoxicity. There are many candidate molecules for NK cell recognition structures, including inhibiting and activating receptors. Using a monoclonal antibody capable of triggering NK-mediated lysis, Sivori et al. (1997) identified a cell surface molecule of 46 kD that they termed p46. The molecule lacks N-linked sugars and is expressed on resting and activated NK cells but not on T cells or B cells. In addition to lytic activity, monoclonal antibody-mediated crosslinking induces intracellular calcium increases and cytokine production.

抗原: Synthetic peptide of human NCR1

经过测试的应用: ELISA, WB, IHC

推荐稀释比: IHC: 50-100;WB: 500-2000;ELISA: 5000-10000

种属反应性: Rabbit

克隆性: Rabbit Polyclonal

亚型: Immunogen-specific rabbit IgG

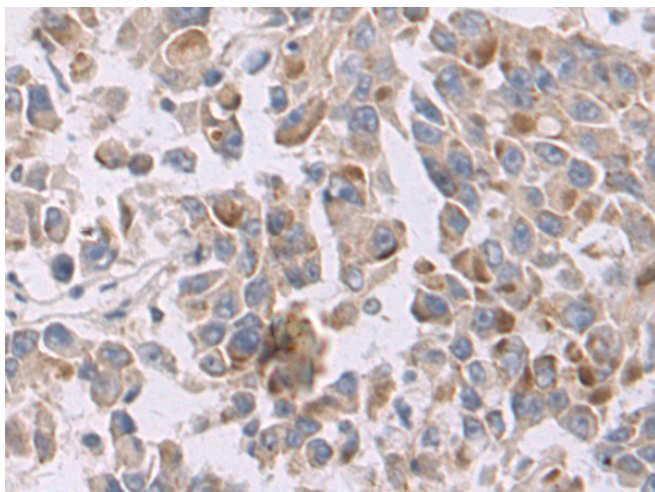
纯化: Antigen affinity purification

种属反应性: Human, Mouse

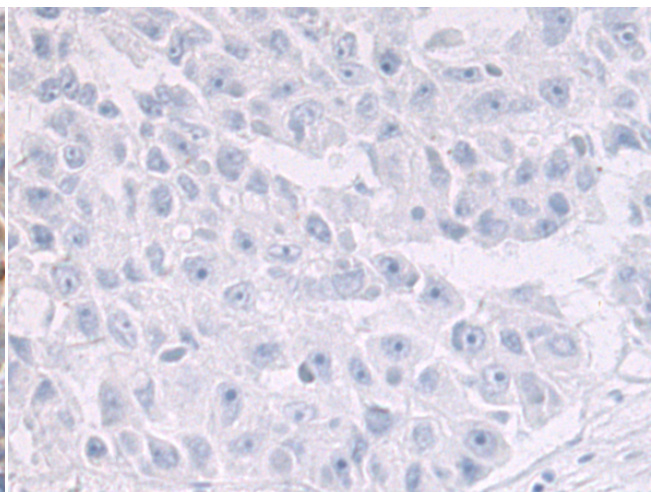
成分: PBS (without Mg²⁺ and Ca²⁺), pH 7.4, 150 mM NaCl, 0.05% Sodium Azide and 40% glycerol

研究领域: Signal Transduction, Immunology

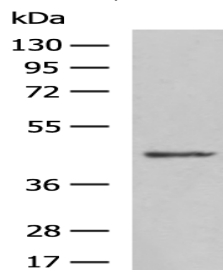
储存和运输: Store at -20°C. Avoid repeated freezing and thawing



Immunohistochemistry analysis of paraffin embedded Human liver cancer tissue using 220435(NCR1 Antibody) at a dilution of 1/50(Cell membrane).



In comparison with the IHC on the left, the same paraffin-embedded Human liver cancer tissue is first treated with the synthetic peptide and then with 220435(Anti-NCR1 Antibody) at dilution 1/50.



Gel: 8%SDS-PAGE, Lysate: 40 µg;

Lane: Mouse lung tissue lysate;

Primary antibody: 220435(NCR1 Antibody) at dilution 1/800;

Secondary antibody: HRP-conjugated Goat anti rabbit IgG at 1/5000 dilution;

Exposure time: 3 minutes