

NCL RABBIT PAB

货号: S219483

产品全名: NCL 兔多抗

基因符号: C23; Nsr1

UNIPROT ID: P19338 (Gene Accession - BC002343)

背景: Nucleolin (NCL), a eukaryotic nucleolar phosphoprotein, is involved in the synthesis and maturation of ribosomes. It is located mainly in dense fibrillar regions of the nucleolus. Human NCL gene consists of 14 exons with 13 introns and spans approximately 11kb. The intron 11 of the NCL gene encodes a small nucleolar RNA, termed U20.

抗原: Fusion protein of human NCL

经过测试的应用: ELISA, IHC

推荐稀释比: IHC: 100-300; ELISA: 5000-10000

种属反应性: Rabbit

克隆性: Rabbit Polyclonal

亚型: Immunogen-specific rabbit IgG

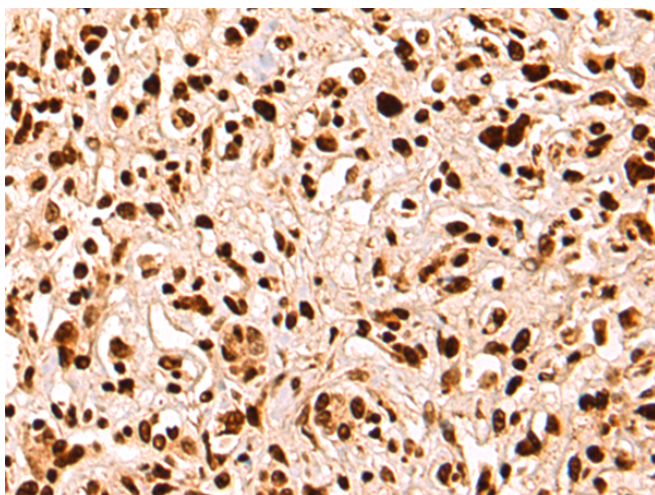
纯化: Antigen affinity purification

种属反应性: Human, Mouse, Rat

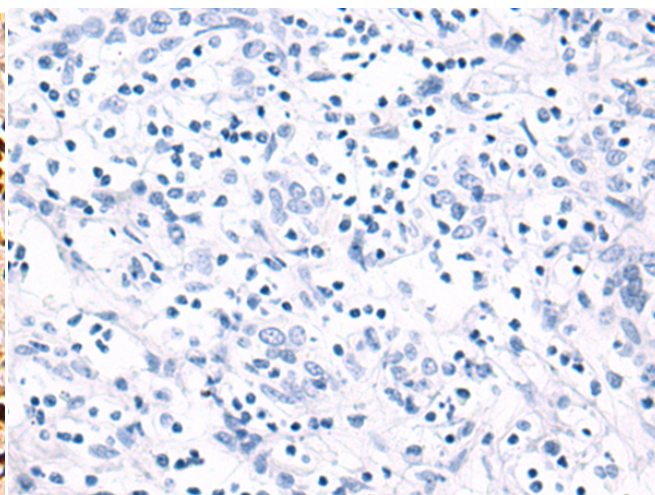
成分: PBS (without Mg²⁺ and Ca²⁺), pH 7.4, 150 mM NaCl, 0.05% Sodium Azide and 40% glycerol

研究领域: Epigenetics and Nuclear Signaling

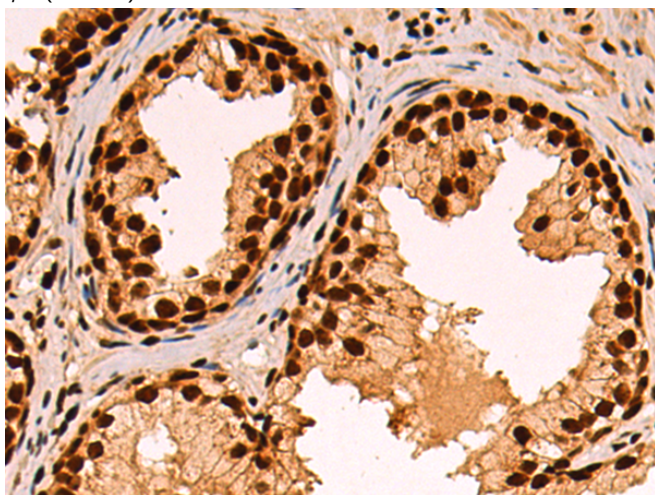
储存和运输: Store at -20°C. Avoid repeated freezing and thawing



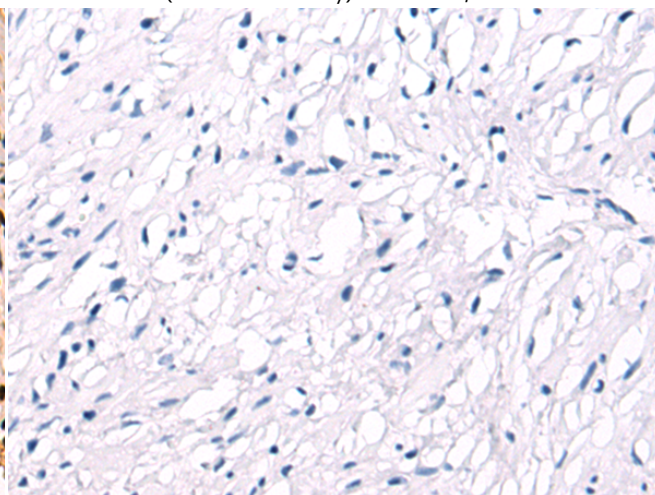
Immunohistochemistry analysis of paraffin embedded Human liver cancer tissue using 219483(NCL Antibody) at a dilution of 1/85(Nucleus).



In comparison with the IHC on the left, the same paraffin-embedded Human liver cancer tissue is first treated with the fusion protein and then with 219483(Anti-NCL Antibody) at dilution 1/85.



The image on the left is immunohistochemistry of paraffin-embedded Human prostate cancer tissue using 219483(Anti-NCL Antibody) at a dilution of 1/85.



In comparison with the IHC on the left, the same paraffin-embedded Human prostate cancer tissue is first treated with fusion protein and then with D227319(Anti-NCL Antibody) at dilution 1/85.



Product Description

Pioneering GTPase and Oncogene Product Development since 2010
