

## NCAPG2 RABBIT PAB

货号: N225499

产品全名: NCAPG2 兔多抗

基因符号 MTB; CAPG2; LUZP5; CAP-G2; hCAP-G2

**UNIPROT ID:** Q86X12

**背景:** Regulatory subunit of the condensin-2 complex, a complex which establishes mitotic chromosome architecture and is involved in physical rigidity of the chromatid axis.

**抗原:** The antiserum was produced against synthesized peptide derived from human NCAPG2. AA range:561-610

**经过测试的应用:** IHC-P,ELISA

**推荐稀释比:** IHC: 1/50-1/100 ELISA: 1/10000

**种属反应性:** Rabbit

**克隆性:** Rabbit Polyclonal

**分子量:** -

**亚型:** IgG

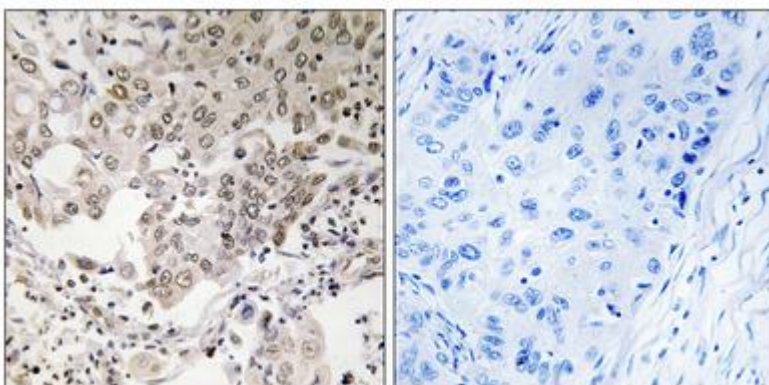
**纯化:** Affinity Chromatography

**种属反应性:** Human

**成分:** PBS (without Mg<sup>2+</sup> and Ca<sup>2+</sup>), pH 7.3 containing 50% glycerol, 0.5% BSA and 0.02% sodium azide

**研究领域:** Cell Biology

**储存和运输:** Store at -20°C. Avoid repeated freezing and thawing



Immunohistochemistry analysis of paraffin-embedded Human lung carcinoma, using NCAPG2 antibody. High-pressure and temperature Sodium Citrate pH 6.0 was used for antigen retrieval. Sample with blocking peptide on the right.



# Product Description

Pioneering GTPase and Oncogene Product Development since 2010

---