

NCAPD2 RABBIT PAB

货号: S217236

产品全名: NCAPD2 兔多抗

基因符号: CNAP1; CAP-D2; MCPH21; hCAP-D2

UNIPROT ID: Q15021 (Gene Accession - BC028182)

背景: Enables histone binding activity. Involved in mitotic chromosome condensation. Located in condensed chromosome; cytosol; and nucleoplasm. Part of condensin complex. Colocalizes with cytoplasm and nuclear chromosome. Implicated in primary autosomal recessive microcephaly.

抗原: Fusion protein of human NCAPD2

经过测试的应用: ELISA, WB, IHC

推荐稀释比: IHC: 50-200;WB: 1000-5000;ELISA: 5000-10000

种属反应性: Rabbit

克隆性: Rabbit Polyclonal

亚型: Immunogen-specific rabbit IgG

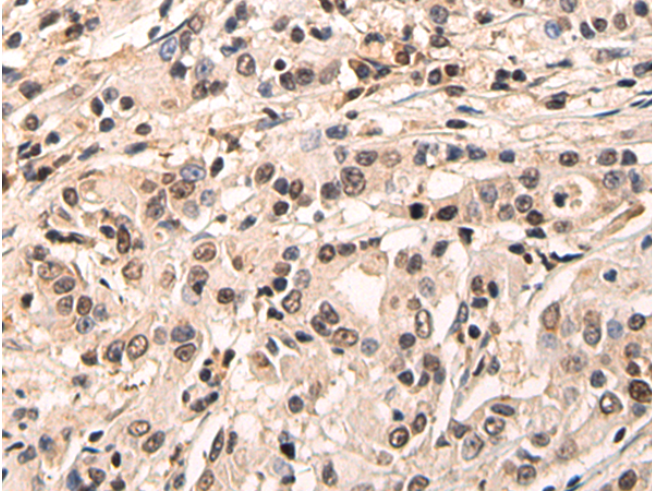
纯化: Antigen affinity purification

种属反应性: Human, Mouse

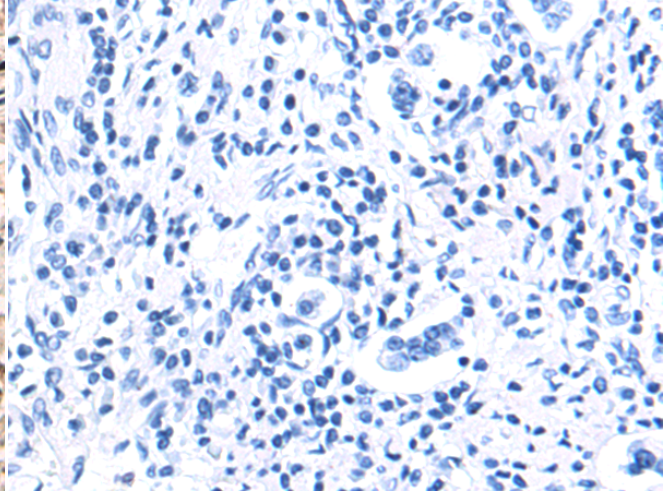
成分: PBS (without Mg²⁺ and Ca²⁺), pH 7.4, 150 mM NaCl, 0.05% Sodium Azide and 40% glycerol

研究领域: Epigenetics and Nuclear Signaling, Cancer

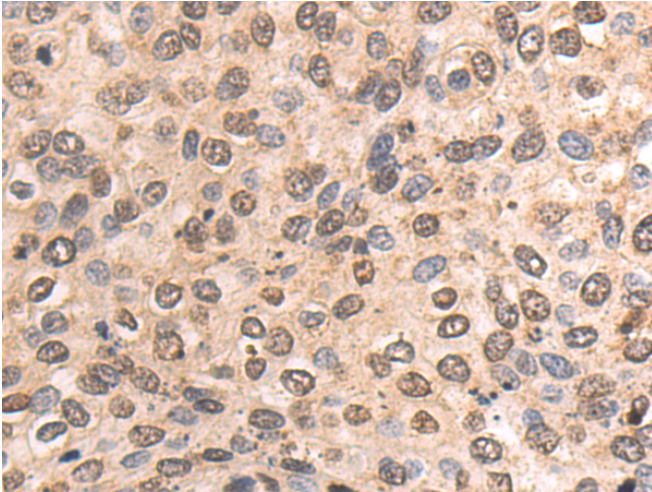
储存和运输: Store at -20°C. Avoid repeated freezing and thawing



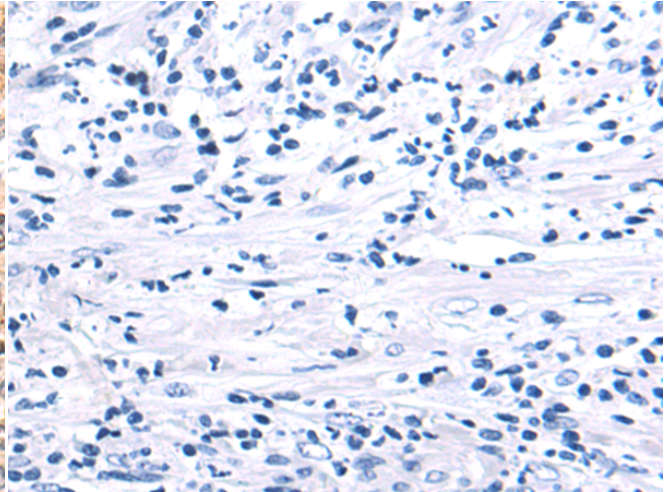
Immunohistochemistry analysis of paraffin embedded Human gastric cancer tissue using 217236(NCAPD2 Antibody) at a dilution of 1/55(Cytoplasm and Nucleus).



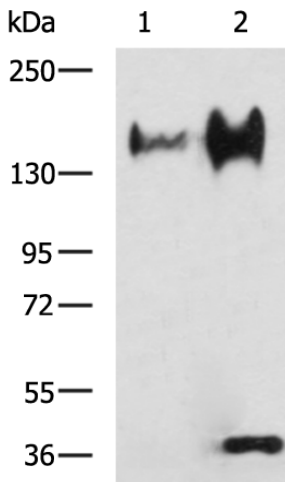
In comparison with the IHC on the left, the same paraffin-embedded Human gastric cancer tissue is first treated with the fusion protein and then with 217236(Anti-NCAPD2 Antibody) at dilution 1/55.



The image on the left is immunohistochemistry of paraffin-embedded Human cervical cancer tissue using 217236(Anti-NCAPD2 Antibody) at a dilution of 1/55.



In comparison with the IHC on the left, the same paraffin-embedded Human cervical cancer tissue is first treated with fusion protein and then with D222023(Anti-NCAPD2 Antibody) at dilution 1/55.



Gel: 6%SDS-PAGE, Lysate: 40 µg;
Lane 1-2: 293T and U251 cell lysates;
Primary antibody: 217236(NCAPD2 Antibody) at dilution 1/800;
Secondary antibody: HRP-conjugated Goat anti rabbit IgG at 1/5000 dilution;
Exposure time: 30 seconds



Product Description

Pioneering GTPase and Oncogene Product Development since 2010
