

## NAV2 RABBIT PAB

货号: S219543

产品全名: NAV2 兔多抗

基因符号: HELAD1; RAINB1; POMFIL2; UNC53H2; STEERIN2

**UNIPROT ID:** Q8IVL1 (Gene Accession - BC016054)

**背景:** This gene encodes a member of the neuron navigator gene family, which may play a role in cellular growth and migration. Multiple transcript variants encoding different isoforms have been found for this gene.

**抗原:** Fusion protein of human NAV2

**经过测试的应用:** ELISA, IHC

**推荐稀释比:** IHC: 50-200; ELISA: 5000-10000

**种属反应性:** Rabbit

**克隆性:** Rabbit Polyclonal

**亚型:** Immunogen-specific rabbit IgG

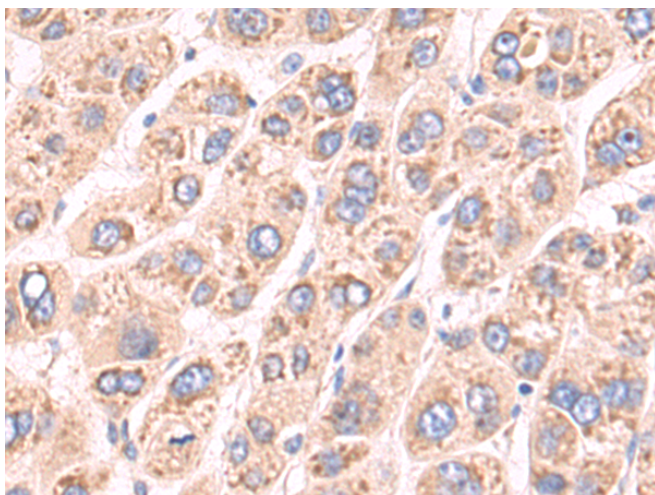
**纯化:** Antigen affinity purification

**种属反应性:** Human

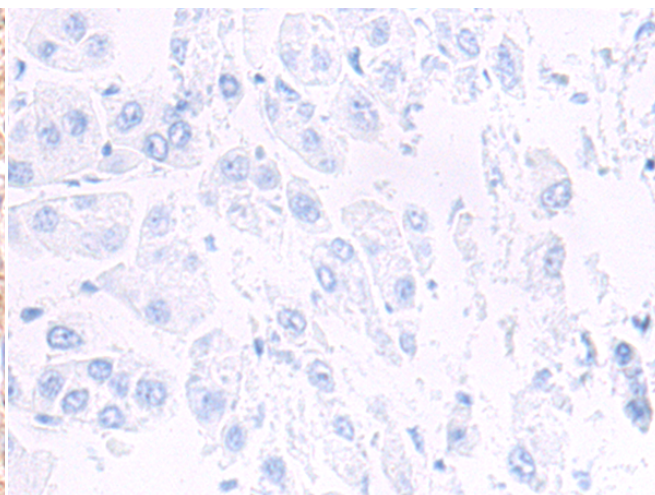
**成分:** PBS (without Mg<sup>2+</sup> and Ca<sup>2+</sup>), pH 7.4, 150 mM NaCl, 0.05% Sodium Azide and 40% glycerol

**研究领域:** Neuroscience

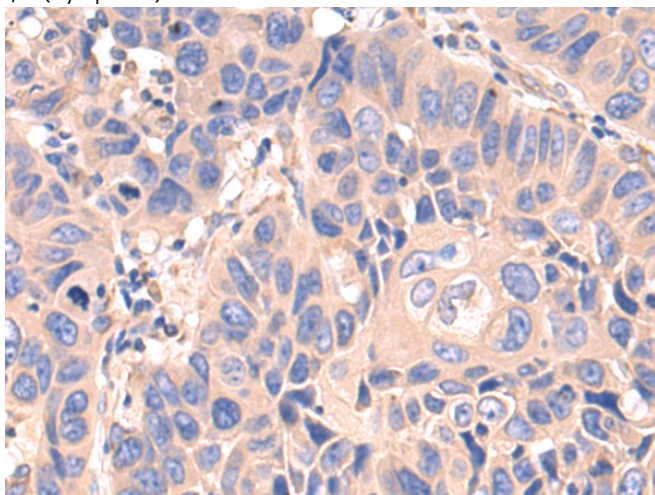
**储存和运输:** Store at -20°C. Avoid repeated freezing and thawing



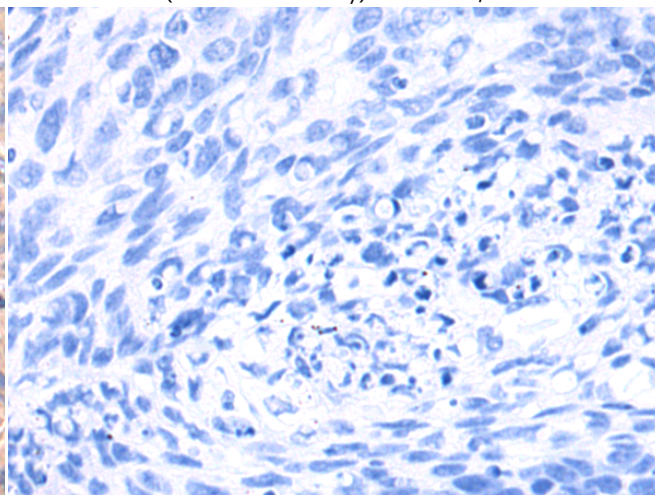
Immunohistochemistry analysis of paraffin embedded Human liver cancer tissue using 219543(NAV2 Antibody) at a dilution of 1/70(Cytoplasm).



In comparison with the IHC on the left, the same paraffin-embedded Human liver cancer tissue is first treated with the fusion protein and then with 219543(Anti-NAV2 Antibody) at dilution 1/70.



The image on the left is immunohistochemistry of paraffin-embedded Human lung cancer tissue using 219543(Anti-NAV2 Antibody) at a dilution of 1/70.



In comparison with the IHC on the left, the same paraffin-embedded Human lung cancer tissue is first treated with fusion protein and then with D227614(Anti-NAV2 Antibody) at dilution 1/70.



# Product Description

Pioneering GTPase and Oncogene Product Development since 2010

---