

NAIF1 RABBIT PAB

货号: S216670

产品全名: NAIF1 兔多抗

基因符号: C9orf90; bA379C10.2

UNIPROT ID: Q69YI7 (Gene Accession - BC021580)

背景: 人 NAIF1 位于染色体 9q34.11 并编码 327 个氨基酸，具有 homeodomain-like 区域和两个核定位信号。NAIF1 在多种物种中保守，包括人类、小鼠、食蟹猕猴、狗、鸡和青蛙，且与任何已知基因或蛋白质没有明显的同源性。NAIF1 主要定位于细胞核。NAIF1 过表达抑制细胞生长并诱导凋亡。此外，NAIF1 转染导致线粒体膜电位和 caspase-3 活性降低。总之，NAIF1 是一种核蛋白，过表达时诱导凋亡。

抗原: 融合蛋白 of human NAIF1

经过测试的应用: ELISA, WB, IHC

推荐稀释比: IHC: 100-200; WB: 1000-5000; ELISA: 5000-10000

种属反应性: Rabbit

克隆性: Rabbit Polyclonal

亚型: Immunogen-specific rabbit IgG

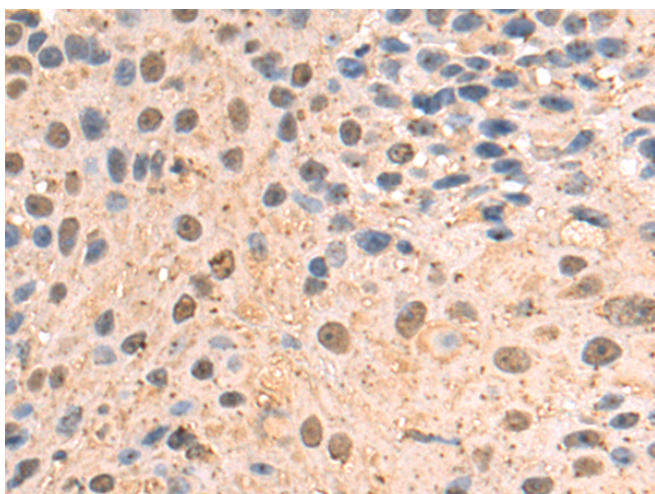
纯化: Antigen affinity purification

种属反应性: Human, Mouse

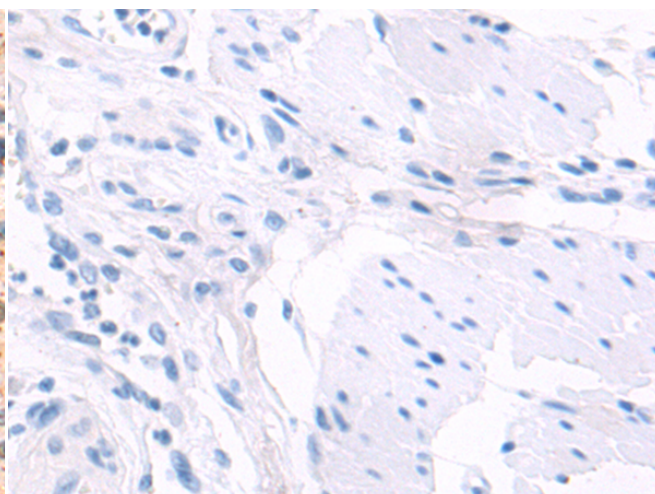
成分: PBS (without Mg²⁺ and Ca²⁺), pH 7.4, 150 mM NaCl, 0.05% Sodium Azide and 40% glycerol

研究领域: Epigenetics and Nuclear Signaling, Cancer

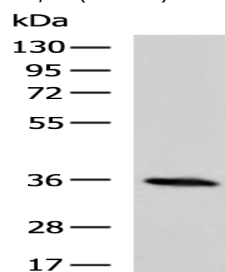
储存和运输: Store at -20°C. Avoid repeated freezing and thawing



Immunohistochemistry analysis of paraffin embedded Human esophagus cancer tissue using 216670 (NAIF1 Antibody) at a dilution of 1/100 (Nucleus).



In comparison with the IHC on the left, the same paraffin-embedded Human esophagus cancer tissue is first treated with the fusion protein and then with 216670 (Anti-NAIF1 Antibody) at dilution 1/100.



Gel: 8% SDS-PAGE, Lysate: 40 µg;

Lane: C2C12 cell lysate;

Primary antibody: 216670 (NAIF1 Antibody) at dilution 1/1000;

Secondary antibody: HRP-conjugated Goat anti rabbit IgG at 1/5000 dilution;

Exposure time: 10 seconds