

NABP1 RABBIT PAB

货号: S219255

产品全名: NABP1 兔多抗

基因符号: SSB2; OBFC2A; SOSS-B2

UNIPROT ID: Q96AH0 (Gene Accession - BC017114)

背景: Single-stranded DNA (ssDNA)-binding proteins, such as OBFC2A, are ubiquitous and essential for a variety of DNA metabolic processes, including replication, recombination, and detection and repair of damage (Richard et al., 2008 [PubMed 18449195]).

抗原: Fusion protein of human NABP1

经过测试的应用: ELISA, WB, IHC

推荐稀释比: IHC: 50-200; WB: 500-2000; ELISA: 5000-10000

种属反应性: Rabbit

克隆性: Rabbit Polyclonal

亚型: Immunogen-specific rabbit IgG

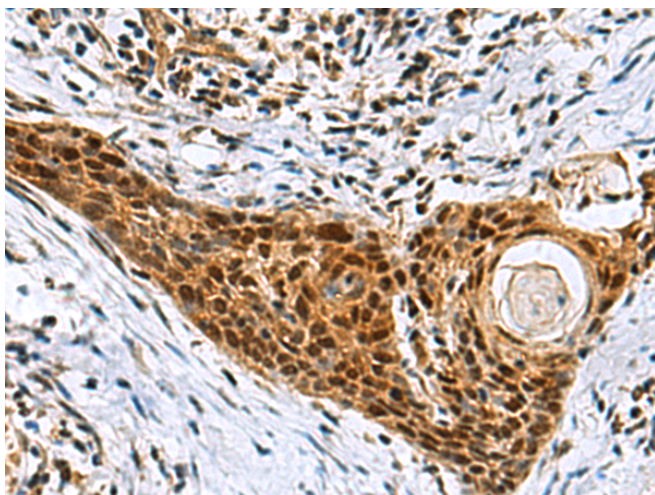
纯化: Antigen affinity purification

种属反应性: Human, Mouse, Rat

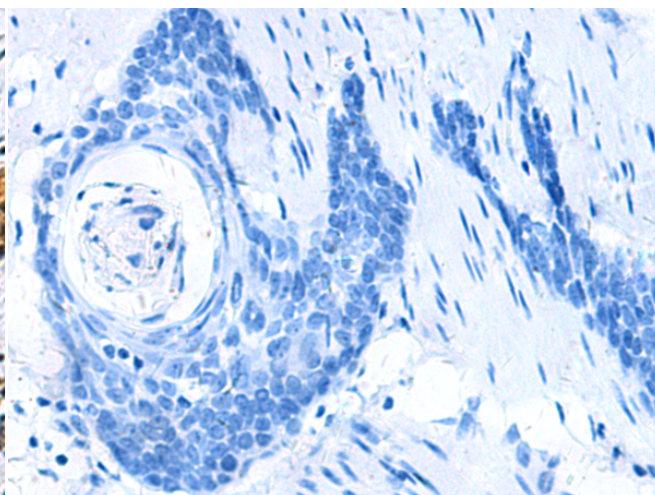
成分: PBS (without Mg²⁺ and Ca²⁺), pH 7.4, 150 mM NaCl, 0.05% Sodium Azide and 40% glycerol

研究领域: Epigenetics and Nuclear Signaling

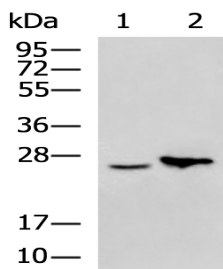
储存和运输: Store at -20°C. Avoid repeated freezing and thawing



Immunohistochemistry analysis of paraffin embedded Human esophagus cancer tissue using 219255 (NABP1 Antibody) at a dilution of 1/80 (Nucleus).



In comparison with the IHC on the left, the same paraffin-embedded Human esophagus cancer tissue is first treated with the fusion protein and then with 219255 (Anti-NABP1 Antibody) at dilution 1/80.



Gel: 12% SDS-PAGE, Lysate: 40 µg;

Lane 1-2: Jurkat cell, Mouse liver tissue lysates;

Primary antibody: 219255 (NABP1 Antibody) at dilution 1/500;

Secondary antibody: HRP-conjugated Goat anti rabbit IgG at 1/5000 dilution;

Exposure time: 5 minutes