

## MYOSIN PHOSPHATASE RABBIT PAB

货号: N225373

产品全名: Myosin Phosphatase 兔多抗

基因符号 PPP1R12A; MBS; MYPT1; Protein phosphatase 1 regulatory subunit 12A; Myosin phosphatase-targeting subunit 1; Myosin phosphatase target subunit 1; Protein phosphatase myosin-binding subunit

**UNIPROT ID:** O14974

背景: Key regulator of protein phosphatase 1C (PPP1C). Mediates binding to myosin. As part of the PPP1C complex, involved in dephosphorylation of PLK1. Capable of inhibiting HIF1A-dependent suppression of HIF1A activity.

抗原: The antiserum was produced against synthesized peptide derived from human MYPT1. AA range:661-710

经过测试的应用: WB,IHC-P,ELISA

推荐稀释比: WB: 1/500-1/1000 IHC: 1/50-1/100 ELISA: 1/10000

种属反应性: Rabbit

克隆性: Rabbit Polyclonal

分子量: Calculated MW: 115 kDa; Observed MW: 140 kDa

亚型: IgG

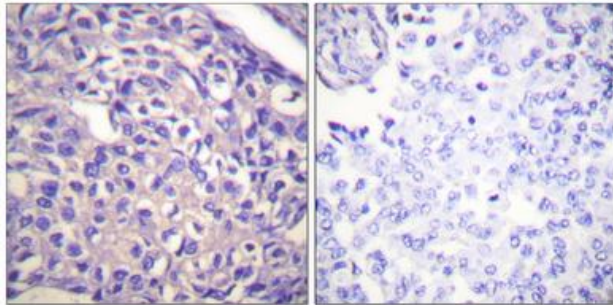
纯化: Affinity Chromatography

种属反应性: Human, Mouse and Rat,Monkey

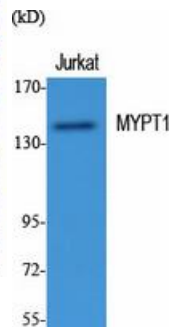
成分: PBS (without Mg<sup>2+</sup> and Ca<sup>2+</sup>), pH 7.3 containing 50% glycerol, 0.5% BSA and 0.02% sodium azide

研究领域: Signal Transduction

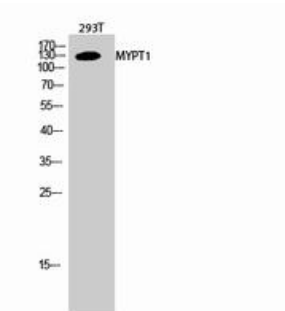
储存和运输: Store at -20°C. Avoid repeated freezing and thawing



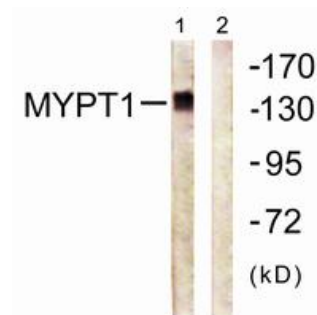
Immunohistochemistry analysis of paraffin-embedded Human breast carcinoma tissue using MYPT1 antibody. High-pressure and temperature Sodium Citrate pH 6.0 was used for antigen retrieval. Sample with blocking peptide on the right.



Western blot analysis of Myosin Phosphatase in various lysates using Myosin Phosphatase antibody.



Western blot analysis of Myosin Phosphatase in 293T lysates using MYPT1 antibody.



Western blot analysis of Myosin Phosphatase in COS7 lysates using Myosin Phosphatase antibody. The lane on the right is blocked with the synthesized peptide.