

MYOMESIN 2 RABBIT PAB

货号: N225458

产品全名: Myomesin 2 兔多抗

基因符号 TTNAP

UNIPROT ID: P54296

背景: Major component of the vertebrate myofibrillar M band. Binds myosin, titin, and light meromyosin. This binding is dose dependent.

抗原: The antiserum was produced against synthesized peptide derived from human MYOM2. AA range:612-661

经过测试的应用: WB,ELISA

推荐稀释比: WB: 1/500-1/1000 ELISA: 1/10000

种属反应性: Rabbit

克隆性: Rabbit Polyclonal

分子量: Calculated MW: 165 kDa; Observed MW: 165 kDa

亚型: IgG

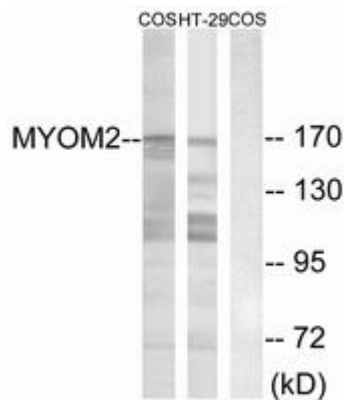
纯化: Affinity Chromatography

种属反应性: Human,Mouse,Monkey

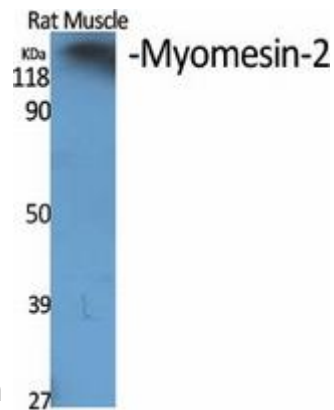
成分: PBS (without Mg²⁺ and Ca²⁺), pH 7.3 containing 50% glycerol, 0.5% BSA and 0.02% sodium azide

研究领域: Signal Transduction

储存和运输: Store at -20°C. Avoid repeated freezing and thawing



Western blot analysis of Myomesin 2 in COS7 and HT-29 lysates using MYOM2 antibody. The lane on the right is blocked with the synthesized peptide.



Western blot analysis of Myomesin 2 in various lysates using Myomesin 2 antibody.



Western blot analysis of Myomesin 2 in HT-29 lysates using Myomesin2 antibody.