

## MYO1B RABBIT MAB

货号: N262565

产品全名: MYO1B 兔单克隆抗体

基因符号 MYH-1c; MMI-alpha; MMIa

**UNIPROT ID:** O43795

背景: Motor protein that may participate in process critical to neuronal development and function such as cell migration, neurite outgrowth and vesicular transport.

抗原: Recombinant protein of human MYO1B

经过测试的应用: WB,IHC-P

推荐稀释比: WB: 1/500-1/1000 IHC: 1/50-1/100

种属反应性: Rabbit

克隆性: Rabbit Monoclonal

克隆编号: R04-6D4

分子量: Calculated MW: 132 kDa; Observed MW: 132 kDa

亚型: IgG

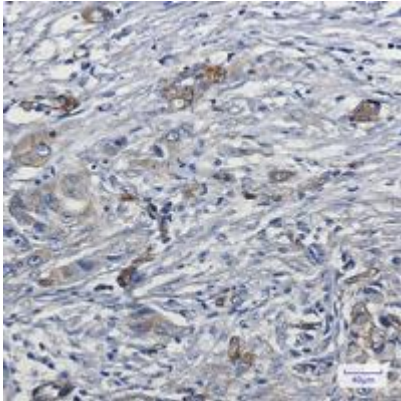
纯化: Affinity Purified

种属反应性: Human, Mouse and Rat

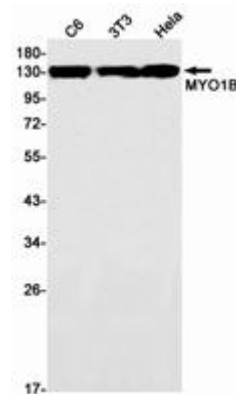
成分: PBS (without Mg<sup>2+</sup> and Ca<sup>2+</sup>), pH 7.3 containing 50% glycerol, 0.5% BSA and 0.02% sodium azide

研究领域: Cell Biology

储存和运输: Store at -20°C. Avoid repeated freezing and thawing



Immunohistochemistry analysis of paraffin-embedded Human lung cancer using MYO1B antibody. High-pressure and temperature Sodium Citrate pH 6.0 was used for antigen retrieval.



Western blot analysis of MYO1B in C6, 3T3, Hela lysates using MYO1B antibody.