

MYLK3 RABBIT PAB

货号: S217123

产品全名: MYLK3 兔多抗

基因符号: MLCK; MLCK2; caMLCK

UNIPROT ID: Q32MK0 (Gene Accession - BC109097)

背景: YLK3 (Myosin light chain kinase 3) is a 795 amino acid cardiac-specific protein that contains one protein kinase domain and belongs to the protein kinase superfamily. Like other MYLK kinases, MYLK3 is thought to play a role in smooth muscle contraction, specifically using magnesium as a cofactor to catalyze the ATP-dependent phosphorylation of Myosin light chain proteins. Additionally, MYLK3 may regulate sarcomere assembly in heart tissue, possibly mediating proper heart function.

抗原: Fusion protein of human MYLK3

经过测试的应用: ELISA, IHC

推荐稀释比: IHC: 25-100; ELISA: 2000-5000

种属反应性: Rabbit

克隆性: Rabbit Polyclonal

亚型: Immunogen-specific rabbit IgG

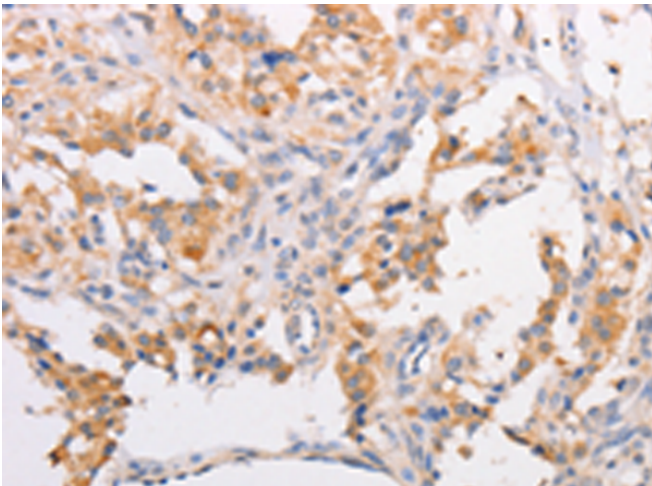
纯化: Antigen affinity purification

种属反应性: Human, Mouse, Rat

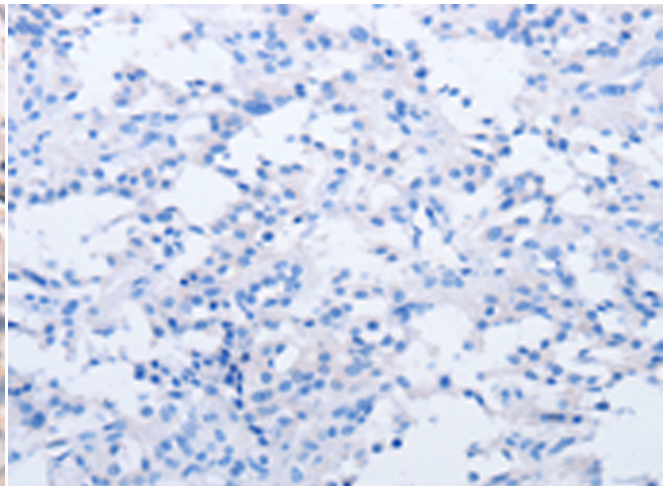
成分: PBS (without Mg²⁺ and Ca²⁺), pH 7.4, 150 mM NaCl, 0.05% Sodium Azide and 40% glycerol

研究领域: Signal Transduction, Cardiovascular

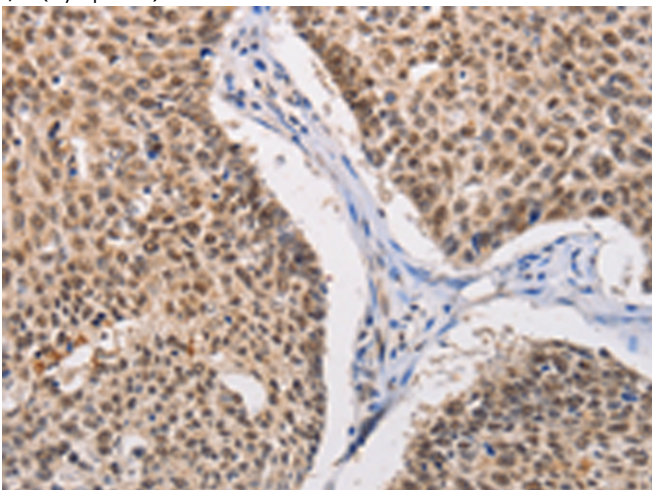
储存和运输: Store at -20°C. Avoid repeated freezing and thawing



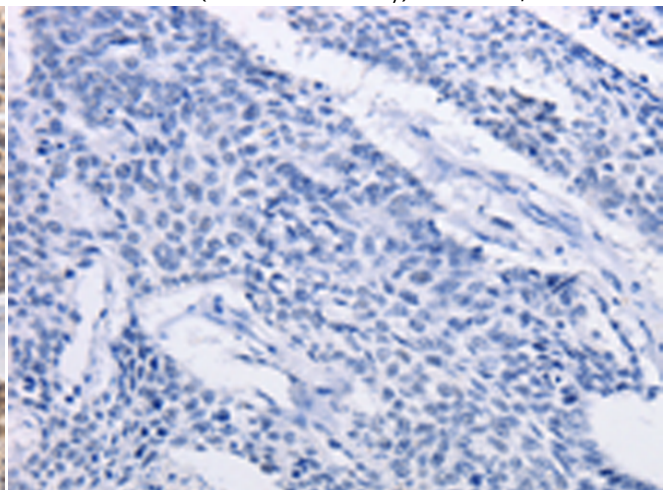
Immunohistochemistry analysis of paraffin embedded Human thyroid cancer tissue using 217123(MYLK3 Antibody) at a dilution of 1/30(Cytoplasm).



In comparison with the IHC on the left, the same paraffin-embedded Human thyroid cancer tissue is first treated with the fusion protein and then with 217123(Anti-MYLK3 Antibody) at dilution 1/30.



The image on the left is immunohistochemistry of paraffin-embedded Human lung cancer tissue using 217123(Anti-MYLK3 Antibody) at a dilution of 1/30.



In comparison with the IHC on the left, the same paraffin-embedded Human lung cancer tissue is first treated with fusion protein and then with D221832(Anti-MYLK3 Antibody) at dilution 1/30.



Product Description

Pioneering GTPase and Oncogene Product Development since 2010
